

ERIC
BOMPARD
PARIS



AUTUMN WINTER — 2023-2024



SUMMARY

P 04	CLOSER LOOK	Director's cut - Carolyn Randolfi
P 05	NEWS	Artisanal collaborations and capsule collection
P 06	INTERVIEW	Memory Box - Lucie Bourdeu
P 07	NEW	The Perfect Gift - Oscar Coop-Phane
P 08	ANECDOTE	New Horizons - Arthur Le Vaillant
P 09	EXPERTISE	Weaving memories - Marie Robert
P 10	FABRIC ARCHIVES	A new look at fibres
P 12	COLLECTION	Into the wild
P 34	INTERVIEW	Ora-ïto plural designer
P 35	NEWS	Know-how and capsule collection
P 36	COLLECTION	An exercise in style
P 58	ARTIST	Perpetual Colorama - JonOne
P 59	RECIPE	Artichoke by Bompard - Julien Sebbag
P 60	COLLECTION	Ensemble
P 82	COLLECTION	Wide perspective
P 100	COLLECTION	A breeze of freedom
P 108	YOUTH	Free Wednesday
P 110	NEWS	Long Life of Cashmere
P 111	LITTLE ONES	Baby Love
P 112	DESTINATION	Where will you take your Bompard?

CONTRIBUTORS

Arthur Le Vaillant - Committed skipper
 JonOne - Artist
 Julien Sebbag - Chef
 Lucie Bourdeu - Actor and Director
 Marie Robert - Philosopher
 Oscar Coop-Phane - Writer
 Ora-ïto - Designer

Editor-in-Chief: Daphné Hézard
 Photographers: Quentin de Briley, Stefano Galuzzi - Jérémy Barniaud, Edouard Pellicci
 Design and artistic direction: Edouard Pellicci - Styling: Marine Chaumien
 Production: La Productrice - Direction: Direct Edition
 Editor: Margault Antonini
 Acknowledgements: Aigle, Converse, Clarks

SLEEVELESS CROPPED ROUND NECK PULLOVER. 100% CASHMERE, 4 PLY. COLOUR: OAT BEIGE. REF. MO3569 - **OFF-GAUGE TRIANGLE.** 100% CASHMERE, 4 PLY. COLOUR: VERMILION. REF. AK485
QUILTED SLEEVELESS JACKET. OUTSIDE: 100% CASHMERE - INSIDE: 85% PIMA COTTON 15% CASHMERE - MIDDLE LAYER: 90% WOOL 10% CASHMERE, 4 EXTRAFINE PLY. COLOUR: CARAMEL BROWN. REF. MO320IN
RIBBED ZIP-NECK PULLOVER. 100% CASHMERE, 4 PLY. COLOUR: OAT BEIGE. REF. MO3596 - **RIBBED LOOSE HAT.** 100% CASHMERE, 10 PLY. COLOUR: METEORITE GREY. REF. AK412
HERRINGBONE DOUBLE-BREADED COAT. 50% YAK 40% WOOL 10% CASHMERE - LINING: 55% POLYESTER 45% VISCOSE. COLOUR: CHALET. REF. MT122
LOOSE TURTLENECK PULLOVER WITH HAMMER SLEEVES. 100% CASHMERE, 2 PLY. COLOUR: OAT BEIGE. REF. MO3565 - **HERRINGBONE PRINT STOLE.** 100% CASHMERE, 2 EXTRAFINE PLY. COLOUR: ROPE. REF. A783
BUTTONED JACKET WITH POCKETS. 90% WOOL 10% CASHMERE. COLOUR: NAVY BLUE. REF. MT124
ZIP-NECK PULLOVER. 100% CASHMERE, 2 PLY. COLOUR: OAT BEIGE. REF. MO1372 - **CLASSIC SCARF.** 100% CASHMERE. COLOUR: OAT BEIGE. REF. A1B

Director's CUT

Eric Bompard's artistic director CULTIVATES a DELICIOUSLY nostalgic approach, but one that is FIRMLY ROOTED in the present day. Here, she shares her memories of KNITWEAR.



How did you become the artistic director of Bompard?
A headhunter contacted me. I met my team, and loved them! It's been three years now!

What exactly did Eric Bompard invent? I'd say he was a pioneer in cashmere, and the first six styles he designed and went on to sell are still part of the collections. They are proof of the brand's timelessness.

What have you brought to the Maison Bompard?
Modernity. I hope to make people dream with my inspiration, and an offering of a complete wardrobe with its own personality and total looks, and at the same time maintaining the fine line between the classic and the zeitgeist.

What are your major memories of knitwear?
Braided leather buttons as a reminder of my childhood in England and Aran jumpers worn by the English as a symbol of authenticity.

What have been your highlights at Bompard?
When I designed the *Absolu* capsule collection with its exceptional undyed cashmere in natural, beige and taupe colours. This capsule has its own DNA with its Aran cables, ribbing and its famous braided leather buttons. Developing new colours, particularly the mixed colours... Such subtle work to create deep, rich colours.

When we introduced the Shetland knit but in cashmere, with patches and offset shoulders... The *Authentiques* - that's what we call them in Maison Bompard. As well as the *Made in France* capsule collection, which is the timeless Bompard of today, a great fashion classic with a twist. Then there was P21's first press presentation. We were a new team, and everyone was so motivated and excited about this new collection. This great energy lives on in the style studio!

Does each piece you create have a specific memory attached to it? The *Made in France* capsule collection and the *Tartan* range are my childhood memories of scratchy, but great-looking shetland jumpers. The jumpers themselves have a memory. Every time you knit a cable, you can't help but think of a fisherman's wife who knitted a cable for her husband.

Does history play an important role in your creations? They represent a lifetime of accumulated knowledge. When you study the stitches, you study their origins - sailors' wives who knitted in the Faroe Islands with yarn inspired by nature, for example.

Where did this idea for a patchwork collection come from? Memories of the world, memories of childhood and artists...

Which artists did you think of when you were creating it? Sonia Delaunay, Charlotte Perriand, the Bauhaus... all these inspirations were on my moodboard. When I took my first trip to Paris, I went to the Musée d'Art Moderne and saw an exhibition on Sonia Delaunay, which was fantastic. But also Dadaism, inspired by Sophie Taeuber-Arp. I really like art nouveau prints. I love Cy Twombly and Japanese art. I'm always going back to the same thing.

What can you remember about the sailor jumper?
All my French cousins had one, but not me!



ARTISANAL WORK

SOIERIES DU MÉKONG

When the creative styling of Maison Eric Bompard joins forces with the ancestral know-how of the weavers of the Soieries du Mékong, the result is a range of unique scarves and stoles featuring colourful check patterns and subtle shades of colour. The brand is also committed to training and employing Cambodian women, thereby helping to open up new career opportunities for them.

TARTAN STOLE. 30% SILK 70% CASHMERE. COLOUR: ZURICH GREEN. REF. A801



COLLABORATIONS

TEAM SPIRIT

Part of the Eric Bompard DNA is being surrounded by the right people, enjoying working together with brands, artists and designers on new capsule collections. These collaborations are both unexpected and inspiring, bringing together different areas of expertise to create collector's items that are very contemporary.

CAPSULE COLLECTION

VERY SCHUSS

The mountains have become the Eric Bompard playground, with a collection of essentials for hitting the slopes in style. The wardrobe includes tailored pieces designed to keep you warm such as a jacket, a trucker jumper and a hooded sweatshirt with discreet stripes, as well as thick jacquard knits that are just perfect for après-ski.

PRODUCTS WORN ON PAGES 72-73





MEMORY box

Lucie Bourdeu LOOKS BACK on her career as an actor and DIRECTOR, and some of her best memories IN FRONT OF and behind the camera.

Where does your passion for cinema come from?

My mother was a theatre costume designer and a huge film buff. That gave me the opportunity early on to become interested in how films were made... And it also translated into something very concrete when I was approached by a casting director at the age of 13 and they liked my screen tests!

You became interested in directing very quickly... When I started filming, I loved the atmosphere and energy on set, and I was soon eyeing up the director's chair. The work attracted me because I wanted to tell stories and share different worlds.

Do you have one outstanding memory? It's hard to choose! I'd have to say the first few times, which often involve pushing yourself to the limit, and the good times spent with the crews and actors I meet on location.

As a director, you work with fashion brands. Where does your attraction to that world come from? Fashion is about a generation, an era; there's a societal side to it that I like. I think it's a special playground where you can convey strong ideas and messages.

What is your relationship with clothing? It's an important part of my personality. I like to dress in a slightly androgynous way because I feel like it gives me strength. I also collect vintage pieces, starting with my 501 jeans, which I associate with discovering the Saint-Ouen flea market.

Can you tell us more about your short film project for Eric Bompard? We're creating a souvenir album for a young woman who, as she leafs through it, realises that Bompard jumpers have been present throughout many stages of her life...

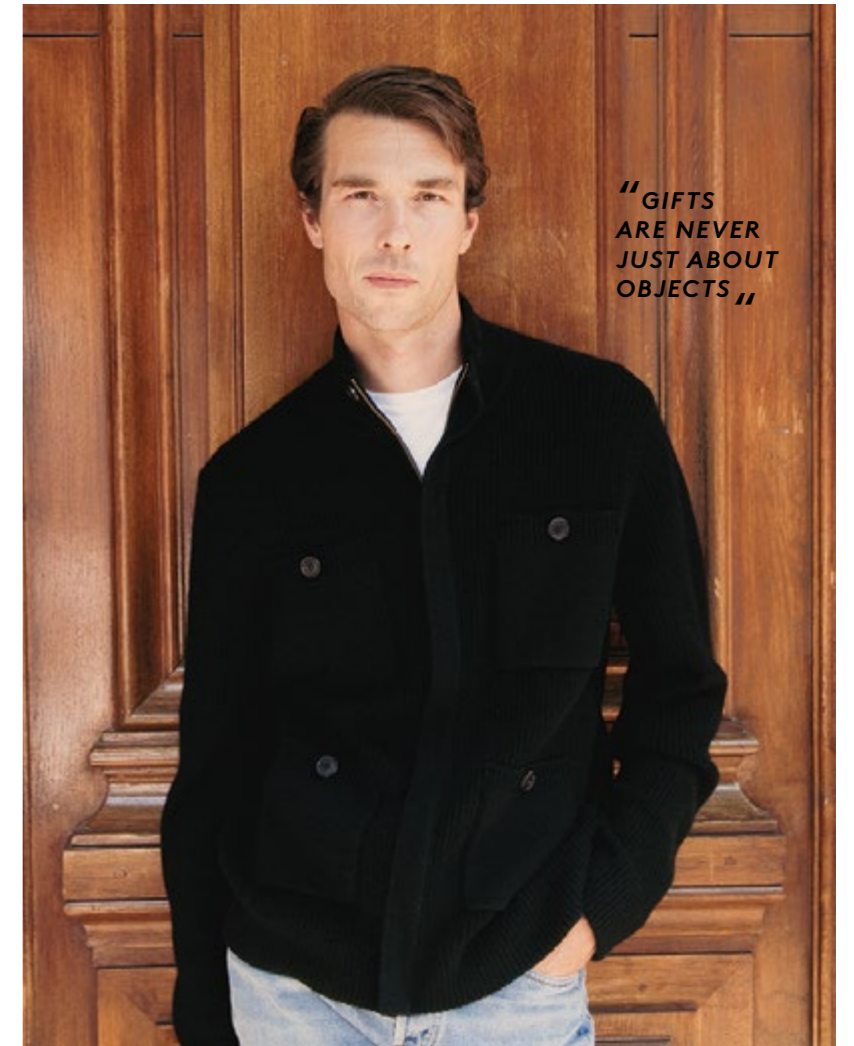
—
DONEGAL ROUND NECK PULLOVER. 100% CASHMERE, 6 PLY
COLOUR: REEF BLUE DONEGAL. REF. MO3505

Perfect GIFT

The writer OSCAR COOP-PHANE wondered what the MODERN AGE could have to do with the objects we give each other. SEARCH ENGINES provided him with some pleasant surprises.

Some of my friends have a strange new obsession with artificial intelligence. I don't blame them; humanity has always been intrigued by machines and you only have to reread the passages on the invention of the telephone to realise that it is also possible to derive something of rare beauty from them. I don't think, however, that search engines, despite all the knowledge that they accumulate - that they transform as my friends would say - will ever be able to pluck the strings of feelings or intuition.

I gave it a try by searching «gift» online. With the initial response, you're looking at a list of «gifts for someone who has everything». Maybe it's a legitimate question, or I understand why you might ask it, at least. I have to admit, though, that the answers made me laugh out loud. In first place: heated gloves. In third place: decadent hot chocolate - don't ask me what it is, I've been looking for a while and can't think of anything other than a gold-soaked cocoa drink. In fifth place are some of the best rechargeable batteries and



“GIFTS
ARE NEVER
JUST ABOUT
OBJECTS”

finally, after I stop, I kid you not, in eighth place, are socks to wear with flip-flops.

As I said, I had a good laugh. I also wondered what I could make out of flip-flop socks or rechargeable batteries, even the best ones. Plus, what would my reaction be if a friend - or worse still, a partner - gave me one of the twenty-one items on the list? Not only would I not know what to do with it, I'm sure my pride would take a hit too. Who do you take me for, with your unbelievable chocolate? My point is this: gifts are never just about the object - otherwise they're meaningless presents.

What really moves us is imagining the other person thinking, choosing and hesitating, making this big gesture, a lunge. It's a leap they take for us, into the unknown - two human beings, at last, coming together and telling each other so. I never want to give anything apart from a gesture that speaks to and embraces that person, who is just expecting a new memory. So forget the machines. It's about us.

Rose Nuit published by Grasset

—
RIBBED HIGH NECK JACKET
50% CASHMERE 50% WOOL, 4 PLY
COLOUR: BLACK. REF. MO3583

NEW horizons

Sailor ARTHUR LE VAILLANT talks about his trips out to sea, his COMMITMENT TO THE ENVIRONMENT and the importance of a GOOD JUMPER out on the open seas.

Your father crewed for some of the biggest names in sailing. What made you want to become a skipper?

I was lucky enough to grow up in La Rochelle, so I could swim before I could walk. The call of the open sea came quite late, when I was around 19. I didn't sail much with my father, who never pushed me into the sport, but I watched him a lot. We've been sailing together for a few years now, and he gave me a lot of support in the last Route du Rhum race.

You co-founded SailCoop and La Vague.

How did these two projects come about?

La Vague is an association that we launched with other sailors to see how we could help push the boundaries of our sport and to see how to play a part in transforming it in order to fully integrate it into global limits. Sailcoop is a sailing transport cooperative for passengers. There were ten of us last year and there are now more than 1,200 members. Decarbonising transport and reclaiming the time to travel, as Marguerite Duras so aptly put it, is one great adventure.

Where does your commitment to the environment come from?

It's a journey. 12 years ago, I had to take a step back after an accident. My commitment and the need to talk about and share these crucial issues also stem from my love of nature, of which we are all a part. I want us all to question ourselves together, because we all have a role to play and every hundredth of a degree counts if we are to have an inhabitable planet tomorrow.

What is your fondest memory at sea?

Perhaps most recently during the Route du Rhum, after passing through the storms off the Azores. That great single-handed trimaran, the sunset, the stars merging with the sea, a very strong feeling of belonging to this blue planet, a bit like

"A VERY STRONG SENSE OF BELONGING TO THIS BLUE PLANET"



the astronauts feeling that overview effect from the International Space Station as they look down on the Earth.

Do you have a favourite sailing outfit? It really depends on the conditions and the season, but in winter, I often take a cashmere jumper with me to keep warm or to help me fall asleep in a little cocoon, protecting me from storms and sea monsters...

Florence Arthaud gave you a jumper as a gift.

What memories do you associate with it?

Florence was like a lioness with her cubs, my mum and dad were very close to her and we are friends with her daughter Marie. It was my mother who told me the story of the jumper. On the other hand, I remember the story of my grandfather's jumpers, which we often repair and which I also wear, and some of which are Bompard. I like the idea that a jumper has had several lives.

RIBBED HOODIE. 70% COTTON 30% CASHMERE, 4 PLY COLOUR: PIGMENT BLUE. REF. MO3576

WEAVING memories

What PURPOSE DO OUR memories serve? PHILOSOPHER MARIE ROBERT analyses our relationship with the clothes that weave our MEMORIES.

What do our memories have to tell us? Why do they appear so often, without warning, with the curve of a street, a flash of light, or the simple sight of an old coat? Where do they come from? Who or what are they messengers for? We don't choose to remember; sometimes we even forget what we thought was indelible. We don't choose to forget either; our memory takes on a life of its own, slipping from fragment to fragment, from emotion to indelible thought. To keep moving forward, we sometimes have to practice deliberately forgetting to protect ourselves from embarrassment, pain, or whatever is holding us back so much that we can't anchor ourselves in the present. Conversely, we must also try, from time to time, to activate our memories so that we don't repeat our mistakes.

But at the end of the day, whether memories are unconscious, fleeting or forced, whether they fade on our tongue or remain etched forever, they form the basis of our identity. They remind us of who we are, what we have been and taunt our future selves. Our memories are a thread that we weave through all our lives, all our loves, all our beliefs. However much the days change, they

are there, lurking in the shadows of our thoughts, storing up our experiences. Because we have memories, we are able to pass them on, and the most disturbing thing is that they are embodied in the things around us, particularly in the clothes we wear. A jacket, a jumper, a scarf, are all cinema screens that project our attachments, our drunken evenings, our nights of hope, our defiant mornings. They are more than material possessions; they become talismans, the guardians of a temple we call memory.

In the twilight of our days, we will all remember the favourite clothes of the people we loved, the people that made them recognisable, and we'll all have in our mind's eye the look we had to face our most serious moments. From oblivion to presence, clothes weave our memories and veil them in eternity.

"OUR MEMORIES ARE A THREAD THAT WE WEAVE THROUGH ALL OUR LIVES, ALL OUR LOVES, ALL OUR BELIEFS"



HOUNDSTOOTH JACQUARD JACKET
100% CASHMERE, 8 PLY
COLOUR: OAT BEIGE/CHALET
REF. MO3532

ROUND NECK T-SHIRT
85% PIMA COTTON
15% CASHMERE,
2 EXTRAFINE PLY
COLOUR: AUTUMN WHITE
REF. MO2966N

FITTED RIBBED SNOOD
100% CASHMERE, 12 PLY
COLOUR: CHALET
REF. AK429

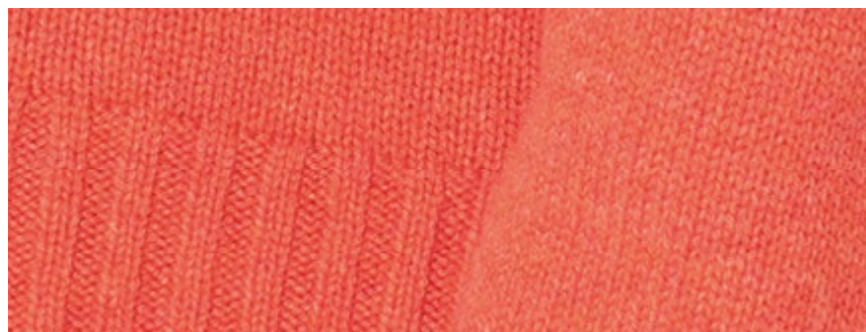
BUTTONED JACKET WITH POCKETS
90% WOOL 10% CASHMERE
COLOUR: NAVY BLUE
REF. MT124

DONEGAL ROUND NECK PULLOVER
100% CASHMERE, 4 PLY
COLOUR: OAT BEIGE DONEGAL
REF. MO3605

RIBBED STOLE
100% CASHMERE, 2 PLY
COLOUR: OAT BEIGE
REF. AK481

A new look AT FIBRES

*Ribbed knits, POINTELLE,
3D knitting... An OVERVIEW
of Eric Bompard's expertise via
9 of the Maison's TECHNIQUES.*

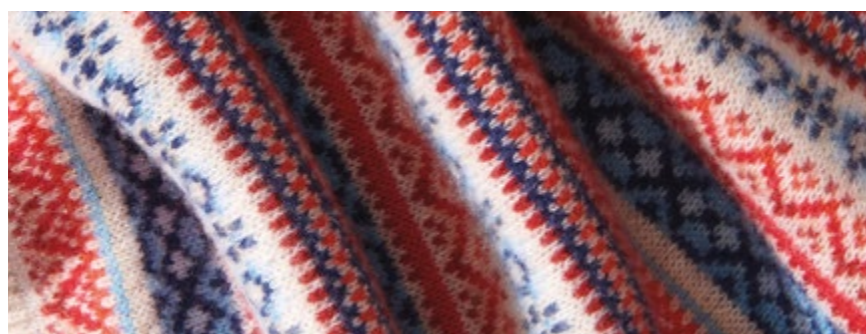
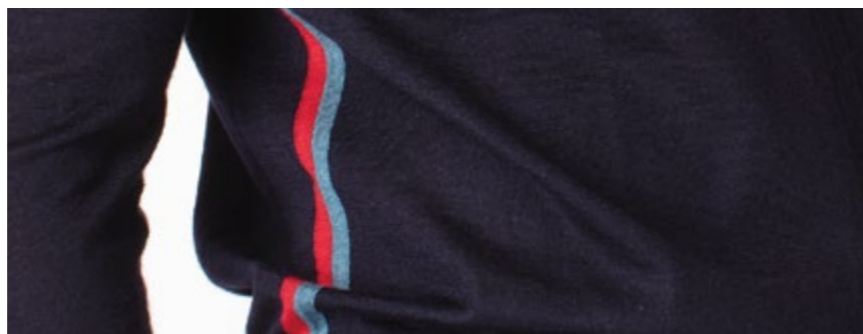


1. Back to the future.
Ever heard of 3D knitting?
Used by Atelier Bompard jumpers
to create stronger pieces with
no seams.
3D/Seamless technique

SEAMLESS ROUND NECK PULLOVER
100% CASHMERE, 6 PLY. COLOUR: GOJI. REF. MO3617

2. Competitive.
In the best sportswear
category, we're asking for
ultra-fine cashmere and silk.
It is lightweight, comfortable
and thermo-regulating, and
has long since proved its worth.
Ultra-fine Ski/Sport Cashmere and silk

EXTRAFINE JACKET WITH STRIPED DETAILS
70% CASHMERE 30% SILK, 2 EXTRAFINE PLY
COLOUR: NAVY BLUE. REF. MO3622



3. Scottish jacquard.
Straight out of the Shetland
Islands, this technique produces
designs that can be endlessly
repeated, or almost.
Fairisle jacquard technique

FAIR ISLE JACQUARD ROUND NECK PULLOVER
100% CASHMERE, 4 PLY. COLOUR: OAT BEIGE. REF. MO3618

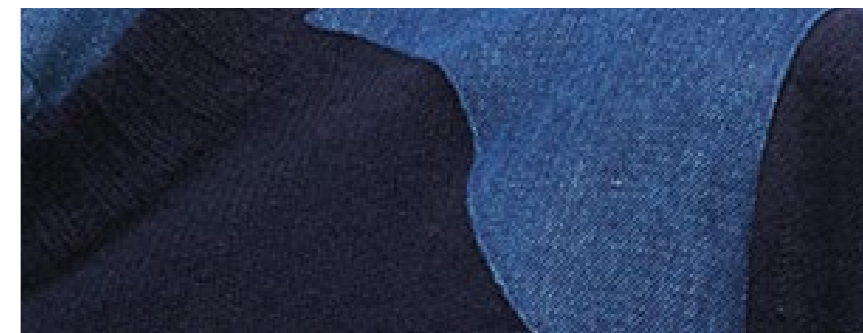
4. The true Irish jumper.
This is the sweater, with
its thick cables revealing an
intricately worked pattern, that
is instantly recognisable.
Signature Bompard twists

CABLES V-NECK PULLOVER. 100% CASHMERE, 2 PLY
COLOUR: CARAMEL BROWN. REF. MO3474



5. An eye for detail.
An Italian denim patch on
the shoulders of some of our
cashmeres (and yours).
Denim and Cashmere bi-material

ROUND NECK PULLOVER WITH DENIM INSERTS
100% CASHMERE, 4 PLY
COLOUR: NAVY BLUE. REF. MO3498



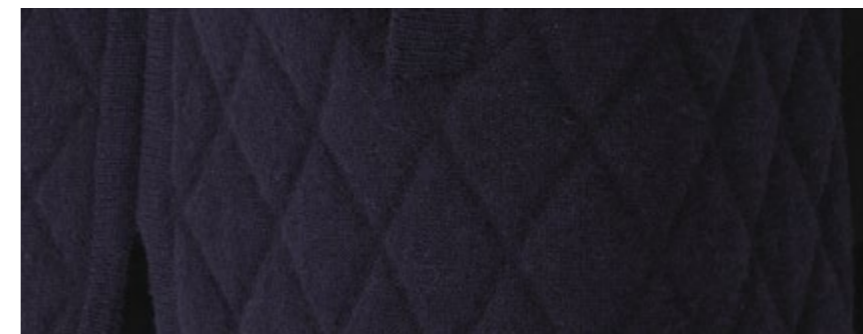
6. Rainbow.
In the mood for colour?
Go for intarsia, a technique
for creating graphic patterns
with a single layer of yarn.
Intarsia

COLOUR BLOCK SLEEVELESS V-NECK PULLOVER
85% CASHMERE 10% WOOL 5% COTTON, 4 PLY
COLOUR: NIGHT BLUE. REF. MO3495

7. Dressed for winter.
A bomber jacket made using
a quilted technique, revealing
a double-faced fabric and
a quilt pattern - and emerging
as the season's warmest.

Quilted

OVERSIZED QUILTED COAT
OUTSIDE: 64% WOOL 27% CASHMERE 8% POLYAMIDE
1% ELASTANE - INSIDE: 100% POLYAMIDE, 4 PLY
COLOUR: NAVY BLUE. REF. MT121



8. The ideal t-shirt.
So light you'd almost forget it's
there. Made from cotton and
cashmere, it's knitted into a
shape that prevents the loss of
material and offers impeccable
wear with every wash.

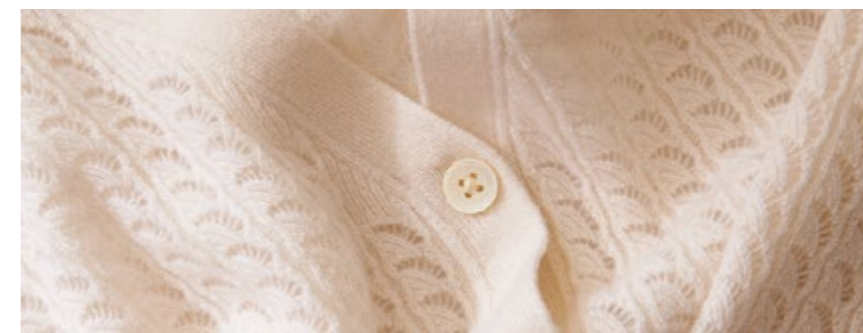
Ultra-fine cashmere

ROUND NECK T-SHIRT. 85% PIMA COTTON 15% CASHMERE,
2 EXTRAFINE PLY. COLOUR: AUTUMN WHITE. REF. MO2966N

9. Go for lace.
Or rather pointelle, an
ancestral knitting technique
that creates an airy,
feminine and light knit.

Pointelle

POINTELLE CARDIGAN. 100% CASHMERE, 2 PLY
COLOUR: AUTUMN WHITE. REF. MO3470



Into the wild

AN «OFF-ROAD» WARDROBE WHERE LOOSE KNITS OFFER FREEDOM OF MOVEMENT, WHILE JUMPERS FEATURE CABLES AND SINGULAR WEAVES FOR A CONTEMPORARY LOOK.



TURTLENECK PULLOVER WITH FANCY STITCHING. 100% CASHMERE, 4 PLY. COLOUR: REEF BLUE. REF. MO3439
ZIP-NECK BIB. 100% CASHMERE, 8 PLY. COLOUR: AUTUMN WHITE. REF. AK418
SEAMLESS TURTLENECK PULLOVER. 100% CASHMERE, 6 PLY. COLOUR: FENNEL. REF. MO3616
SAILOR HAT. 50% CASHMERE 50% WOOL, 4 PLY. COLOUR: VICUNA. REF. AK465
OFF-GAUGE TRIANGLE. 100% CASHMERE, 4 PLY. COLOUR: BLACK. REF. AK485



ON THE RIGHT: **MINI HERRINGBONE TURTLENECK PULLOVER.** 100% CASHMERE, 4 PLY. COLOUR: NAVY BLUE. REF. MO3528
TURTLENECK BIB. 100% CASHMERE, 6 PLY. COLOUR: CANOE BLUE. REF. AK432
SAILOR HAT. 50% CASHMERE 50% WOOL, 4 PLY. COLOUR: VICUNA. REF. AK465

ON THE LEFT: **SLIT TURTLENECK PULLOVER.** 100% CASHMERE, 4 PLY. COLOUR: MINERAL BLUE. REF. MO3520
SHORT SOCKS. 87% CASHMERE 13% ELASTANE, 2 PLY. COLOUR: MOUNTAIN BLUE. REF. AK165
SLUB STRIPES HIGH NECK PULLOVER. 98% CASHMERE 2% WOOL, 8 PLY. COLOUR: NAVY BLUE/AUTUMN WHITE. REF. MO3548



ON THE RIGHT: **RIBBED HOODIE**. 70% COTTON 30% CASHMERE, 4 PLY. COLOUR: SILVER GREY. REF. MO3576
RIBBED HAT. 100% CASHMERE, 4 PLY. COLOUR: OAT BEIGE. REF. AK220
MAXI TARTAN JACQUARD ROUND NECK PULLOVER. 78% CASHMERE 22% WOOL, 4 PLY. COLOUR: HUNTER GREEN. REF. MO3533
FITTED RIBBED SNOOD. 100% CASHMERE, 12 PLY. COLOUR: TURKISH DELIGHT PINK. REF. AK429
HERRINGBONE DETAIL ROUND NECK PULLOVER. 100% CASHMERE, 2 PLY. COLOUR: OAT BEIGE. REF. MO3590
RIBBED HOODED BIB. 50% CASHMERE 50% WOOL, 6 PLY. COLOUR: VICUNA. REF. AK467
ON THE LEFT: **ROUND NECK PULLOVER WITH RIBBED TRIMS**. 50% CASHMERE 50% YACK, 2 PLY. COLOUR: TAUPE. REF. MO3634



ON THE RIGHT: **SLEEVELESS CARDIGAN WITH POCKETS**. 100% CASHMERE, 2 PLY. COLOUR: NIGHT BLUE. REF. MO3492
MILANO TROUSERS WITH POCKETS. 85% WOOL 10% CASHMERE 5% ELASTANE, 2 PLY. COLOUR: NIGHT BLUE. REF. MO3516
RIBBED SCARF. 100% CASHMERE, 10 PLY. COLOUR: ZURICH GREEN. REF. AK413

ON THE LEFT: **HOODIE WITH DENIM INSERTS**. 50% CASHMERE 50% WOOL, 4 PLY. COLOUR: JAY. REF. MO3508
FLARED LONG SKIRT WITH BUTTONS. 70% CASHMERE 30% SILK, 2 PLY. COLOUR: BLACK. REF. MO3172
FITTED RIBBED SNOOD. 100% CASHMERE, 12 PLY. COLOUR: MOUNTAIN BLUE. REF. AK429

ON THE RIGHT: RIBBED TURTLENECK BOLERO. 100% CASHMERE, 4 PLY. COLOUR: CARAMEL BROWN. REF. AK472
SHORT-SLEEVED LONG DRESS. 100% CASHMERE, 4 PLY. COLOUR: BLACK. REF. MO2897
ON THE LEFT: HERRINGBONE DETAIL ROUND NECK PULLOVER. 100% CASHMERE, 2 PLY. COLOUR: JAY. REF. MO3590
OFF-GAUGE TRIANGLE. 100% CASHMERE, 4 PLY. COLOUR: NIGHT BLUE. REF. AK485





ON THE RIGHT: **ABSOLU BOMPARD CAPSULE COLLECTION: SLEEVELESS DIAMOND CABLES CARDIGAN.** 100% CASHMERE, 8 PLY. COLOUR: BEIGE. REF. MO3286
LOOSE DENIM SHIRT. 98% COTTON 2% ELASTANE. COLOUR: DENIM BLUE. REF. CS207
TARTAN JACQUARD MINI SKIRT. 60% WOOL 40% CASHMERE, 4 PLY. COLOUR: NAVY BLUE. REF. MO3521
SNOOD WITH DRAWSTRINGS. 100% CASHMERE, 10 PLY. COLOUR: OAT BEIGE. REF. AK477
RIBBED SCARF. 100% CASHMERE, 10 PLY. COLOUR: MOUNTAIN BLUE. REF. AK413
RIBBED LONG SOCKS. 96% CASHMERE 4% ELASTANE, 4 PLY. COLOUR: SILVER GREY. REF. AK468
ON THE LEFT: **ZIPPED HOODIE.** 100% CASHMERE, 2 PLY. COLOUR: CARAMEL BROWN. REF. MO1346N
LOOSE ROUND NECK T-SHIRT. 85% PIMA COTTON 15% CASHMERE, 2 EXTRAFINE PLY. COLOUR: AUTUMN WHITE. REF. MO3443
FITTED RIBBED SNOOD. 100% CASHMERE, 12 PLY. COLOUR: BLACKTHORN. REF. AK429
ZIP-NECK PULLOVER WITH SUEDE EFFECT DETAILS. 100% CASHMERE, 4 PLY. COLOUR: HUNTER GREEN. REF. MO3594



ON THE RIGHT: **SEAMLESS EXTRAFINE ROLL-NECK.** 100% CASHMERE, 2 EXTRAFINE PLY. COLOUR: BLACK. REF. MO2407
ON THE LEFT: **ROUND NECK PULLOVER WITH PUFF SLEEVES.** 100% CASHMERE, 2 PLY. COLOUR: VERMILION. REF. MO3484
RIBBED SNOOD. 100% CASHMERE, 4 PLY. COLOUR: VICUNA. REF. AK320
CLASSIC HAT. 100% CASHMERE, 4 PLY. COLOUR: KOHL. REF. AK8
DIAMOND POINTELLE TURTLENECK PULLOVER. 100% CASHMERE, 10 PLY. COLOUR: NAVY BLUE. REF. MO3557
MILANO MINI SKIRT. 48% CASHMERE 48% WOOL 4% ELASTANE, 2 PLY. COLOUR: BLACK. REF. MO3491
LONG SOCKS. 90% CASHMERE 10% ELASTANE, 2 PLY. COLOUR: SILVER GREY. REF. AK166



ON THE RIGHT: **BUTTONED JACKET WITH POCKETS**. 90% WOOL 10% CASHMERE. COLOUR: NAVY BLUE. REF. MT124
ROUND NECK PULLOVER WITH SUEDE EFFECT INSERTS. 100% CASHMERE, 2 PLY. COLOUR: CHALET. REF. MO3591
SAILOR HAT. 50% CASHMERE 50% WOOL, 4 PLY. COLOUR: VICUNA. REF. AK465

ON THE LEFT: **OVERSIZED QUILTED COAT**. OUTSIDE: 64% WOOL 27% CASHMERE 8% POLYAMIDE 1% ELASTANE
 INSIDE: 100% POLYAMIDE, 4 PLY. COLOUR: NAVY BLUE. REF. MT121
DONEGAL ROUND NECK PULLOVER. 100% CASHMERE, 6 PLY. COLOUR: REEF BLUE DONEGAL. REF. MO3505
PENCIL SKIRT WITH DARTS. 50% CASHMERE 50% WOOL, 2 PLY. COLOUR: ZURICH GREEN. REF. MO3514
CLASSIC SCARF. 100% CASHMERE. COLOUR: SILVER GREY. REF. A1B - **CLASSIC HAT**. 100% CASHMERE, 4 PLY. COLOUR: IOLITE. REF. AK8
RIBBED LONG SOCKS. 96% CASHMERE 4% ELASTANE, 4 PLY. COLOUR: SILVER GREY. REF. AK468



ON THE RIGHT: **MINI HERRINGBONE TURTLENECK PULLOVER**. 100% CASHMERE, 4 PLY. COLOUR: MARLOW. REF. MO3528
HERRINGBONE STRIPED FLARED SKIRT. 78% CASHMERE 22% WOOL, 2 PLY. COLOUR: NAVY BLUE. REF. MO3527
RIBBED SNOOD. 100% CASHMERE, 4 PLY. COLOUR: ROPE. REF. AK320

ON THE LEFT: **LOOSE V-NECK PULLOVER**. 100% CASHMERE, 6 PLY. COLOUR: ATLANTIS BLUE. REF. MO3482
TURTLENECK BIB. 100% CASHMERE, 6 PLY. COLOUR: OAT BEIGE. REF. AK432
RIBBED SNOOD. 100% CASHMERE, 4 PLY. COLOUR: TURKISH DELIGHT PINK. REF. AK320



ON THE RIGHT: **V-NECK PULLOVER WITH GUERNSEY DETAIL.** 100% CASHMERE, 4 PLY. COLOUR: NAVY BLUE. REF. MO3512
RIBBED HIGH NECK PULLOVER. 50% CASHMERE 50% YAK, 2 PLY. COLOUR: TAUPE. REF. MO3633
RIBBED CARDIGAN. 50% CASHMERE 50% YAK, 2 PLY. COLOUR: TAUPE. REF. MO3632
ON THE LEFT: **ZIP-UP HIGH NECK PULLOVER.** 100% CASHMERE, 4 PLY. COLOUR: NIGHT BLUE. REF. MO3556
RIBBED LOOSE HAT. 100% CASHMERE, 10 PLY. COLOUR: ROBIN RED. REF. AK412



ON THE RIGHT: **DIAMOND POINTELLE TURTLENECK PULLOVER.** 100% CASHMERE, 10 PLY. COLOUR: ROPE. REF. MO3557
ARTICHOKE PRINT SQUARE SCARF. 100% CASHMERE, 2 EXTRAFINE PLY. COLOUR: PIGMENT BLUE. REF. A761
ZIP-NECK PULLOVER. 100% CASHMERE, 2 PLY. COLOUR: GOJI. REF. MO1372
LOOSE DENIM SHIRT. 98% COTTON 2% ELASTANE. COLOUR: DENIM BLUE. REF. CS208
ZIP-UP JACKET WITH DENIM INSERTS. 100% CASHMERE, 4 PLY. COLOUR: NAVY BLUE. REF. MO3497
CHECKED PRINT ROUND NECK PULLOVER. 100% CASHMERE, 2 PLY. COLOUR: AUTUMN WHITE/PIGMENT BLUE. REF. MO3502
FLARED MILANO SKIRT. 80% PIMA COTTON 14% CASHMERE 6% ELASTANE, 4 EXTRAFINE PLY. COLOUR: BLACK. REF. MO3457

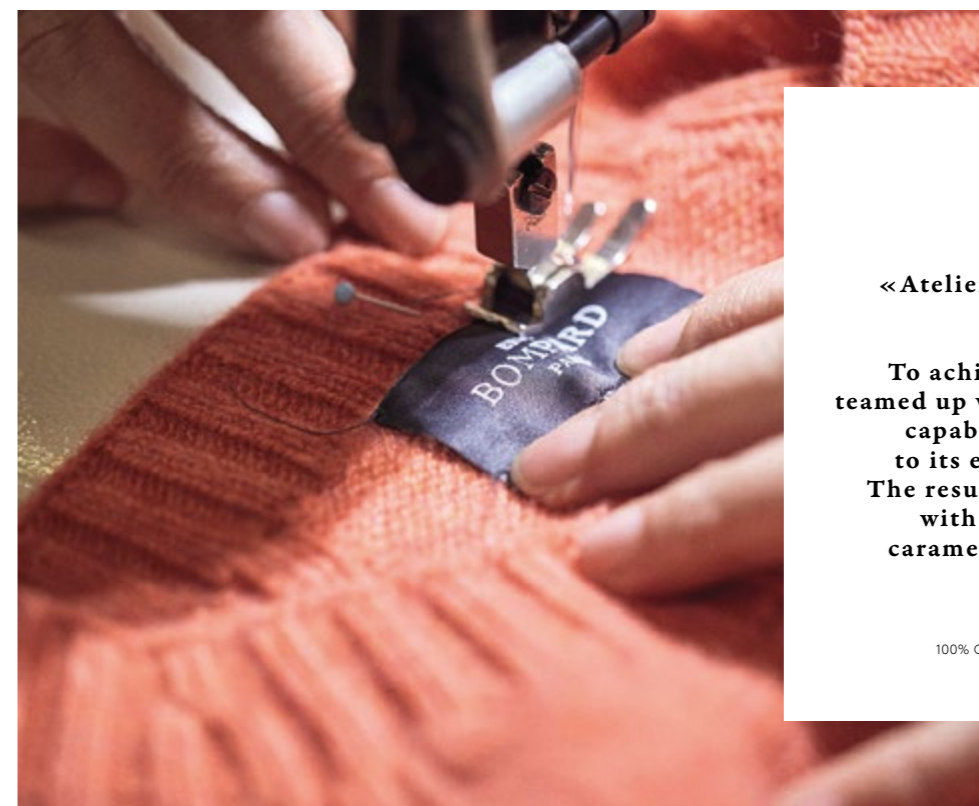
ON THE LEFT: **FANCY CABLE BOAT NECK PULLOVER.** 100% CASHMERE, 6 PLY. COLOUR: MINERAL BLUE. REF. MO3560
TROUSERS WITH POCKETS. 90% WOOL 10% CASHMERE. COLOUR: NAVY BLUE. REF. MO3185
GIANT PATCHWORK SCARF. 55% WOOL 23% CASHMERE 22% COTTON, 4 PLY. COLOUR: NIGHT BLUE. REF. AK463



Can you tell us more about your creative approach? I was dealing with the loss of balance between home and work, I wanted to start to respond by designing a mixed collection that would appeal to everyone. I really wanted to make the most of the material, taking knitwear where it had never been before and exploring all its possibilities.

Tell us what is special about your creations? I worked on their ergonomic design so that they fit like a glove. They had to be soft, comfortable and fit the curves of the body perfectly.

Did you discover any parallels with your work as a designer? It's very difficult to keep it simple! It's every designer's dream because we strive for simplicity – mastering the art of giving an outward simplicity to an intricate form.



KNOW-HOW

MADE IN FRANCE

The aim of the «Atelier Bompard» collection is to offer pieces made exclusively in France. To achieve this, the brand has teamed up with French workshops capable of weaving cashmere to its exacting specifications. The result is a range of jumpers with pure lines in shades of caramel, goji and fennel, with matching accessories.

SEAMLESS ROUND NECK PULLOVER
100% CASHMERE, 6 PLY. COLOUR GOJI. REF. MO3617

ORA-ÏTO
PLURAL designer

Renowned designer Ora-ïto has collaborated with Eric Bompard to create a collection OF GRAPHIC and futuristic pieces – HIS FIRST foray into the world of ready-to-WEAR.

What is your relationship with Maison Eric Bompard? I've been wearing their cashmeres for a long time. We also share a taste for craftsmanship and a desire to create pieces that will last over time.

What inspired this collection? Both the female body and the proportions of Le Corbusier's architecture, as seen in the Modulor. The beige of the knitwear evokes the concrete of the MAMO, my art centre in Marseille, while the play of colours echoes those in the Cité Radieuse. The story I wanted to tell takes place in the future, as if the Cité Radieuse were a spaceship and its entire crew disembarked in Kubrickian garb.



CAPSULE COLLECTION

PRECIOUS PIECES

To pay homage to his exceptional expertise, Eric Bompard has created «Absolu Bompard», a line of knitwear with original cuts and volumes. A comfortable and enticing wardrobe, the pieces are made from raw and natural fibres, and reflect the codes of luxury craftsmanship so dear to the fashion house.

ABSOLU BOMPARD CAPSULE COLLECTION:
CABLES OVERSIZED SCARF. 100% CASHMERE, 8 PLY
COLOUR: BEIGE. REF. AK434



An exercise in style

WITH ITS SUBTLE DETAILS, INTRICATE WEAVES AND METICULOUS LINES,
KNITWEAR FITS PERFECTLY INTO THE URBAN DRESS CODE.



OVERSIZE TURTLENECK PULLOVER. 100% CASHMERE, 4 PLY. COLOURS: BLACK AND ROBIN RED. REF. MO3506
FLARED MILANO SKIRT. 80% PIMA COTTON 14% CASHMERE 6% ELASTANE, 4 EXTRAFINE PLY. COLOUR: ROBIN RED. REF. MO3457

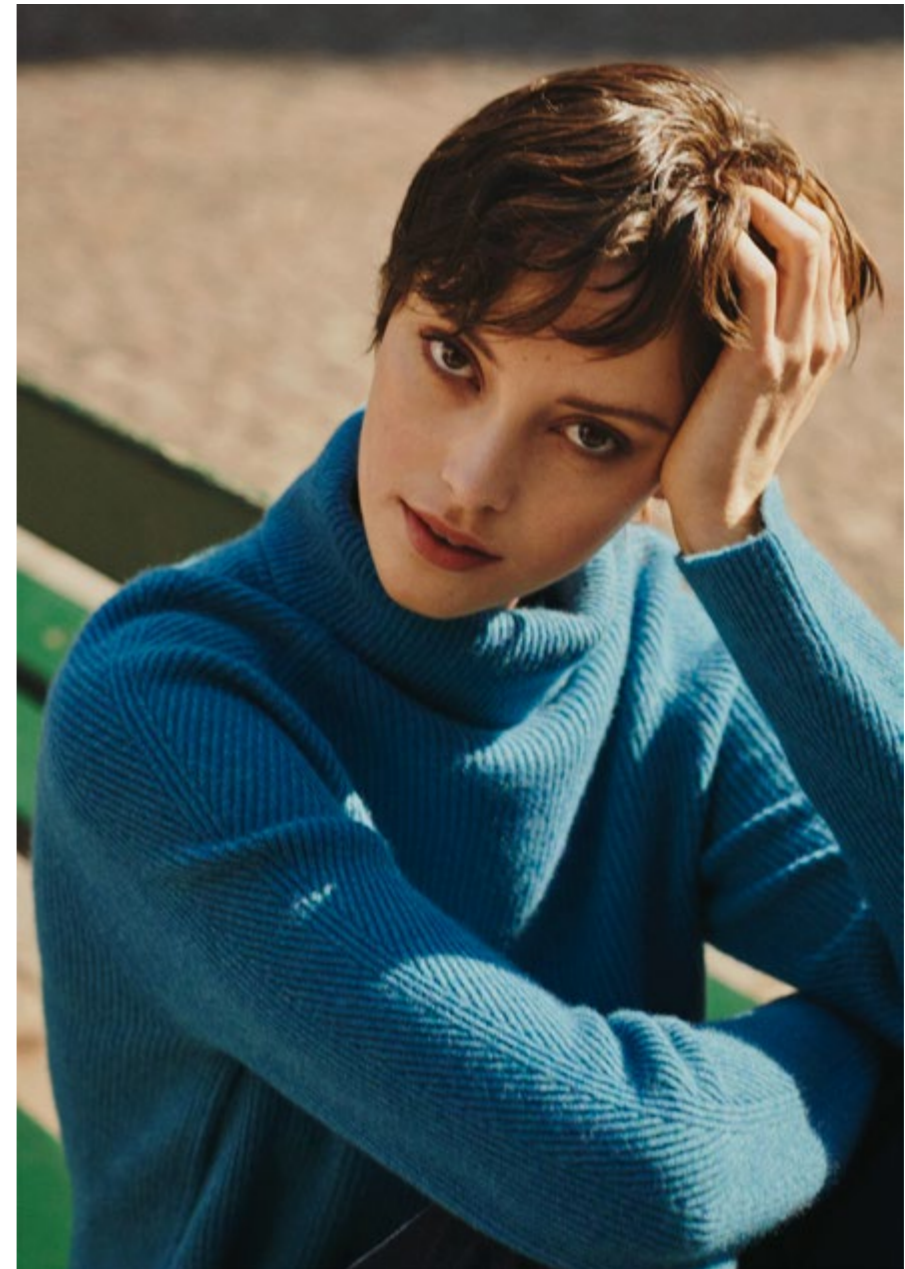


ON THE RIGHT: **HIGH NECK LONG DRESS**. 100% CASHMERE, 2 PLY. COLOUR: BLACKTHORN. REF. MO3490
ON THE LEFT: **LOOSE DENIM SHIRT**. 98% COTTON 2% ELASTANE. COLOUR: DENIM BLUE. REF. CS207
CABLES ROUND NECK PULLOVER. 100% CASHMERE, 8 PLY. COLOUR: VICUNA. REF. MO3472
COLOUR BLOCK SCARF. 85% CASHMERE 10% WOOL 5% COTTON, 4 PLY. COLOUR: NIGHT BLUE. REF. AK490
CLASSIC V-NECK PULLOVER. 100% CASHMERE, 2 PLY. COLOUR: OAT BEIGE. REF. MO4N
CASHMERE VOILE STOLE. 100% CASHMERE, 2 EXTRAFINE PLY. COLOUR: VICUNA. REF. A12



ON THE RIGHT: **LOOSE SHIRT**. 100% COTTON. COLOUR: WHITE. REF. CS204 - **HERRINGBONE DOUBLE-BREASTED COAT**. 50% YAK 40% WOOL 10% CASHMERE
 LINING: 55% POLYESTER 45% VISCOSE. COLOUR: CHALET. REF. MT122 - **DOUBLE-FACED OVERSIZED COAT**. 90% WOOL 10% CASHMERE
 LINING: 55% POLYESTER 45% VISCOSE. COLOUR: NAVY BLUE. REF. MT112 - **TROUSERS WITH POCKETS**. 90% WOOL 10% CASHMERE. COLOUR: NAVY BLUE. REF. MO3185

ON THE LEFT: **FANCY CABLE BOAT NECK PULLOVER**. 100% CASHMERE, 6 PLY. COLOUR: NAVY BLUE. REF. MO3560 - **TARTAN JACQUARD MINI SKIRT**
 60% WOOL 40% CASHMERE, 4 PLY. COLOUR: NAVY BLUE. REF. MO3521 - **RIBBED SNOOD**. 100% CASHMERE, 4 PLY. COLOUR: JAY. REF. AK320
SEAMLESS HIGH NECK PULLOVER. 100% CASHMERE, 6 PLY. COLOUR: WHEAT. REF. MO3614 - **RIBBED HOODED BIB**
 50% CASHMERE 50% WOOL, 6 PLY. COLOUR: VICUNA. REF. AK467 - **FITTED RIBBED SNOOD**. 100% CASHMERE, 12 PLY. COLOUR: VICUNA. REF. AK429



ON THE RIGHT: **HAMMER-SLEEVED TURTLENECK PULLOVER**. 100% CASHMERE, 2 PLY. COLOUR: CANOE BLUE. REF. MO3544
ON THE LEFT: **SEAMLESS ROUND NECK PULLOVER**. 100% CASHMERE, 6 PLY. COLOUR: CARAMEL BROWN. REF. MO3615
BUTTONED JACKET WITH POCKETS. 90% WOOL 10% CASHMERE. COLOUR: VICUNA. REF. MT123
RIBBED STOLE. 100% CASHMERE, 2 PLY. COLOUR: GOJI. REF. AK481



SEAMLESS EXTRAFINE

ROLL-NECK
100% CASHMERE,
2 EXTRAFINE PLY
COLOUR: BLACK
REF. MO2407

**FLARED LONG SKIRT
WITH BUTTONS**
70% CASHMERE
30% SILK, 2 PLY
COLOUR: NAVY BLUE
REF. MO3172

TARTAN STOLE
30% SILK 70% CASHMERE
COLOUR: ZURICH GREEN
REF. A801

TIE BELT
100% LEATHER
COLOUR: BLACK
REF. CE37



ON THE RIGHT: **ABSOLU BOMPARD CAPSULE COLLECTION**: 100% CASHMERE, 8 PLY: **LOOSE CABLES CREW NECK PULLOVER**, COLOUR: BEIGE, REF. MO3647
CABLES MINI SKIRT, COLOUR: BEIGE, REF. MO3643 - **CABLES SNOOD**, COLOUR: ECRU, REF. AK502
CABLES TURTLENECK, COLOUR: ECRU, REF. MO3268 - **CABLES SCARF WITH POCKETS**, COLOUR: ECRU, REF. AK439

ON THE LEFT: **LOOSE SHIRT**, 100% COTTON, COLOUR: WHITE, REF. CS204 - **CABLES SLEEVELESS ROUND NECK PULLOVER**, 100% CASHMERE, 2 PLY
 COLOUR: IOLITE, REF. MO3469 - **DOUBLE-FACED QUILTED TEDDY JACKET**, OUTSIDE: 64% WOOL 27% CASHMERE 8% POLYAMIDE 1% ELASTANE
 INSIDE: 100% POLYAMIDE, 4 PLY, COLOUR: BLACK, REF. MO3494



ON THE RIGHT: **COLOUR BLOCK SLEEVELESS V-NECK PULLOVER**. 85% CASHMERE 10% WOOL 5% COTTON, 4 PLY
 COLOUR: NIGHT BLUE. REF. MO3495 - **DENIM JEANS**. 98% COTTON 2% ELASTANE. COLOUR: INDIGO BLUE. REF. CT010

ON THE LEFT: **HOUNDSTOOTH JACQUARD JACKET**. 100% CASHMERE, 8 PLY. COLOUR: OAT BEIGE/CHALET. REF. MO3552
FITTED RIBBED SNOOD. 100% CASHMERE, 12 PLY. COLOUR: CHALET. REF. AK429
DONEGAL ROUND NECK PULLOVER. 100% CASHMERE, 4 PLY. COLOUR: OAT BEIGE DONEGAL. REF. MO3605
RIBBED STOLE. 100% CASHMERE, 2 PLY. COLOUR: OAT BEIGE. REF. AK481
ROUND NECK T-SHIRT. 85% PIMA COTTON 15% CASHMERE, 2 EXTRAFINE PLY. COLOUR: AUTUMN WHITE. REF. MO3071N
BUTTONED TEDDY JACKET WITH POCKETS. WOVEN FABRIC: 90% WOOL 10% CASHMERE
 KNIT: 100% CASHMERE - LINING: 55% POLYESTER 45% VISCOSE. COLOUR: BLACK. REF. MT126



ON THE RIGHT: **RIBBED ZIP-NECK PULLOVER**. 100% CASHMERE, 4 PLY. COLOUR: OAT BEIGE. REF. MO3596
DOUBLE-FACED COAT. 90% WOOL 10% CASHMERE - LINING: 55% POLYESTER 45% VISCOSE. COLOUR: BLACK. REF. MT115
SLUB STRIPES ROUND NECK PULLOVER. 98% CASHMERE 2% WOOL, 8 PLY. COLOUR: SHADED KHAKI/NAVY BLUE. REF. MO3547
ON THE LEFT: **ROUND NECK PULLOVER WITH DENIM INSERTS**. 100% CASHMERE, 4 PLY. COLOUR: NAVY BLUE. REF. MO3498



SHAWL COLLAR PULLOVER
100% CASHMERE, 4 PLY
COLOUR: MARLOW
REF. MO3600

**ROUND NECK PULLOVER
WITH SUEDE EFFECT INSERTS**
100% CASHMERE, 2 PLY
COLOUR: CHALET
REF. MO3591

VASARELY SQUARE SCARF
100% SILK. COLOUR:
AUTUMN WHITE/ARTICHOKE
REF. A799

**PATCHWORK EFFECT
ROUND NECK PULLOVER**
100% CASHMERE, 6 PLY
COLOUR: GOJI
REF. MO3504

CLASSIC SCARF
100% CASHMERE
COLOUR: OAT BEIGE. REF. A1B



ON THE RIGHT: **CABLES LOOSE ROUND NECK PULLOVER**, 100% CASHMERE, 4 PLY, COLOUR: CARAMEL BROWN, REF. MO3551 - **MILANO JACKET WITH POCKETS** 90% WOOL 10% CASHMERE, 4 EXTRAFINE PLY, COLOUR: ZURICH GREEN, REF. MO3467 - **CABLE TURTLENECK BIB**, 100% CASHMERE, 4 PLY, COLOUR: CARAMEL BROWN, REF. AK466 **SNOOD WITH DRAWSTRINGS**, 100% CASHMERE, 10 PLY, COLOUR: OAT BEIGE, REF. AK477 - **TIE BELT**, 100% LEATHER, COLOUR: HAVANA, REF. CE37

ON THE LEFT: **LOOSE SHIRT**, 100% COTTON, COLOUR: WHITE, REF. CS204 - **CABLES SLEEVELESS ROUND NECK PULLOVER**, 100% CASHMERE, 2 PLY, COLOUR: IOLITE, REF. MO3469 **MILANO MINI SKIRT**, 48% CASHMERE 48% WOOL 4% ELASTANE, 2 PLY, COLOUR: BLACK, REF. MO3491 - **RIBBED HAT**, 100% CASHMERE, 4 PLY COLOUR: OAT BEIGE, REF. AK220 - **RIBBED STOLE**, 100% CASHMERE, 2 PLY, COLOUR: METEORITE GREY, REF. AK481 - **ROUND NECK PULLOVER WITH SUEDE EFFECT ELBOW PATCHES** 50% CASHMERE 50% WOOL, 6 PLY, COLOUR: KOHL, REF. MO2949 - **REVERSIBLE TECHNICAL JACKET**, OUTSIDE: 70% WOOL 30% CASHMERE - INSIDE: 100% POLYAMIDE, 2 PLY COLOUR: BLACK, REF. MO3587 - **BUTTONED TEDDY JACKET WITH POCKETS**, WOVEN FABRIC: 90% WOOL 10% CASHMERE - KNIT: 100% CASHMERE LINING: 55% POLYESTER 45% VISCOSE, COLOUR: BLACK, REF. MT126 - **DENIM CAP**, 65% COTTON 35% LINEN, COLOUR: DENIM BLUE, REF. A798 **ROUND NECK T-SHIRT**, 85% PIMA COTTON 15% CASHMERE, 2 EXTRAFINE PLY, COLOUR: AUTUMN WHITE, REF. MO3071N - **RIBBED MARL ZIP-NECK PULLOVER**, 100% CASHMERE, 4 PLY COLOUR: CARAMEL BROWN/VICUNA, REF. MO3598 - **DENIM JEANS**, 98% COTTON 2% ELASTANE, COLOUR: INDIGO BLUE, REF. CT010 - **FITTED RIBBED SNOOD** 100% CASHMERE, 12 PLY, COLOUR: MINERAL BLUE, REF. AK429 - **RIBBED LOOSE HAT**, 100% CASHMERE, 10 PLY, COLOUR: ROPE, REF. AK412



**CABLES ROUND
NECK PULLOVER**
100% CASHMERE, 4 PLY
COLOUR: GOJI
REF. MO3558

DENIM JEANS
98% COTTON 2% ELASTANE
COLOUR: INDIGO BLUE
REF. CT010

**ROUND NECK PULLOVER
WITH SUEDE EFFECT
ELBOW PATCHES**
50% CASHMERE
50% WOOL, 6 PLY
COLOUR: HUNTER GREEN
REF. MO2949

CLASSIC SCARF
100% CASHMERE
COLOUR: SILVER GREY
REF. A1B

RIBBED HAT
100% CASHMERE, 4 PLY
COLOUR: SILVER GREY
REF. AK220

**TARTAN PRINT
SQUARE SCARF**
100% CASHMERE,
2 EXTRAFINE PLY
COLOUR: SHADED KHAKI
REF. A784

LOOSE DENIM SHIRT
98% COTTON 2% ELASTANE
COLOUR: DENIM BLUE
REF. CS208

RIBBED HOODIE
70% COTTON
30% CASHMERE, 4 PLY
COLOUR: PIGMENT BLUE
REF. MO3576



JONONE

«I am an artist of colour and movement»

JonOne, also known as JON156, was born in Harlem, New York, where he explored GRAFFITI before moving to Paris 35 years ago. A master of COLOUR and heir to the Jackson Pollock dripping technique, he is PASSIONATE about Maison Bompard.

You are the embodiment of boldness and creativity, and your work is all about movement?

The world is constantly changing and evolving. Movement is important. I used to work with antique dealers; mixing old and new art gives us a fresh

perspective. You have to respect the old but mix it with the new, that's what brings class and elegance. Style, that timeless thing, is the blend of traditional and modern. People are more open-minded today than they used to be. Who could have imagined that I would one day be working with Eric Bompard?

How do you establish the dialogue between your two worlds?

I think the dialogue between the street, street art and the more subdued world of Bompard is important. I really like Bompard's style, but to appeal to the new generation, you have to evolve the classics in small ways. My work gives people who wouldn't buy Bompard the opportunity to come into the shop and discover the brand.

What did you like about Bompard?

I like the fact that it's a French company that designs very high quality products. It's the best cashmere. They have a great team who are very committed. There's a soul at Bompard, a know-how, a love of beauty. They work alongside artists on a wide range of projects.

Do you also share their taste for colour?

I immediately saw a connection between their range of colours and my work. What we're going to be presenting are very colourful, limited edition garments, all of which will be signed. Before working with them, I went into the boutique to buy a jumper for my mother-in-law; I was amazed to see all the colours of scarves on the shelves; it was an explosion of colours. Colour puts me in a good mood.

How did this collaboration come about?

We both wanted to work from my silhouette, which is part of my paintings, the décor and my studio, which is full of paint. I never change, I'm always covered in paint. People always ask me if they can have a shirt, jeans or trainers like mine, if I cover them with drops of paint on purpose. The creative director at Bompard heard me and wanted to do a line of cashmere clothes inspired by my paint-stained studio outfits. These are clothes I could wear. There will also be scarves with my tag, my signature and a stole inspired by a painting done especially for Bompard. I'm very proud of that.

Bompard ARTICHOKE by Julien Sebbag

A fan of raw produce and SIMPLE, CONVIVIAL, LOCAL CUISINE, the chef has come up with an original RÉCIPE to enhance this vegetable, which is the inspiration for the ERIC BOMPARD collection.

INGREDIENTS:

1 artichoke
100g fresh cream
30g trout eggs
Zest of one lemon
A few mint leaves
Sumac
Frying oil



Jewish artichoke recipe

This recipe of Judeo-Roman origin is an emotional one for me. It's full of history and memories. And it's really delicious.

- Start by removing the outer leaves.
- Using a bread knife, cut off the ends of the leaves and stem (both ends).
- Using a vegetable peeler, peel the rest of the slightly furry stem.
- To prevent the artichoke oxidising, soak it in water with a squeeze of lemon in it.
- Use your fingers to open the leaves until it resembles a flower then remove the grass with a paring knife.

Place the artichokes upside down in oil that has been heated to 170°C.

Leave the artichokes to cook for around fifteen minutes. The oil must not be too hot or it will burn. Leave to cool on absorbent paper.

Serve on a bed of fresh cream with a few trout roe on the side.

Zest the lemon and sprinkle a few mint leaves.

Ensemble

A LOOSE SILHOUETTE THAT'S JUST RIGHT,
LOOSE CUTS, CHUNKY OR CLOSE-FITTING KNIT-WEAR...
INDOOR CLOTHING CAN BE WORN OUTDOORS, AND VICE VERSA.



CABLES TURTLENECK PULLOVER. 100% CASHMERE, 8 PLY. COLOUR: CHALET. REF. MO3533
HERRINGBONE STRIPED FLARED SKIRT. 78% CASHMERE 22% WOOL, 2 PLY. COLOUR: OAT BEIGE. REF. MO3527
RIBBED SNOOD. 100% CASHMERE, 4 PLY. COLOUR: VICUNA. REF. AK320
FANCY RIB TURTLENECK PULLOVER. 100% CASHMERE, 6 PLY. COLOUR: ATLANTIS BLUE. REF. MO3171
RIBBED SCARF. 100% CASHMERE, 10 PLY. COLOUR: MOUNTAIN BLUE. REF. AK413
CLASSIC HAT. 100% CASHMERE, 4 PLY. COLOURS: ROPE AND MOUNTAIN BLUE. REF. AK8



ON THE RIGHT: **FANCY RIB V-NECK PULLOVER.** 100% CASHMERE, 4 PLY. COLOUR: TURKISH DELIGHT PINK. REF. MO3536
CASUAL TROUSERS. 100% CASHMERE, 2 PLY. COLOUR: CARAMEL BROWN. REF. MO3440
SHORT SOCKS. 87% CASHMERE 13% ELASTANE, 2 PLY. COLOUR: ROPE. REF. AK165

ON THE LEFT: **SLEEVELESS CROPPED ROUND NECK PULLOVER.** 100% CASHMERE, 4 PLY. COLOUR: OAT BEIGE. REF. MO3569
POINTELLE LONG SKIRT. 47% CASHMERE 53% LINEN, 4 PLY. COLOUR: AUTUMN WHITE. REF. MO3458
ABSOLU BOMPARD CAPSULE COLLECTION: CABLES PLAID. 100% CASHMERE, 8 PLY. COLOUR: ECRU. REF. AK408



ON THE RIGHT: **SLEEVELESS GRANDAD-STYLE PULLOVER**. 100% CASHMERE, 2 PLY. COLOUR: NAVY BLUE. REF. MO3156
CARROT TROUSERS WITH DARTS. 90% WOOL 10% CASHMERE. COLOUR: NAVY BLUE. REF. MO3182

ON THE LEFT: **CHEQUERBOARD CABLES ROUND NECK PULLOVER**. 100% CASHMERE, 6 PLY. COLOUR: CANOE BLUE. REF. MO3523
FITTED RIBBED SNOOD. 100% CASHMERE, 12 PLY. COLOUR: GOLDEN YELLOW. REF. AK429
WOVEN LINES PRINT SQUARE SCARF. 100% CASHMERE, 2 EXTRAFINE PLY. COLOUR: CANOE BLUE. REF. A785
HIGH NECK PULLOVER. 100% CASHMERE, 4 PLY. COLOUR: FENNEL. REF. MO3570 - **TIE BELT**. 100% LEATHER. COLOUR: HAVANA. REF. CE37



ON THE RIGHT: **BLAZER WITH POCKETS**. 50% CASHMERE 50% WOOL, 2 PLY. COLOUR: ROBIN RED. REF. MO3475 - **FLARED MILANO SKIRT**. 80% PIMA COTTON 14% CASHMERE 6% ELASTANE, 4 EXTRAFINE PLY. COLOUR: ROBIN RED. REF. MO3457 - **RIBBED LOOSE HAT**. 100% CASHMERE, 10 PLY. COLOUR: ROBIN RED. REF. AK412 - **RAGLAN-SLEEVED TURTLENECK PULLOVER** 100% CASHMERE, 6 PLY. COLOUR: MINERAL BLUE. REF. MO3525 - **MARL FLARED SKIRT**. 100% CASHMERE, 6 PLY. COLOUR: KOHL/CANOE BLUE. REF. MO3541
RIBBED LOOSE HAT. 100% CASHMERE, 10 PLY. COLOUR: CANOE BLUE. REF. AK412 - **WOMEN GLOVES**. 100% CASHMERE, 4 PLY. COLOUR: MINERAL BLUE. REF. AK7N
HERRINGBONE STRIPED ROUND NECK PULLOVER. 78% CASHMERE 22% WOOL, 2 PLY. COLOUR: OAT BEIGE. REF. MO3529 - **TURTLENECK DRESS WITH BUTTONED SLEEVES**. 100% CASHMERE, 4 PLY COLOUR: HUNTER GREEN. REF. MO3526 - **VASARELY SQUARE SCARF**. 100% SILK. COLOUR: HUNTER GREEN/TURKISH DELIGHT PINK. REF. A799 - **WOMEN GLOVES**. 100% CASHMERE, 4 PLY COLOUR: HUNTER GREEN. REF. AK7N - **RIBBED LONG SOCKS**. 96% CASHMERE 4% ELASTANE, 4 PLY. COLOUR: SILVER GREY. REF. AK468
ON THE LEFT: **EXTRAFINE ROUND NECK PULLOVER**. 100% CASHMERE, 2 EXTRAFINE PLY. COLOUR: BLACK. REF. MO2241N - **ZIP-NECK PONCHO**. 100% CASHMERE, 4 PLY COLOUR: KOHL. REF. AK475 - **POINTELLE SOCKS**. 94% CASHMERE 6% ELASTANE, 2 PLY. COLOUR: AUTUMN WHITE. REF. AK495



ON THE RIGHT: **LOOSE SHIRT**. 100% COTTON. COLOUR: WHITE. REF. CS204 - **ROUND NECK PULLOVER WITH SUEDE EFFECT INSERTS**. 100% CASHMERE, 4 PLY
 COLOUR: BLACKTHORN. REF. MO3499 - **SAILOR HAT**. 50% CASHMERE 50% WOOL, 4 PLY. COLOUR: VICUNA. REF. AK465
SLANTED RIB ROUND NECK PULLOVER. 100% CASHMERE, 4 PLY. COLOUR: ATLANTIS BLUE. REF. MO3485 - **DENIM PATCHWORK PRINT STOLE**
 100% CASHMERE, 2 EXTRAFINE PLY. COLOUR: JAY. REF. A769
 ON THE LEFT: **SEAMLESS TURTLENECK PULLOVER**. 100% CASHMERE, 6 PLY. COLOUR: FENNEL. REF. MO3616
SAILOR HAT. 50% CASHMERE 50% WOOL, 4 PLY. COLOUR: NAVY BLUE. REF. AK465



ON THE RIGHT: **EXTRAFINE TURTLENECK PULLOVER**. 100% CASHMERE, 2 EXTRAFINE PLY. COLOUR: BLACKTHORN. REF. MO940N
BELTED COSY JACKET. 100% CASHMERE, 4 PLY. COLOUR: ZURICH GREEN. REF. MO3540
DOUBLE-FACED OVERSIZED COAT. 90% WOOL 10% CASHMERE - LINING: 55% POLYESTER 45% VISCOSE. COLOUR: VICUNA. REF. MT112
RIBBED STOLE. 100% CASHMERE, 2 PLY. COLOUR: OAT BEIGE. REF. AK481

ON THE LEFT: **FANCY STITCH SLEEVELESS V-NECK PULLOVER**. 100% CASHMERE, 2 PLY. COLOUR: ZURICH GREEN. REF. MO3486
FLARED MILANO SKIRT. 80% PIMA COTTON 14% CASHMERE 6% ELASTANE, 4 EXTRAFINE PLY. COLOUR: ZURICH GREEN. REF. MO3457



**FAIR ISLE JACQUARD
TURTLENECK PULLOVER**
100% CASHMERE, 12 PLY
COLOUR: OAT BEIGE
REF. MO3620

RIBBED HEADBAND
100% CASHMERE, 12 PLY
COLOUR: ZÜRICH GREEN
REF. AK480

**FANCY CABLE
ZIP-NECK PULLOVER**
100% CASHMERE, 6 PLY
COLOUR: NIGHT BLUE
REF. MO3597

**FAIR ISLE JACQUARD
ROUND NECK PULLOVER**
100% CASHMERE, 4 PLY
COLOUR: OAT BEIGE
REF. MO3618

SCARF HOOD WITH POCKET
100% CASHMERE, 6 PLY
COLOUR: CANOE BLUE
REF. AK469



ON THE RIGHT: **SEAMLESS ROUND NECK PULLOVER.** 100% CASHMERE, 6 PLY. COLOUR: FENNEL. REF. MO3615
MARL ROUND NECK PULLOVER. 100% CASHMERE, 4 PLY. COLOUR: SILVER GREY/METEORITE GREY. REF. MO3599
MOSAIC PRINT V-NECK PULLOVER. 100% CASHMERE, 4 PLY. COLOUR: TURKISH DELIGHT PINK. REF. MO3522
ON THE LEFT: **CARDIGAN WITH POCKETS.** 100% CASHMERE, 4 PLY. COLOUR: VERMILION. REF. MO3568
RIBBED LONG SOCKS. 96% CASHMERE 4% ELASTANE, 4 PLY. COLOUR: SILVER GREY. REF. AK468



ON THE RIGHT: **SHORT-SLEEVED LONG DRESS**. 100% CASHMERE, 4 PLY. COLOUR: OAT BEIGE. REF. MO2897
LONG PONCHO. 100% CASHMERE, 4 PLY. COLOUR: OAT BEIGE. REF. AK222 - **OFF-GAUGE TRIANGLE**. 100% CASHMERE, 4 PLY. COLOUR: VERMILION. REF. AK485
CABLES ROUND NECK PULLOVER. 100% CASHMERE, 4 PLY. COLOUR: ROPE. REF. MO3601 - **DOUBLE-FACED COAT**. 90% WOOL 10% CASHMERE
 LINING: 55% POLYESTER 45% VISCOSE. COLOUR: BLACK. REF. MT115 - **TARTAN WEAVE STOLE**. 80% WOOL 20% CASHMERE, 2 EXTRAFINE PLY
 COLOUR: ROPE. REF. A772 - **SAILOR HAT**. 50% CASHMERE 50% WOOL, 4 PLY. COLOUR: NAVY BLUE. REF. AK465

ON THE LEFT: **STRAIGHT SHIRT WITH POCKET**. 100% COTTON. COLOUR: WHITE. REF. CS205
LOOSE CARDIGAN WITH POCKETS. 100% CASHMERE, 4 PLY. COLOUR: OAT BEIGE. REF. MO3115 - **TIE BELT**. 100% LEATHER. COLOUR: BLACK. REF. CE37



ON THE RIGHT: **SHORT-SLEEVED LONG DRESS**. 100% CASHMERE, 4 PLY. COLOUR: ZURICH GREEN. REF. MO2897
RIBBED TURTLENECK BOLERO. 100% CASHMERE, 4 PLY. COLOUR: ZURICH GREEN. REF. AK472
ON THE LEFT: **ABSTRACT PRINT V-NECK PULLOVER**. 100% CASHMERE, 2 PLY. COLOUR: ZURICH GREEN. REF. MO3510
FRINGED PONCHO. 100% CASHMERE. COLOUR: CARAMEL BROWN. REF. A270
SNOOD WITH DRAWSTRINGS. 100% CASHMERE, 10 PLY. COLOUR: OAT BEIGE. REF. AK477



ON THE RIGHT: **POINTELLE CARDIGAN**. 100% CASHMERE, 2 PLY. COLOUR: AUTUMN WHITE. REF. MO3470 - **MILANO MIDI SKIRT**. 80% PIMA COTTON 14% CASHMERE 6% ELASTANE, 4 EXTRAFINE PLY. COLOUR: VICUNA. REF. MO3468 - **POINTELLE SOCKS**. 94% CASHMERE 6% ELASTANE, 2 PLY. COLOUR: AUTUMN WHITE. REF. AK495

ON THE LEFT: **GILET WITH DETACHABLE SLEEVES**. 100% CASHMERE, 4 PLY. COLOUR: CARAMEL BROWN. REF. MO3554 - **TARTAN JACQUARD WRAPOVER SKIRT**. 57% WOOL 43% CASHMERE, 4 PLY. COLOUR: OAT BEIGE. REF. MO3555 - **FITTED RIBBED SNOOD**. 100% CASHMERE, 12 PLY. COLOUR: VERMILION. REF. AK429
CLASSIC ROUND NECK PULLOVER. 100% CASHMERE, 2 PLY. COLOUR: GOLDEN YELLOW. REF. MO10N - **CLASSIC SCARF**. 100% CASHMERE. COLOUR: SILVER GREY. REF. A1B
TARTAN PRINT ROUND NECK PULLOVER. 100% CASHMERE, 4 PLY. COLOUR: AUTUMN WHITE. REF. MO3507



Wide perspective

SEAMLESS EXTRAFINE BALLERINA NECKLINE PULLOVER. 100% CASHMERE, 2 EXTRAFINE PLY. COLOUR: BLACK. REF. MO3455



RIBBED HIGH NECK JACKET. 50% CASHMERE 50% WOOL, 4 PLY. COLOUR: VICUNA. REF. MO3583
PLAIN KNIT V-NECK PULLOVER. 70% CASHMERE 30% SILK, 2 EXTRAFINE PLY. COLOUR: NAVY BLUE. REF. MO3571



SLANTED RIB ROUND NECK PULLOVER. 100% CASHMERE, 2 PLY. COLOUR: VICUNA. REF. MO3589
CASUAL TROUSERS. 100% CASHMERE, 2 PLY. COLOUR: SILVER GREY. REF. MO3440
OFF-GAUGE STOLE. 100% CASHMERE, 5 PLY. COLOUR: SILVER GREY. REF. AK177



PLAIN KNIT ROUND NECK PULLOVER. 70% CASHMERE 30% SILK, 2 EXTRAFINE PLY. COLOUR: VICUNA. REF. MO3572
PLAIN KNIT CARDIGAN. 70% CASHMERE 30% SILK, 2 EXTRAFINE PLY. COLOUR: VICUNA. REF. MO3437
ZIP-UP TEDDY JACKET WITH SUEDE EFFECT TRIMS. 100% CASHMERE, 6 PLY. COLOUR: BLACK. REF. MO3585



REVERSIBLE SLEEVELESS DOWN JACKET. OUTSIDE: 100% CASHMERE - INSIDE: 50% CASHMERE 50% WOOL
WADDING: 100% POLYESTER. COLOUR: NAVY BLUE. REF. MT127
PLAIN KNIT BUTTONED HIGH NECK PULLOVER. 70% CASHMERE 30% SILK, 2 EXTRAFINE PLY. COLOUR: BLACKTHORN. REF. MO3471



CLASSIC ROUND NECK PULLOVER. 100% CASHMERE, 2 PLY. COLOUR: METEORITE GREY. REF. MO10N
REVERSIBLE SLEEVELESS DOWN JACKET. OUTSIDE: 100% CASHMERE - INSIDE: 50% CASHMERE 50% WOOL
WADDING: 100% POLYESTER. COLOUR: NAVY BLUE. REF. MT127



SLEEVELESS CROPPED ROUND NECK PULLOVER. 100% CASHMERE, 4 PLY. COLOUR: CARAMEL BROWN. REF. MO3569
RAGLAN-SLEEVED CARDIGAN. 100% CASHMERE, 4 PLY. COLOUR: CARAMEL BROWN. REF. MO3114
MINI FRINGED SQUARE SCARF. 100% CASHMERE, 2 EXTRAFINE PLY. COLOUR: BLACK. REF. A793 - **TIE BELT.** 100% LEATHER. COLOUR: BLACK. REF. CE37



EXTRAFINE ZIP-UP POLO SHIRT. 69% WOOL 31% CASHMERE, 2 EXTRAFINE PLY. COLOUR: BLACK. REF. MO3584
DOUBLE-FACED BLAZER. 90% WOOL 10% CASHMERE - LINING: 55% POLYESTER 45% VISCOSE. COLOUR: NAVY BLUE. REF. MT125



BELTED SLEEVELESS COSY JACKET. 100% CASHMERE, 2 PLY. COLOUR: AUTUMN WHITE. REF. MO3454
RIBBED TEDDY JACKET. 100% CASHMERE, 4 PLY. COLOUR: AUTUMN WHITE. REF. MO3552 - **STOLE.** 100% CASHMERE. COLOUR: SILVER GREY. REF. A3

A breeze of freedom

RESOLUTELY OUTDOORSY, THIS SEASON'S WARDROBE IS ENHANCED BY WARM, COMFORTABLE ACCESSORIES TO SLIP ON JUST BEFORE A WALK IN THE FRESH AIR.



CLASSIC SCARF. 100% CASHMERE. COLOURS: ROBIN RED, SILVER GREY AND OAT BEIGE. REF. A1B
DOUBLE-FACED SCARF. 100% CASHMERE. COLOUR: CARAMEL BROWN/BLACKTHORN. REF. A2



ON THE RIGHT: **CASHMERE VOILE STOLE**. 100% CASHMERE, 2 EXTRAFINE PLY. COLOUR: GOJI. REF. A12
ON THE LEFT: **DOUBLE-FACED BLAZER**. 90% WOOL 10% CASHMERE - LINING: 55% POLYESTER 45% VISCOSE. COLOUR: NAVY BLUE. REF. MT125



ON THE RIGHT: **NEO TARTAN PRINT SQUARE SCARF**. 100% CASHMERE, 2 EXTRAFINE PLY. COLOUR: PIGMENT BLUE. REF. A773
DENIM CAP. 65% COTTON 35% LINEN. COLOUR: DENIM BLUE. REF. A798
ON THE LEFT: **RIBBED STOLE**. 100% CASHMERE, 2 PLY. COLOUR: PIGMENT BLUE. REF. AK481

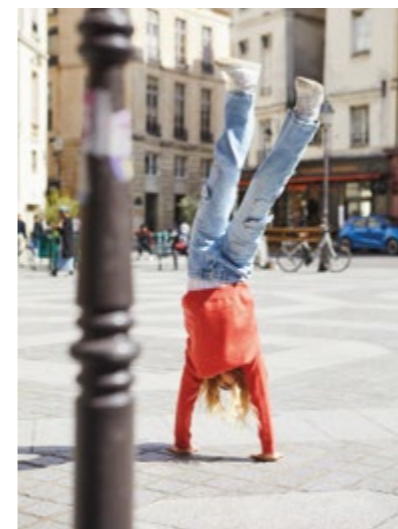


ON THE RIGHT: **ARTICHOKES PRINT SQUARE SCARF**. 100% CASHMERE, 2 EXTRAFINE PLY. COLOUR: CARAMEL BROWN. REF. A764
ON THE LEFT: **FITTED RIBBED SNOOD**. 100% CASHMERE, 12 PLY.
COLOURS: GOLDEN YELLOW, GOJI, CHALET, FENNEL, VICUNA AND ROBIN RED. REF. AK429

Free WEDNESDAY

A wardrobe for PLAYING, EXPLORING, having fun... So that children can GROW UP in full freedom.

Comfort and softness. Just like their parents, children can also enjoy the pleasure of pulling on a Bompard cashmere. Our teams have specially designed a collection of pieces to suit to their hectic daily lives. Pleasant, hardwearing and easy to wear, they include sweatshirts, round-neck jumpers and turtleneck knits, lined with gloves, hats and all-terrain ski masks. These essentials come in a timeless palette of colours with a few pop references so that they're easy to find a place for in your wardrobe, and easy to slip on when you jump out of bed.



ON THE RIGHT: **CHILD SWEATSHIRT.** 50% CASHMERE 50% WOOL, 2 PLY. COLOUR: GOJI. REF. B95
CHILD HAT. 100% CASHMERE, 4 PLY COLOUR: MARLOW. REF. B14
CHILD ZIP-UP HOODIE. 100% CASHMERE, 2 PLY COLOUR: MARLOW. REF. B53
CHILD HAT. 100% CASHMERE, 4 PLY COLOUR: MARLOW. REF. B14
CHILD SWEATSHIRT. 50% CASHMERE 50% WOOL, 2 PLY COLOUR: JAY. REF. B95

ON THE LEFT: **CHILD SWEATSHIRT.** 50% CASHMERE 50% WOOL, 2 PLY. COLOURS: JAY AND GOJI. REF. B95
CHILD HAT. 100% CASHMERE, 4 PLY COLOUR: GOJI. REF. B14
CHILD ZIP-UP HOODIE. 100% CASHMERE, 2 PLY COLOUR: MARLOW. REF. B53

WORKSHOP

REPAIR

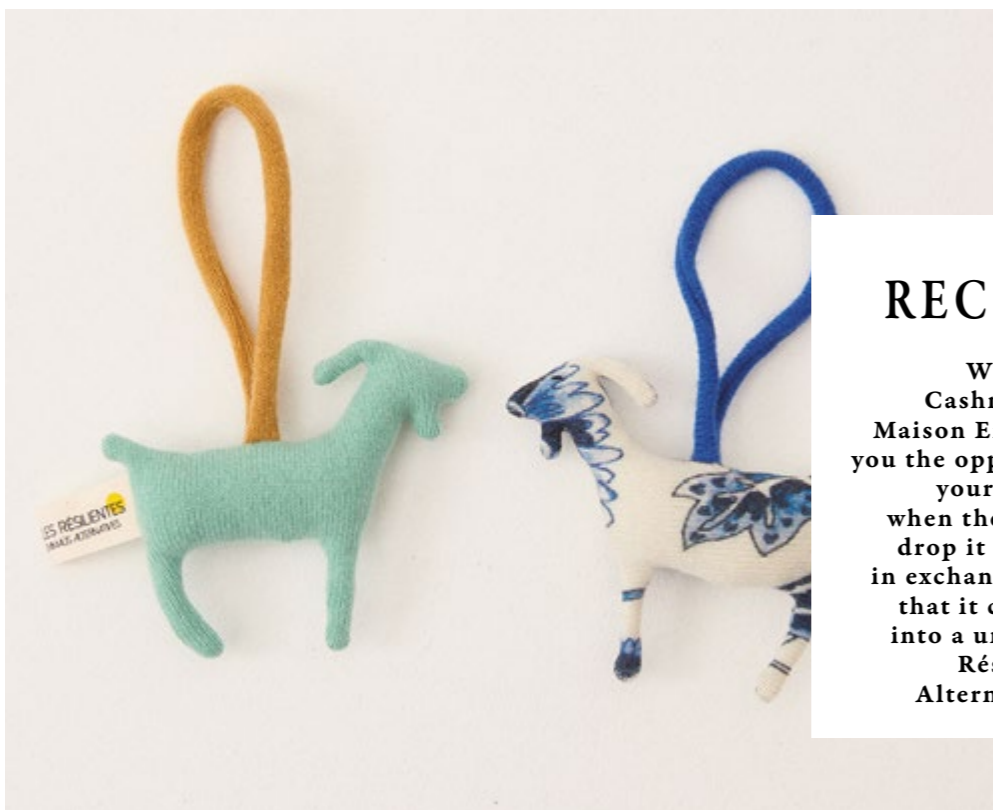
A Parisian workshop dedicated to the well-being of your favourite cashmeres. Like magicians, the experts in our workshop will take care of each damaged jumper or accessory and repair the stitches ply by ply using their unique expertise. Our repair workshop not only gives your garments a new lease of life, it also helps limit the environmental impact of manufacturing.



UPCYCLING

RECREATING

With our «Long Life Cashmere» programme, Maison Eric Bompard offers you the opportunity to return your jumper to crafters when the time comes, or to drop it off at the boutique in exchange for a voucher so that it can be transformed into a unique object by the Résilientes x Emmaüs Alternatives association.



BABY LOVE

A line of BABY ESSENTIALS that combine COMFORT, ELEGANCE AND SOFTNESS.

What if your little ones could also enjoy the softness of Bompard creations? With this in mind, at Maison Bompard we have created a new collection entirely dedicated to babies, with cashmere pieces specially designed for the 3-18 month age group. Cosy pyjamas, a cardigan in pastel shades, a blanket for those first few months (and beyond)... Made from hypoallergenic, lanolinfree cashmere suited to children's delicate skin, these unisex creations reflect Eric Bompard's expertise as well as our taste for quality pieces that span the seasons and last a lifetime.

BABY CARDIGAN. 100% CASHMERE, 2 PLY
COLOUR: SOFT BLUE. REF. B91
NEWBORN BEANIE. 100% CASHMERE, 4 PLY
COLOUR: AUTUMN WHITE. REF. B14N
KNITTED BLANKET. 100% CASHMERE, 8 PLY
COLOUR: SOFT BLUE. REF. B28

BABY HOODED CARDIGAN. 100% CASHMERE, 8 PLY
COLOUR: AUTUMN WHITE. REF. B77
BABY TROUSERS. 100% CASHMERE, 2 PLY
COLOUR: SILVER GREY. REF. B149
KNITTED BLANKET. 100% CASHMERE, 8 PLY
COLOUR: SOFT BLUE. REF. B28



WHERE WILL YOU TAKE YOUR BOMPARD?



HOTEL

VAL D'ISÈRE LE BLIZZARD

A veritable institution in Val d'Isère, this chalet with its authentic, family atmosphere is the perfect place to spend some time at the foot of the slopes - just make sure you pack your Bompard twist jumper.

STRIPED HIGH NECK ZIP-UP JACKET
70% CASHMERE 30% SILK, 2 PLY
COLOUR: NAVY BLUE. REF. MO3624

WHERE WILL YOU TAKE YOUR BOMPARD?



HOTEL

PORTOFINO SPLENDIDO MARE

The Splendido Mare hotel in Portofino has been completely redesigned by the interior design duo Festen. The result is a timeless atmosphere steeped in the city's nautical past, and an ideal base from which to explore the Italian coast.

RIBBED TURTLENECK BOLERO, 100% CASHMERE, 4 PLY
COLOUR: ZÜRICH GREEN. REF. AK472



RESTAURANT

PARIS CRAVAN

Cravan is unveiling a new venue with not one but three cocktail bars spread over four floors, located at 165 Boulevard Saint-Germain. In addition to its innovative and unique menu, the venue also houses a Rizzoli NY bookshop and an open-air rooftop cinema.

FLARED LONG SKIRT WITH BUTTONS, 70% CASHMERE 30% SILK, 2 PLY
COLOUR: BLACKTHORN. REF. MO3172

RESTAURANT

SAINT-VRAIN LE DOYENNÉ

In Essonne, chefs James Henry and Shaun Kelly have opened a restaurant almost exclusively supplied with fruit and vegetables from their farm. After a delicious meal, spend the night in one of the ten tastefully renovated guest rooms.

HOUNDSTOOTH JACQUARD JACKET, 100% CASHMERE, 8 PLY
COLOUR: OAT BEIGE/CHALET. REF. MO3532



RESTAURANT

ROQUEBRUNE LOULOU PIRATE

A vast fisherman's hut set flush against the rocks between Monaco and Menton - this is the setting for Loulou Pirate, a restaurant where you can meet friends, saunter slowly or dance away, with all the spirit of the 1970s French Riviera.

SHORT-SLEEVED LONG DRESS, 100% CASHMERE, 4 PLY
COLOUR: ZÜRICH GREEN. REF. MO2897



CREDITS FOR LE DOYENNÉ: LUKE BURGESS, MARINE BILLET



HOTEL

SWITZERLAND DREI BERGE

Facing the Swiss mountains of Eiger, Mönch and Jungfrau, the Hotel Drei Berge has been given a new lease of life by the creative Ramdane Touhami. Enjoy your outdoor activities in the tranquility of the mountains, your Bompard jumper casually draped around your shoulders.

ABSOLU BOMPARD CAPSULE COLLECTION:
CABLES DOUBLE-FACED ZIPPED TEDDY
100% CASHMERE, 8 PLY. COLOUR: ECRU. REF. MO3282

CARING FOR YOUR CASHMERE



- 1** Hand wash in cold water or machine wash between 0 and 20°C at a maximum of 400 rpm. Wash with two or three other garments of the same colour.
- 2** Use two teaspoons of cashmere shampoo for each wash. Do not use fabric softener.
- 3** Do not leave your Bompard jumper to soak. Do not wring your jumper out. Leave it to dry flat on a towel away from light.
- 4** Iron on the reverse side on a low setting.
- 5** Run a special cashmere comb through your jumper between washes to remove any lint.

THE REPAIR SERVICE

Because your Eric Bompard jumper is made to last, it will need some care and repairs over the years. Visit a Bompard shop.

ONLINE SHOP
www.eric-bompard.com

DISCOVER OUR NEW LOOKS
INSTAGRAM @ericbompard

MAIL ORDER

Call us: + 33 (0)1 40 12 00 40
Email us: Eric Bompard VAD
22 Rue Louis Blanc 93585 - Saint-Ouen Cedex - France

FRANCE

- Aix-en-Provence**
12 rue de la Glacière
13100 Aix-en-Provence
Tel: +33 (0)4 42 27 32 15
- Biarritz**
15 Place Georges Clemenceau
64200 Biarritz
Tel: +33 (0)5 59 23 65 42
- Bordeaux**
25 rue des Remparts
33000 Bordeaux
Tel: +33 (0)5 56 01 25 24
- Boulogne-Billancourt**
92 boulevard Jean Jaurès
92100 Boulogne-Billancourt
Tel: +33 (0)1 40 92 83 82
- Cannes**
26 rue du Commandant André
06400 Cannes
Tel: +33 (0)4 93 39 08 57
- Chamonix**
225 rue du Docteur Paccard
74400 Chamonix
Tel: +33 (0)4 50 47 13 17
- Clermont-Ferrand**
2 rue Blatin
63000 Clermont-Ferrand
Tel: +33 (0)4 73 16 77 30
- Courchevel**
Galerie Espace Diamant
73120 Courchevel 1850
Tel: +33 (0)4 79 08 39 45
- Deauville**
Rue du Casino
14800 Deauville
Tel: +33 (0)2 31 87 01 07
- Dijon**
Hôtel de Rochefort
52 rue des Forges
21000 Dijon
Tel: +33 (0)3 80 34 16 79
- Grenoble**
10 rue Clôt Bey
38000 Grenoble
Tel: +33 (0)4 76 43 75 15
- La Rochelle**
39 rue Saint Yon
17000 La Rochelle
Tel: +33 (0)5 46 34 17 55
- Le Touquet-Paris-Plage**
11 avenue Saint-Jean
62520 Le Touquet-Paris-Plage
Tel: +33 (0)1 49 48 97 41
- Levallois-Perret**
37 rue du Président Wilson
92300 Levallois-Perret
Tel: +33 (0)1 41 06 10 85
- Lille**
23 place du Théâtre
59800 Lille
Tel: +33 (0)3 20 51 43 71
- Lyon 2nd**
54 rue du Président Edouard Herriot
69002 Lyon
Tel: +33 (0)4 78 79 04 03
- Lyon 6th**
41 cours Franklin Roosevelt
69006 Lyon
Tel: +33 (0)4 78 17 24 49
- Marne-la-Vallée**
La Vallée Village
3 cours de la Garonne
77700 Serris
Tel: +33 (0)1 61 10 00 47
- Marseille**
113 rue Paradis
13006 Marseille
Tel: +33 (0)4 91 57 11 05
- Megève**
24 rue Ambroise Martin
74120 Megève
Tel: +33 (0)4 50 96 21 84
- Metz**
17bis En Fournirue
57000 Metz
Tel: +33 (0)3 87 75 08 38
- Montpellier**
18 rue de l'Argenterie
34000 Montpellier
Tel: +33 (0)4 67 66 01 38
- Nancy**
17 rue des Dominicains
54000 Nancy
Tel: +33 (0)3 83 91 49 51
- Nantes**
10 rue de la Fosse
44000 Nantes
Tel: +33 (0)2 40 48 26 28
- Neuilly-sur-Seine**
13bis rue de Chartres
92200 Neuilly-sur-Seine
Tel: +33 (0)1 47 47 76 56
- Nice**
4 rue Longchamp
06000 Nice
Tel: +33 (0)4 93 16 07 49
- Nîmes**
15 rue du Général Perrier
30000 Nîmes
Tel: +33 (0)4 66 40 79 75
- Orléans**
18 rue Charles Sanglier
45000 Orléans
Tel: +33 (0)2 38 54 88 36
- Parly II**
Printemps, CC Parly 2
78150 Le Chesnay
Tel: +33 (0)1 39 54 35 62
- Rennes**
1 rue de Clisson
35000 Rennes
Tel: +33 (0)2 99 78 22 08
- Rouen**
16 rue aux Juifs
76000 Rouen
Tel: +33 (0)2 32 12 00 85
- Saint-Germain-en-Laye**
1/3 rue de Paris
78100 Saint-Germain-en-Laye
Tel: +33 (0)1 34 51 65 09
- Strasbourg**
1 rue des Orfèvres
67000 Strasbourg
Tel: +33 (0)3 88 24 20 97
- Toulouse**
17 rue Antonin Mercier
31000 Toulouse
Tel: +33 (0)5 61 12 05 82
- Tours**
10 rue des Halles
37000 Tours
Tel: +33 (0)2 47 24 28 36

- Val d'Isère**
Résidence Cœur de Val
73150 Val d'Isère
Tel: +33 (0)4 79 22 75 94
- Versailles**
19 rue de la Paroisse
78000 Versailles
Tel: +33 (0)1 39 55 78 90
- Villefontaine**
The Village Outlet
Parc du Couvent
38090 Villefontaine
Tel: +33 (0)4 74 94 73 59
- Paris 4th**
14 rue de Sévigné
75004 Paris
Tel: +33 (0)1 48 04 02 00
- 44 rue Vieille du Temple
75004 Paris
Tel: +33 (0)1 42 74 84 71
- Paris 6th**
26 rue Vavin
75006 Paris
Tel: +33 (0)1 46 33 23 31
- Paris 7th**
31 rue du Bac
75007 Paris
Tel: +33 (0)1 40 20 11 41
- Le Bon Marché**
Women / Men
24 rue de Sèvres
75007 Paris
Tel: +33 (0)1 43 27 65 47
and +33 (0)1 44 39 80 00
- Paris 8th**
75 boulevard Haussmann
75008 Paris
Tel: +33 (0)1 42 68 00 73
- Village Royal
22 rue Boissy d'Anglas
75008 Paris
Tel: +33 (0)1 42 68 32 16
- Paris 9th**
1 rue Scribe
75009 Paris
Tel: +33 (0)1 45 22 75 50
- Galeries Lafayette**
40 boulevard Haussmann
75009 Paris
Tel: +33 (0)1 45 26 71 04
- Printemps Haussmann**
Women / Men
64 boulevard Haussmann
75009 Paris
Tel: +33 (0)1 42 82 52 59
and +33 (0)1 42 82 45 32
- Paris 16th**
17 rue Gustave Courbet
75016 Paris
Tel: +33 (0)1 45 05 90 80
- 6 rue François Ponsard
75016 Paris
Tel: +33 (0)1 45 27 14 47
- Paris 17th**
81 rue Jouffroy d'Abbans
75017 Paris
Tel: +33 (0)1 43 80 88 88
- 42 avenue des Ternes
75017 Paris
Tel: +33 (0)1 44 09 04 94

BELGIUM

- Anvers**
Rue Léopold 17
2000 Anvers
Tel: +32 (0)3 232 85 75
- Bruxelles**
Boulevard de Waterloo 14
1000 Bruxelles
Tel: +32 (0)2 513 56 23
- Knokke-le-Zoute**
Rue Antoine Bréart 13
8300 Knokke-le-Zoute
Tel: +32 (0)5 062 20 44

LUXEMBOURG

- Luxembourg**
17 rue Philippe II
L-2340 Luxembourg
Tel: +352 (0)2 647 86 27

SWITZERLAND

- Genève**
7 rue du Vieux Collège
1204 Genève
Tel: +41 (0)2 310 96 16
- Lausanne**
4 rue de la Paix
1003 Lausanne
Tel: +41 (0)21 312 69 23
- Zurich**
Kappelergrasse 13
8001 Zurich
Tel: +41 (0)43 497 39 13

GERMANY

- Düsseldorf**
Schadowplatz 11
40212 Düsseldorf
Tel: +49 (0)211 323 83 05

AUSTRIA

- Vienne**
Seilergrasse 5
1010 Vienne
Tel: +43 (0)1 971 54 77

ENGLAND

- London**
29 King's Road
London SW3 4RP
Tel: +44 (0)20 7730 9826
- London - Hampstead**
58 Hampstead High St
London NW3 1QH

ERIC
BOMPARD
PARIS



ERIC BOMPARD.COM



ERIC
BOMPARD
PARIS



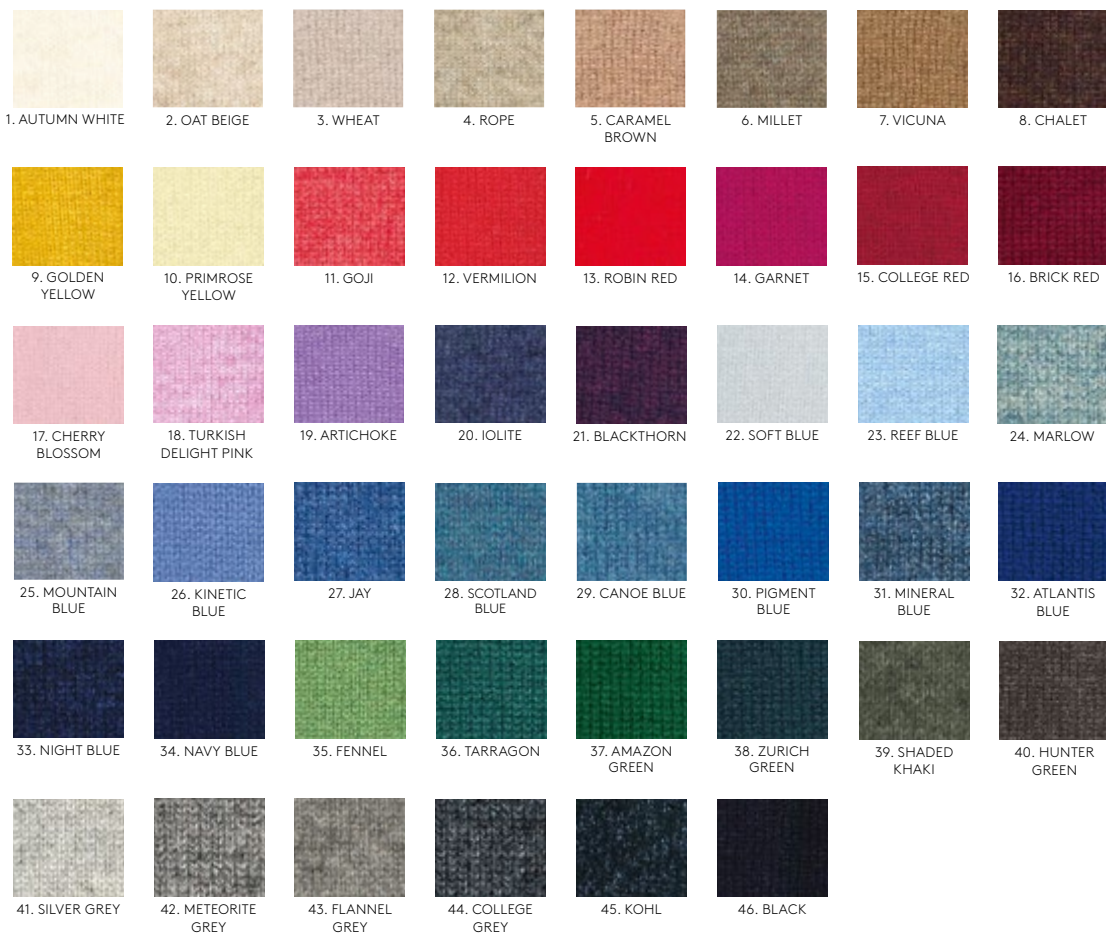
COLLECTION LOOKBOOK

AUTUMN WINTER 2023-2024

COLOUR RANGE

AUTUMN WINTER 2023-2024

PLAIN AND MARL COLOURS



MARLED



THE DONEGAL



OEKO-TEX® LABEL

International label guaranteeing that articles of clothing are free from substances harmful for human health. The articles are tested and certified by an independent body (IFTH). Eric Bompard has been certified OEKO-TEX® since 2015.





WOMEN'S TIMELESS CLASSICS

■ ■ ATELIER BOMPARD CAPSULE COLLECTION

100% CASHMERE, 6 PLY

WARMTH LEVEL: VERY HOT ●●●●

TURTLENECK HIGH NECK ROUND NECKS



LOOSE SEAMLESS TURTLENECK PULLOVER MO3630 - £450
05 34 45

SEAMLESS HIGH NECK PULLOVER MO3614 - £450 P. 40
03 11 34

SEAMLESS LOOSE ROUND NECK PULLOVER MO3629 - £420
03 34

SEAMLESS ROUND NECK PULLOVER MO3615 - £350 P. 42 AND 75
05 31 35 45

STRAIGHT CUTS

100% CASHMERE, 6 PLY

WARMTH LEVEL: VERY HOT ●●●●

TURTLENECK



TURTLENECK PULLOVER MO820 - £370
01 02 11 14 18 24 25 29 34 38 46

WOMEN'S TIMELESS CLASSICS

STRAIGHT CUTS

100% CASHMERE, 4 PLY

WARMTH LEVEL: HOT ●●●

HIGH NECK ROUND NECKS V-NECK CARDIGAN



HIGH NECK PULLOVER MO3570 - £390 - P. 64
05 12 34 35 41 45

ROUND NECK PULLOVER MO2899 - £285
05 18 29 40

SLEEVELESS CROPPED ROUND NECK PULLOVER MO3569 - £220 - P. 2, 62 AND 95
02 05 27 34 46

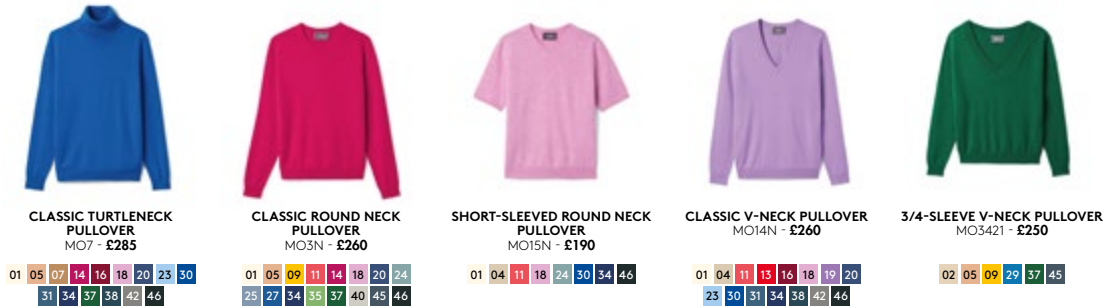
STRAIGHT V-NECK PULLOVER MO2934 - £285
04 11 18 21 24 27 33

RAGLAN-SLEEVED CARDIGAN MO3114 - £310 - P. 95
02 05 21 24 27 34 46

100% CASHMERE, 2 PLY

WARMTH LEVEL: MODERATE ●●●

TURTLENECK ROUND NECKS V-NECKS



CLASSIC TURTLENECK PULLOVER MO7 - £285
01 05 07 14 16 18 20 23 30
31 34 37 38 42 46

CLASSIC ROUND NECK PULLOVER MO3N - £260
01 05 09 11 14 18 20 24
25 27 34 35 37 40 45 46

SHORT-SLEEVED ROUND NECK PULLOVER MO15N - £190
01 04 11 18 24 30 34 46

CLASSIC V-NECK PULLOVER MO14N - £260
01 04 11 13 16 18 19 20
25 30 31 34 38 42 46

3/4-SLEEVE V-NECK PULLOVER MO3421 - £250
02 05 09 29 37 45

CARDIGANS JACKET HOODIE



CLASSIC CARDIGAN MO2N - £310
02 05 08 20 25 27 34 37 41 46

CLASSIC CARDIGAN MO9N - £280
01 04 11 16 18 20
24 30 34 42 45 46

RAGLAN-SLEEVED CARDIGAN MO3113 - £280
01 09 18 30 33 46

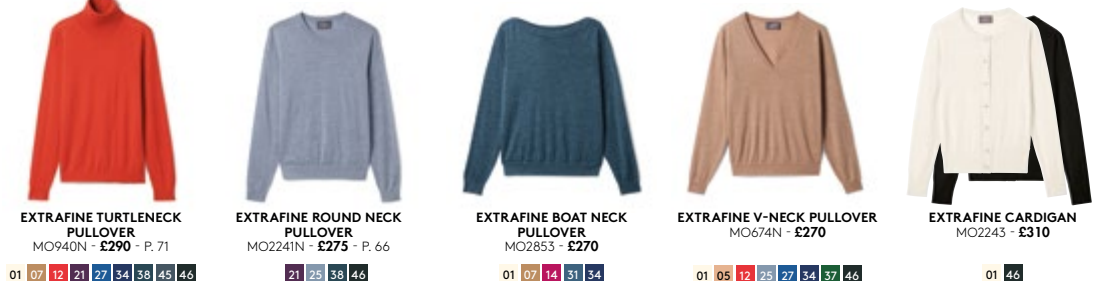
COSY JACKET MO3436 - £390
01 05 18 23 24 27 34 38 46

ZIPPED HOODIE MO1346N - £330 - P. 22
01 05 12 14 18 21
25 30 34 37 41 46

100% CASHMERE, 2 EXTRAFINE PLY

WARMTH LEVEL: LIGHT ●●

TURTLENECK ROUND NECKS V-NECK CARDIGAN



EXTRAFINE TURTLENECK PULLOVER MO940N - £290 - P. 71
01 07 12 21 27 34 38 45 46

EXTRAFINE ROUND NECK PULLOVER MO2241N - £275 - P. 66
21 25 36 46

EXTRAFINE BOAT NECK PULLOVER MO2855 - £270
01 07 14 31 34

EXTRAFINE V-NECK PULLOVER MO674N - £270
01 05 12 25 27 34 37 46

EXTRAFINE CARDIGAN MO2243 - £310
01 46

WOMEN'S TIMELESS CLASSICS

STRAIGHT CUTS

70% CASHMERE 30% SILK,
2 EXTRAFINE PLY

85% PIMA COTTON 15% CASHMERE,
2 EXTRAFINE PLY

WARMTH LEVEL: LIGHT ●

V-NECK



PLAIN KNIT V-NECK PULLOVER
MO3571 - £290 - P. 85

32 34 38

ROUND NECK



ROUND NECK T-SHIRT
MO2966N - £145 - P. 9 AND 11

01 27 46

FITTED CUTS

100% CASHMERE, 2 PLY

WARMTH LEVEL: HOT ●●●

TURTLENECKS



FITTED TURTLENECK PULLOVER
MO253 - £265

01 18 29 42 46



FITTED TURTLENECK PULLOVER
MO3574 - £290

04 12 27 38 46

HIGH NECK



FITTED HIGH NECK PULLOVER
MO3573 - £270

02 19 34 40

ROUND NECK



RAGLAN-SLEEVED ROUND
NECK PULLOVER
MO3575 - £270

11 24 41 46

100% CASHMERE, 2 EXTRAFINE PLY

WARMTH LEVEL: MODERATE ●●

TURTLENECK



SEAMLESS EXTRAFINE
ROLL-NECK
PULLOVER
MO2407 - £330 - P. 25 AND 45

34 46

ROUND NECKS



SEAMLESS EXTRAFINE ROUND
NECK PULLOVER
MO2409 - £320

34 46

VEST TOP



SEAMLESS EXTRAFINE BALLERINA
NECKLINE PULLOVER
MO3455 - £320 - P. 83

46

EXTRAFINE VEST TOP



EXTRAFINE VEST TOP
MO812N - £170

01 46

70% CASHMERE 30% SILK, 2 EXTRAFINE PLY

WARMTH LEVEL: LIGHT ●

ROUND NECK



PLAIN KNIT ROUND NECK PULLOVER
MO3572 - £220 - P. 89

07 32 34

OPEN NECK



PLAIN KNIT POLO SHIRT
MO3628 - £320

14 46

CARDIGAN



PLAIN KNIT CARDIGAN
MO3437 - £330 - P. 89

07 32 34

WOMEN'S TIMELESS CLASSICS

RELAXED FITTED CUTS

100% CASHMERE, 4 PLY

WARMTH LEVEL: HOT ●●●

HIGH NECK



LOOSE HIGH NECK PULLOVER
MO2964 - £320

02 05 11 14 21 24 29 33 46

ROUND NECKS



POINTELLE LINES ROUND NECK
PULLOVER
MO2857 - £290

02 13 33 38 42



LOOSE ROUND NECK PULLOVER
MO2900 - £310

06 34



LOOSE ROUND NECK PULLOVER
MO3567 - £360

04 08 11 20 24 34 46

V-NECKS



LOOSE V-NECK PULLOVER
MO3566 - £360

02 14 20 31 32 40 41 45



OVERSIZED SLEEVELESS
V-NECK PULLOVER
MO3222 - £390

33 46

CARDIGANS



LOOSE CARDIGAN WITH
POCKETS
MO3115 - £475 - P. 76

02 07 25 34 38 45 46



CARDIGAN WITH POCKETS
MO3568 - £420 - P. 74

04 08 12 29 34

100% CASHMERE, 2 PLY

WARMTH LEVEL: MODERATE ●●

TURTLENECK



LOOSE TURTLENECK PULLOVER
WITH HAMMER SLEEVES
MO3565 - £390 - P. 2

02 27 32 34 38 41 44 46

V-NECKS



OVERSIZED 3/4-SLEEVED
V-NECK PULLOVER
MO1921 - £320

02 14 18 20 33 38



LOOSE V-NECK PULLOVER
MO3563 - £320

02 05 12 14 18 21 24 29 32 34 37 40 42 46



SLEEVELESS V-NECK PULLOVER
MO2856 - £195

07 21 29 34 45 46

ROUND NECKS



LOOSE ROUND NECK PULLOVER
MO2936 - £290

02 44 46



OVERSIZED BOAT NECK
PULLOVER
MO3564 - £360

14 21 31 34 38



SLEEVELESS BUTTONED
PULLOVER
MO2975 - £270

34 38 46

85% PIMA COTTON 15% CASHMERE,
2 EXTRAFINE PLY



LOOSE ROUND NECK T-SHIRT
MO3443 - £170 - P. 22

01 38 46

WOMEN'S TIMELESS CLASSICS

SHIRTS



LOOSE SHIRT
100% COTTON
COLOUR: WHITE
CS204 - **£170**
P. 41, 46, 54 AND 69



STRAIGHT SHIRT WITH POCKET
100% COTTON
COLOUR: WHITE
CS205 - **£170**
P. 76

LEGGINGS



SECOND SKIN LEGGINGS
61% SILK 26% CASHMERE
13% ELASTANE, 2 EXTRAFINE PLY
MO1770 - **£230**

34 46

CROPPED TROUSERS



CROPPED TROUSERS WITH POCKETS
100% CASHMERE, 2 PLY
MO2917 - **£390**

07 34 46

SKIRT



LONG FLARED SKIRT
100% CASHMERE, 2 PLY
MO2875 - **£340**

46



NEW PIECES FOR HER

STRAIGHT CUTS

TURTLENECKS



TURTLENECK PULLOVER WITH FANCY STITCHING
100% CASHMERE, 4 PLY
MO3439 - **£450**
P. 13

05 23



MINI HERRINGBONE TURTLENECK PULLOVER
100% CASHMERE, 4 PLY
MO3528 - **£390**
P. 15 AND 29

24 34



HAMMER-SLEEVED TURTLENECK PULLOVER
100% CASHMERE, 2 PLY
MO3544 - **£380**
P. 43

29 35

HIGH NECKS



CABLES HIGH NECK PULLOVER
100% CASHMERE, 6 PLY
MO3509 - **£490**

01 07



HIGH NECK PULLOVER WITH PUFF SLEEVES
100% CASHMERE, 6 PLY
MO3549 - **£470**

M5



FANCY RIB HIGH NECK PULLOVER
100% CASHMERE, 2 PLY
MO3487 - **£330**

13 34



EXTRAFINE PRINTED HIGH NECK PULLOVER
70% CASHMERE 30% SILK,
2 EXTRAFINE PLY
MO3539 - **£320**

24

NEW PIECES FOR HER

STRAIGHT CUTS

ROUND NECKS



CABLES ROUND NECK PULLOVER
100% CASHMERE, 8 PLY
MO3472 - £590
FRONT COVER AND P. 38

07 13



FANCY CABLE BOAT NECK PULLOVER
100% CASHMERE, 6 PLY
MO3560 - £390
P. 32 AND 40

04 31 34



CABLES ROUND NECK PULLOVER
100% CASHMERE, 4 PLY
MO3558 - £390
P. 56

11 34 40



CABLE DETAIL ROUND NECK PULLOVER
100% CASHMERE, 4 PLY
MO3503 - £390

01 16



SLANTED RIB ROUND NECK PULLOVER
100% CASHMERE, 4 PLY
MO3485 - £430
P. 69

01 32



ROUND NECK PULLOVER WITH SUEDE EFFECT INSERTS
100% CASHMERE, 4 PLY
MO3499 - £390
P. 69

21 45



ROUND NECK PULLOVER WITH DENIM INSERTS
100% CASHMERE, 4 PLY
MO3498 - £390
P. 11 AND 50

34



DONEGAL ROUND NECK PULLOVER
100% CASHMERE, 6 PLY
MO3505 - £490
P. 6 AND 26

D2 D3



RAGLAN-SLEEVED ROUND NECK PULLOVER
100% CASHMERE, 6 PLY
MO3517 - £490

02 12 27



ROUND NECK PULLOVER WITH PUFF SLEEVES
100% CASHMERE, 2 PLY
MO3484 - £450
P. 24

12 23



ROUND NECK PULLOVER WITH RIBBED TRIMS
50% CASHMERE 50% YAK, 2 PLY
COLOUR: TAUPE
MO3634 - £380
P. 16



EMBROIDERED ROUND NECK PULLOVER
92% CASHMERE 5% MOHAIR
2% POLYAMIDE 1% WOOL, 12 PLY
MO3561 - £680

05



COLOUR BLOCK POINTELLE ROUND NECK PULLOVER
100% CASHMERE, 2 PLY
MO3456 - £350

D2 D3



HERRINGBONE STRIPED ROUND NECK PULLOVER
78% CASHMERE 22% WOOL, 2 PLY
MO3529 - £320
P. 67

02



SLUB STRIPES ROUND NECK PULLOVER
98% CASHMERE 2% WOOL, 8 PLY
MO3547 - £490
P. 51

3 9



MAXI TARTAN JACQUARD ROUND NECK PULLOVER
78% CASHMERE 22% WOOL, 4 PLY
MO3530 - £390
P. 17

40



TEXTURED STRIPED ROUND NECK PULLOVER
85% SILK 15% CASHMERE,
4 EXTRAFINE PLY
MO3473 - £350

0 3 4



ANIMAL MOTIF ROUND NECK PULLOVER
100% CASHMERE, 4 PLY
MO3562 - £590

4 5



CHECKED PRINT ROUND NECK PULLOVER
100% CASHMERE, 2 PLY
MO3502 - £330
P. 33

0 1



BIRDS PRINT ROUND NECK PULLOVER
100% CASHMERE, 2 PLY
MO3524 - £350

02

NEW PIECES FOR HER

STRAIGHT CUTS

ROUND NECKS



CERAMIC PRINT BOAT NECK PULLOVER
70% CASHMERE 30% SILK, 2 PLY
MO3451 - £320

3 0



EXTRAFINE PRINTED ROUND NECK PULLOVER
70% CASHMERE 30% SILK,
2 EXTRAFINE PLY
MO3445 - £320

01



EXTRAFINE PRINTED ROUND NECK PULLOVER
70% CASHMERE 30% SILK,
2 EXTRAFINE PLY
MO3480 - £290

23



HOUNDSTOOTH JACQUARD ROUND NECK PULLOVER
100% CASHMERE, 4 PLY
MO3531 - £390

02



MOSAIC PRINT T-SHIRT
85% PIMA COTTON
15% CASHMERE, 2 EXTRAFINE PLY
MO3465 - £220

OPEN NECK



LINEN AND SILK EXTRAFINE POLO SHIRT
70% LINEN 30% SILK, 2 PLY
MO3460 - £280

01



POINTELLE ROUND NECK PULLOVER
100% CASHMERE, 2 PLY
MO3449 - £290

01 19



SLEEVELESS QUILTED ROUND NECK
OUTSIDE: 100% CASHMERE - INSIDE: 85% PIMA COTTON 15% CASHMERE
MIDDLE LAYER: 90% WOOL 10% CASHMERE, 2 EXTRAFINE PLY
MO3545 - £320

34

V-NECKS



TEXTURED HERRINGBONE V-NECK PULLOVER
100% CASHMERE, 4 PLY
MO3537 - £430

29



HERRINGBONE AND POINTELLE V-NECK PULLOVER
100% CASHMERE, 2 PLY
MO3481 - £330

02 27



MOSAIC PRINT V-NECK PULLOVER
100% CASHMERE, 4 PLY
MO3522 - £420
P. 75

18



EXTRAFINE V-NECK PULLOVER WITH PUFF SLEEVES
100% CASHMERE, 2 EXTRAFINE PLY
MO2828 - £330

19 46



COLOUR BLOCK SLEEVELESS V-NECK PULLOVER
85% CASHMERE 10% WOOL
5% COTTON, 4 PLY
MO3495 - £295
P. 11 AND 49

33

CARDIGAN



CABLE CARDIGAN
100% CASHMERE, 4 PLY
MO3488 - £390

01 34



BLAZER WITH POCKETS
50% CASHMERE 50% WOOL, 2 PLY
MO3475 - £450
P. 67

13 46



HOUNDSTOOTH JACQUARD JACKET
100% CASHMERE, 8 PLY
MO3532 - £640
P. 9, 48 AND 113

02



QUILTED BUTTONED JACKET
OUTSIDE: 100% CASHMERE
INSIDE: 85% PIMA COTTON
15% CASHMERE
MIDDLE LAYER: 90% WOOL
10% CASHMERE, 2 EXTRAFINE PLY
MO3546 - £520

34



BELTED SLEEVELESS COSY JACKET
100% CASHMERE, 2 PLY
MO3454 - £320
P. 98

01 05

NEW PIECES FOR HER

STRAIGHT CUTS

JACKETS



RIBBED TEDDY JACKET
100% CASHMERE, 4 PLY
MO3552 - **£540**
P. 98

01 34



ZIP-UP JACKET WITH DENIM INSERTS
100% CASHMERE, 4 PLY
MO3497 - **£590**
P. 33

34



REVERSIBLE TECHNICAL JACKET
OUTSIDE: 70% WOOL 30% CASHMERE
INSIDE: 100% POLYAMIDE, 2 PLY
MO3501 - **£420**

46

FITTED CUTS

HIGH NECKS



PLAIN KNIT BUTTONED HIGH NECK PULLOVER
70% CASHMERE 30% SILK,
2 EXTRAFINE PLY
MO3471 - **£320**
P. 91

21 46



ZIP-UP HIGH NECK PULLOVER
100% CASHMERE, 4 PLY
MO3556 - **£490**
P. 30

33 46

ROUND NECK



CABLES SLEEVELESS ROUND NECK PULLOVER
50% CASHMERE 50% WOOL, 12 PLY
MO3559 - **£250**

07

V-NECK



MINI HERRINGBONE V-NECK PULLOVER
100% CASHMERE, 4 PLY
MO3483 - **£360**

21 31

VEST TOPS



CERAMIC PRINT VEST TOP
70% CASHMERE 30% SILK,
2 EXTRAFINE PLY
MO3452 - **£260**

1 9



PLAIN KNIT HIGH NECK VEST TOP
70% CASHMERE 30% SILK,
2 EXTRAFINE PLY
MO3463 - **£190**

19 46

CARDIGANS



PLAIN KNIT CARDIGAN
70% CASHMERE 30% SILK,
2 EXTRAFINE PLY
MO3462 - **£320**

19 46



POINTELLE CARDIGAN
100% CASHMERE, 2 PLY
MO3470 - **£360**
P. 11 AND 81

01

NEW PIECES FOR HER

RELAXED FITTED CUTS

TURTLENECKS



DIAMOND POINTELLE TURTLENECK PULLOVER
100% CASHMERE, 10 PLY
MO3557 - **£590**
P. 24 AND 33

04 34



CABLES TURTLENECK PULLOVER
100% CASHMERE, 8 PLY
MO3533 - **£840**
P. 61

08 25



RAGLAN-SLEEVED TURTLENECK PULLOVER
100% CASHMERE, 6 PLY
MO3525 - **£640**
P. 67

18 31 45



FANCY RIB TURTLENECK PULLOVER
100% CASHMERE, 6 PLY
MO3171 - **£535**
P. 61

12 32 58



RIBBED TURTLENECK PULLOVER
100% CASHMERE, 6 PLY
MO3538 - **£660**

29 46

HIGH NECKS



OVERSIZE TURTLENECK PULLOVER
100% CASHMERE, 4 PLY
MO3506 - **£540**
P. 37

15 46



SLIT TURTLENECK PULLOVER
100% CASHMERE, 4 PLY
MO3520 - **£520**
P. 14

31



HIGH NECK PULLOVER WITH GUERNSEY DETAILS
100% CASHMERE, 4 PLY
MO2994 - **£475**

01 34



SLUB STRIPES HIGH NECK PULLOVER
98% CASHMERE 2% WOOL, 8 PLY
MO3548 - **£610**
P. 14

3 4



HERRINGBONE HIGH NECK PULLOVER
50% CASHMERE 50% WOOL, 4 PLY
MO3519 - **£420**

05 34

ROUND NECKS



TURTLENECK PULLOVER WITH BUTTONS
50% CASHMERE 50% YAK, 2 PLY
COLOUR: TAUPE
MO3654 - **£440**

05 24



RIBBED HIGH NECK PULLOVER
50% CASHMERE 50% YAK, 2 PLY
COLOUR: TAUPE
MO3633 - **£410**
P. 31

11 27



ZIP-NECK PULLOVER WITH SUEDE EFFECT DETAIL
100% CASHMERE, 4 PLY
MO3555 - **£610**

07 45

M1 M6



CHEQUERBOARD CABLES ROUND NECK PULLOVER
100% CASHMERE, 6 PLY
MO3523 - **£550**
P. 64

29

55



CABLES LOOSE ROUND NECK PULLOVER
100% CASHMERE, 4 PLY
MO3551 - **£550**
P. 55

05 35

34



RIBBED ROUND NECK PULLOVER
100% CASHMERE, 4 PLY
MO3518 - **£450**

05 24



PATCHWORK EFFECT ROUND NECK PULLOVER
100% CASHMERE, 6 PLY
MO3504 - **£590**
P. 53

11 27



MARL ROUND NECK PULLOVER
100% CASHMERE, 4 PLY
MO3493 - **£390**

M1 M6



COLOUR BLOCK ROUND NECK PULLOVER
85% CASHMERE 10% WOOL
5% COTTON, 4 PLY
MO3496 - **£590**

55



PATCHWORK ROUND NECK PULLOVER
53% WOOL 23% CASHMERE
24% COTTON, 4 PLY
MO3500 - **£590**

34

NEW PIECES FOR HER

RELAXED FITTED CUTS

ROUND NECKS



TARTAN PRINT ROUND NECK PULLOVER
100% CASHMERE, 4 PLY
MO3507 - **£450**
P. 80

01



ABSTRACT PRINT ROUND NECK PULLOVER
100% CASHMERE, 4 PLY
MO3515 - **£420**

11 32



STRIPED ROUND NECK PULLOVER
100% CASHMERE, 4 PLY
MO3553 - **£450**

02



CASHMERE AND LINEN POINTELLE ROUND NECK PULLOVER
47% CASHMERE 53% LINEN, 4 PLY
MO3444 - **£270**

01 19



CABLES SLEEVELESS ROUND NECK PULLOVER
100% CASHMERE, 2 PLY
MO3469 - **£250**
P. 46 AND 54

20 41

V-NECKS



ARTICHOKE PRINT T-SHIRT
85% PIMA COTTON
15% CASHMERE, 2 EXTRAFINE PLY
MO3450 - **£190**

19



LOOSE V-NECK PULLOVER
100% CASHMERE, 6 PLY
MO3482 - **£420**
P. 28

32 46



FANCY RIB V-NECK PULLOVER
100% CASHMERE, 4 PLY
MO3536 - **£440**
P. 63

18 34



CABLES V-NECK PULLOVER
100% CASHMERE, 2 PLY
MO3474 - **£350**
P. 10

05 20 27



POINTELLE V-NECK PULLOVER
100% CASHMERE, 2 PLY
MO3448 - **£390**

01



V-NECK PULLOVER WITH GUERNSEY DETAIL
100% CASHMERE, 4 PLY
MO3512 - **£420**
P. 31

01 34



ABSTRACT PRINT V-NECK PULLOVER
100% CASHMERE, 2 PLY
MO3510 - **£390**
P. 78

38



ECLIPSE V-NECK PULLOVER
100% CASHMERE, 2 PLY
MO3461 - **£390**

05



FANCY STITCH SLEEVELESS V-NECK PULLOVER
100% CASHMERE, 2 PLY
MO3486 - **£190**
P. 70

38

OPEN NECKS



POLO SHIRT WITH TOPSTITCHED MOTIF
100% CASHMERE, 2 PLY
MO3478 - **£450**

01



FANCY CASHMERE AND SILK POLO SHIRT
85% SILK 15% CASHMERE,
2 EXTRAFINE PLY
MO3453 - **£360**

19



SLEEVELESS POLO SHIRT WITH TOPSTITCHED MOTIF
100% CASHMERE, 2 PLY
MO3476 - **£330**

34



SLEEVELESS GRANDAD-STYLE PULLOVER
100% CASHMERE, 2 PLY
MO3156 - **£270**
P. 65

34 41

NEW PIECES FOR HER

RELAXED FITTED CUTS

CARDIGANS



POINTELLE DETAILS CARDIGAN
100% CASHMERE, 6 PLY
MO3631 - **£590**

02 46



GILET WITH DETACHABLE SLEEVES
100% CASHMERE, 4 PLY
MO3554 - **£580**
P. 80

05



RIBBED CARDIGAN
100% CASHMERE, 2 PLY
MO3447 - **£530**

41 46



RIBBED CARDIGAN
50% CASHMERE 50% YAK, 2 PLY
COLOUR: TAUPE
MO3632 - **£370**
P. 31

42



CABLE OVERSIZED CARDIGAN
100% CASHMERE, 2 PLY
MO3464 - **£320**

SLEEVELESS CARDIGAN WITH POCKETS
100% CASHMERE, 2 PLY
MO3492 - **£420**
P. 19

33

HOODIES



CABLE HOODIE
100% CASHMERE, 4 PLY
MO3542 - **£560**

33



LOOSE HOODIE
100% CASHMERE, 4 PLY
MO3459 - **£520**

09



HOODIE WITH DENIM INSERTS
50% CASHMERE 50% WOOL,
4 PLY
MO3508 - **£550**
P. 18

27



HOODIE WITH SUEDE EFFECT INSERTS
50% CASHMERE 50% WOOL,
4 PLY
MO3511 - **£590**

34

JACKETS



JACKET WITH SUEDE EFFECT TRIMS
100% CASHMERE, 4 PLY
MO3489 - **£610**

34



DOUBLE-FACED QUILTED TEDDY JACKET
OUTSIDE: 64% WOOL 27% CASHMERE
8% POLYAMIDE 1% ELASTANE
INSIDE: 100% POLYAMIDE, 4 PLY
MO3494 - **£640**
FRONT COVER AND 46

46



MILANO JACKET WITH POCKETS
90% WOOL 10% CASHMERE,
4 EXTRAFINE PLY
MO3467 - **£680**
P. 55

02 38



BELTED COSY JACKET
100% CASHMERE, 4 PLY
MO3540 - **£560**
P. 71

34 38

NEW PIECES FOR HER

SHIRTS



LOOSE SHORT-SLEEVED SHIRT
100% COTTON
COLOUR: WHITE
CS206 - **£190**



LOOSE DENIM SHIRT
98% COTTON 2% ELASTANE
COLOUR: DENIM BLUE
CS207 - **£250**
P. 23 AND 38

CYCLING SHORTS



RIBBED CYCLING SHORTS
90% CASHMERE 10% ELASTANE,
2 EXTRAFINE PLY
MO3466 - **£230**

46

SKIRTS



PENCIL SKIRT WITH DARTS
50% CASHMERE 50% WOOL,
2 PLY
MO3514 - **£310**
P. 26

38



TARTAN JACQUARD WRAPOVER SKIRT
57% WOOL 43% CASHMERE, 4 PLY
MO3535 - **£490**
P. 80

02



MILANO MINI SKIRT
48% CASHMERE 48% WOOL
4% ELASTANE, 2 PLY
MO3491 - **£230**
P. 24 AND 54

46



TARTAN JACQUARD MINI SKIRT
60% WOOL 40% CASHMERE,
4 PLY
MO3521 - **£230**
P. 23 AND 40

02 34



MILANO MIDI SKIRT
80% PIMA COTTON 14% CASHMERE
6% ELASTANE,
4 EXTRAFINE PLY
MO3468 - **£350**
P. 81

07 34



MARL FLARED SKIRT
100% CASHMERE, 6 PLY
MO3541 - **£470**
P. 67

M5



HERRINGBONE STRIPED FLARED SKIRT
78% CASHMERE 22% WOOL, 2 PLY
MO3527 - **£430**
P. 29 AND 61

02 34



FLARED LONG SKIRT WITH BUTTONS
70% CASHMERE 30% SILK, 2 PLY
MO3172 - **£440**
P. 18, 45 AND 112

21 34 46



POINTELLE LONG SKIRT
47% CASHMERE 53% LINEN, 4 PLY
MO3458 - **£330**
P. 62

01



FLARED MILANO SKIRT
80% PIMA COTTON 14% CASHMERE
6% ELASTANE, 4 EXTRAFINE PLY
MO3457 - **£420**
P. 33, 37, 67 AND 70

13 38 46

NEW PIECES FOR HER

DRESSES



TURTLENECK DRESS WITH BUTTONED SLEEVES
100% CASHMERE, 4 PLY
MO3526 - **£660**
P. 67

40



SHORT-SLEEVED LONG DRESS
100% CASHMERE, 4 PLY
MO2897 - **£520**
P. 21, 77, 79 AND 112

02 38 46



HIGH NECK LONG DRESS
100% CASHMERE, 2 PLY
MO3490 - **£590**
P. 39

21 46



DRESS WITH GEOMETRIC SLEEVES
100% CASHMERE, 2 PLY
MO3513 - **£460**

14 33



LOOSE DRESS WITH TOPSTITCHED MOTIF
100% CASHMERE, 2 PLY
MO3477 - **£640**

38



TEXTURED STRIPED POLO COLLAR DRESS
85% SILK 15% CASHMERE,
4 EXTRAFINE PLY
MO3479 - **£520**

0 3 4

TROUSERS



CARROT TROUSERS WITH DARTS
90% WOOL 10% CASHMERE
MO3182 - **£475**
P. 65

34



TROUSERS WITH POCKETS
90% WOOL 10% CASHMERE
MO3185 - **£475**
P. 32 AND 41

34



MILANO TROUSERS WITH POCKETS
85% WOOL 10% CASHMERE
5% ELASTANE, 2 PLY
MO3516 - **£550**
P. 19

33



DENIM JEANS
98% COTTON 2% ELASTANE
COLOUR: INDIGO BLUE
CT010 - **£250**
P. 49, 54 AND 56

NEW PIECES FOR HER

COATS



LONG DOUBLE-FACED COAT
90% WOOL 10% CASHMERE
LINING: 55% POLYESTER
45% VISCOSE
MT113 - **£1190**

34



DOUBLE-FACED OVERSIZED COAT
90% WOOL 10% CASHMERE
LINING: 55% POLYESTER
45% VISCOSE
MT112 - **£1190**
P. 41 AND 71

07 34



OVERSIZED QUILTED COAT
OUTSIDE: 64% WOOL
27% CASHMERE 8% POLYAMIDE
1% ELASTANE
INSIDE: 100% POLYAMIDE, 4 PLY
MT121 - **£840**
P. 11 AND 26

34



HERRINGBONE DOUBLE-BREASTED COAT
50% YAK 40% WOOL
10% CASHMERE
LINING: 55% POLYESTER
45% VISCOSE
MT122 - **£1100**
P. 2 AND 41

08



BUTTONED JACKET WITH POCKETS
90% WOOL 10% CASHMERE
MT123 - **£840**
P. 42

07

HOMEWEAR



RIBBED HIGH NECK PULLOVER
100% CASHMERE, 2 PLY
MO3256 - **£410**

46



RIBBED TROUSERS
100% CASHMERE, 2 PLY
MO3255 - **£440**

46



THE WOMEN'S & MEN'S SKI CAPSULE

WOMEN

TURTLENECK



FAIR ISLE JACQUARD TURTLENECK PULLOVER
100% CASHMERE, 12 PLY
MO3620 - **£720**
P. 5 AND 72

02

HIGH NECK



STRIPED PLAIN KNIT ZIP-NECK PULLOVER
70% CASHMERE 30% SILK,
2 EXTRAFINE PLY
MO3621 - **£390**

34

ROUND NECK



FAIR ISLE JACQUARD ROUND NECK PULLOVER
100% CASHMERE, 4 PLY
MO3618 - **£350**
P. 5, 10 AND 73

02

JACKET



STRIPED HIGH NECK ZIP-UP JACKET
70% CASHMERE 30% SILK, 2 PLY
MO3624 - **£490**
P. 112

34

MEN

JACKETS



EXTRAFINE JACKET WITH STRIPED DETAILS
70% CASHMERE 30% SILK,
2 EXTRAFINE PLY
MO3622 - **£460**
P. 10

34



JACKET WITH STRIPED DETAILS
70% CASHMERE 30% SILK, 2 PLY
MO3625 - **£490**

34

HOODIE



HOODIE WITH STRIPED DETAILS
100% CASHMERE, 2 PLY
MO3627 - **£490**

34

TROUSERS



CASUAL TROUSERS WITH STRIPED DETAILS
100% CASHMERE, 2 PLY
MO3626 - **£460**

34

ACCESSORIES

HATS



FAIR ISLE JACQUARD HAT
100% CASHMERE, 14 PLY
AK491 - **£150**

02 34



HAT WITH STRIPED DETAILS
100% CASHMERE, 10 PLY
AK488 - **£150**

34

MITTENS



MITTENS WITH STRIPED DETAILS
100% CASHMERE, 4 PLY
AK487 - **£120**

34



MEN'S TIMELESS CLASSICS

STRAIGHT CUTS

100% CASHMERE, 4 PLY

WARMTH LEVEL: HOT ●●●

TURTLENECK	HIGH NECK	V-NECK	CARDIGAN	TEDDY
				
TURTLENECK PULLOVER MO294 - £450	ZIP-NECK PULLOVER MO1081 - £485	STRAIGHT V-NECK PULLOVER MO3610 - £390	CARDIGAN WITH POCKETS MO3607 - £490	BUTTONED TEDDY JACKET WITH POCKETS MO3608 - £490
01 34 45 46	05 08 21 24 31 34 38 44 45	04 25 27 33 46	04 33 36 42 46	31 34 45

100% CASHMERE, 2 PLY

WARMTH LEVEL: MODERATE ●●

TURTLENECK	HIGH NECKS		
			
CLASSIC TURTLENECK PULLOVER MO8 - £330	ZIP-NECK PULLOVER MO1372 - £380 - P. 2 AND 33	TWO-TONE HIGH NECK PULLOVER MO378 - £410	HIGH NECK PULLOVER MO3609 - £330
01 02 04 05 12 20 24 25 27 30 31 34 36 41 44 45 46	02 04 07 11 24 25 27 33 34 40 42 44 45 46	3 3 4 0 4 5	07 27 33 38 42 46

ROUND NECKS		
		
CLASSIC ROUND NECK PULLOVER MO10N - £310 - P. 80 AND 93	HAMMER-SLEEVED ROUND NECK PULLOVER MO3612 - £320	SLEEVELESS ROUND NECK PULLOVER MO3611 - £210
01 05 08 09 11 21 24 25 27 30 34 35 38 40 41 42 44 46	02 31 33 36 46	07 34 44 46



V-NECKS	OPEN NECK
	
HAMMER-SLEEVED V-NECK PULLOVER MO4N - £310 - P. 38	BUTTONED POLO SHIRT MO1079 - £360
11 24 33 44 46	02 07 31 34 44 46

MEN'S TIMELESS CLASSICS

ATELIER BOMPARD CAPSULE COLLECTION

100% CASHMERE, 6 PLY

WARMTH LEVEL: VERY HOT ●●●●

TURTLENECK	ROUND NECK
	
SEAMLESS TURTLENECK PULLOVER MO3616 - £490 P. 13 AND 68	SEAMLESS ROUND NECK PULLOVER MO3617 - £420 P. 10 AND 35
05 34 35	11 31 45

MEN'S TIMELESS CLASSICS

STRAIGHT CUTS

100% CASHMERE, 2 PLY

WARMTH LEVEL: MODERATE ●●

CARDIGAN



CLASSIC CARDIGAN
MO5 - £345

05 20 27 31 34 40 45

HOODIE



ZIPPED HOODIE
MO1082 - £420

04 25 27 31 34 38 41 42 45 46

JACKET



REVERSIBLE ZIP-UP JACKET
MO1083 - £720

04 33 34

TEDDY



ZIPPED TEDDY
MO1609 - £395

05 34 40 42 46

100% CASHMERE, 2 EXTRAFINE PLY

WARMTH LEVEL: LIGHT ●

85% PIMA COTTON 15% CASHMERE,
2 EXTRAFINE PLY

TURTLENECK



EXTRAFINE TURTLENECK PULLOVER
MO610 - £370

13 25 31 34 38 42 46

HIGH NECK



EXTRAFINE ZIP-NECK PULLOVER
MO1838N - £380

27 34 40

V-NECK



EXTRAFINE V-NECK PULLOVER
MO891 - £330

07 21 31 34 42 45 46

ROUND NECKS



EXTRAFINE ROUND NECK PULLOVER
MO609 - £330

13 24 25 27 34 42 46



ROUND NECK T-SHIRT
MO3071N - £170 - P. 48 AND 54

01 38 46

SHIRT



POPLIN SHIRT
100% COTTON
COLOUR: WHITE
CS209 - £190

HOMWEAR



CASUAL HOODIE
100% CASHMERE, 2 PLY
MO3581 - £440

05 41 46



CASUAL TROUSERS
100% CASHMERE, 2 PLY
MO3440 - £410
P. 63 AND 86

05 41 46



NEW PIECES FOR HIM

STRAIGHT CUTS

TURTLENECKS



RIBBED TURTLENECK PULLOVER
100% CASHMERE, 4 PLY
MO3595 - £580

33 40



HERRINGBONE TURTLENECK PULLOVER
100% CASHMERE, 2 PLY
MO3606 - £390

46

HIGH NECKS



MARL ZIP-NECK PULLOVER
100% CASHMERE, 8 PLY
MO2945 - £575

M9 M10



FANCY CABLE ZIP-NECK PULLOVER
100% CASHMERE, 6 PLY
MO3597 - £590
P. 5 AND 72

33 46



RIBBED MARL ZIP-NECK PULLOVER
100% CASHMERE, 4 PLY
MO3598 - £590
P. 54

M2



ZIP-NECK PULLOVER WITH SUEDE EFFECT DETAILS
100% CASHMERE, 4 PLY
MO3596 - £490
P. 2 AND 51

02 45



ZIP-NECK PULLOVER WITH SUEDE EFFECT DETAILS
100% CASHMERE, 4 PLY
MO3594 - £490
P. 22

34 40



SHAWL COLLAR PULLOVER
100% CASHMERE, 4 PLY
MO3600 - £490
P. 52

24 45

NEW PIECES FOR HIM

STRAIGHT CUTS

ROUND NECKS



ROUND NECK PULLOVER WITH SUEDE EFFECT ELBOW PATCHES
50% CASHMERE 50% WOOL, 6 PLY
MO2949 - **£340**
P. 54 AND 56

34 40 45



CABLES ROUND NECK PULLOVER
100% CASHMERE, 4 PLY
MO3601 - **£460**
P. 77

04 34



MARL ROUND NECK PULLOVER WITH ELBOW PATCHES
100% CASHMERE, 4 PLY
MO3586 - **£430**

M4 M7



MARL ROUND NECK PULLOVER
100% CASHMERE, 4 PLY
MO3599 - **£430**
P. 75

M3 M8



DONEGAL ROUND NECK PULLOVER
100% CASHMERE, 4 PLY
MO3605 - **£470**
P. 9 AND 48

D1 D4



RIBBED DETAILS ROUND NECK PULLOVER
100% CASHMERE, 4 PLY
MO3602 - **£450**

34 36 42



MINI HERRINGBONE ROUND NECK PULLOVER
100% CASHMERE, 4 PLY
MO3578 - **£450**

25 46



HERRINGBONE DETAIL ROUND NECK PULLOVER
100% CASHMERE, 2 PLY
MO3590 - **£430**
P. 17, 20 AND BACK COVER

02 27



SLANTED RIB ROUND NECK PULLOVER
100% CASHMERE, 2 PLY
MO3589 - **£430**
P. 86

07 30 46



ROUND NECK PULLOVER WITH SUEDE EFFECT INSERTS
100% CASHMERE, 2 PLY
MO3591 - **£440**
P. 27 AND 52-53

08 34



GUERNSEY STITCH ROUND NECK PULLOVER
58% CASHMERE 42% LINEN, 4 PLY
MO3603 - **£450**

46



ROUND NECK PULLOVER WITH RIBBED TRIMS
50% CASHMERE 50% YAK, 2 PLY
COLOUR: TAUPE
MO3635 - **£380**

25 46



EXTRAFINE ZIP-UP POLO SHIRT
69% WOOL 31% CASHMERE,
2 EXTRAFINE PLY
MO3584 - **£330**
P. 97

25 46



V-NECK PULLOVER WITH GUERNSEY DETAILS
100% CASHMERE, 4 PLY
MO3592 - **£460**

34 38



TEXTURED DIAMONDS V-NECK PULLOVER
100% CASHMERE, 4 PLY
MO3593 - **£460**

31 46

OPEN NECK

V-NECKS

JACKET

TEDDIES



EXTRAFINE V-NECK PULLOVER WITH CONTRASTING COLLAR
71% WOOL 29% CASHMERE,
2 EXTRAFINE PLY
MO3579 - **£290**

34 46



EXTRAFINE TEXTURED CHEQUERBOARD V-NECK PULLOVER
85% PIMA COTTON
15% CASHMERE, 4 EXTRAFINE PLY
MO3580 - **£290**

34



RIBBED HIGH NECK JACKET
50% CASHMERE 50% WOOL,
4 PLY
MO3585 - **£490**
P. 7 AND 85

07 46



BUTTONED TEDDY JACKET WITH SUEDE EFFECT DETAILS
100% CASHMERE, 6 PLY
MO3248 - **£575**

34



ZIP-UP TEDDY JACKET WITH SUEDE EFFECT TRIMS
100% CASHMERE, 6 PLY
MO3585 - **£590**
P. 89

46

NEW PIECES FOR HIM

STRAIGHT CUTS

HOODIE

JACKETS



RIBBED HOODIE
70% COTTON 30% CASHMERE,
4 PLY
MO3576 - **£490**
P. 8, 17 AND 57

30 41



REVERSIBLE TECHNICAL JACKET
OUTSIDE: 70% WOOL 30% CASHMERE
INSIDE: 100% POLYAMIDE, 2 PLY
MO3587 - **£450**
P. 54

46



QUILTED SLEEVELESS JACKET
OUTSIDE: 100% CASHMERE
INSIDE: 85% PIMA COTTON 15% CASHMERE
MIDDLE LAYER: 90% WOOL 10% CASHMERE,
4 EXTRAFINE PLY
MO3201N - **£475**
P. 2

05 46

SHIRTS

JEANS



LOOSE DENIM SHIRT
98% COTTON 2% ELASTANE
COLOUR: DENIM BLUE
CS208 - **£250**
P. 33, 57 AND BACK COVER



DOUBLE-FACED SHIRT
OUTSIDE: 100% CASHMERE
INSIDE: 85% PIMA COTTON
15% CASHMERE, 4 EXTRAFINE PLY
MO3143N - **£575**

34



DENIM JEANS
98% COTTON 2% ELASTANE
COLOUR: INDIGO BLUE
CT011 - **£250**

COATS



DOUBLE-FACED COAT
90% WOOL 10% CASHMERE
LINING: 55% POLYESTER
45% VISCOSE
MT115 - **£940**
P. 51 AND 77

46



DOUBLE-FACED BLAZER
90% WOOL 10% CASHMERE
LINING: 55% POLYESTER
45% VISCOSE
MT125 - **£590**
P. 97 AND 102

34



BUTTONED JACKET WITH POCKETS
90% WOOL 10% CASHMERE
MT124 - **£840**
P. 2, 9 AND 27

34



BUTTONED TEDDY JACKET WITH POCKETS
WOVEN FABRIC: 90% WOOL
10% CASHMERE
KNIT: 100% CASHMERE
LINING: 55% POLYESTER 45% VISCOSE
MT126 - **£780**
P. 48 AND 54

46



REVERSIBLE SLEEVELESS DOWN JACKET
OUTSIDE: 100% CASHMERE
INSIDE: 50% CASHMERE 50% WOOL
WADDING: 100% POLYESTER
MT127 - **£680**
P. 91 AND 93

34



ACCESSORIES

ATELIER BOMPARD CAPSULE COLLECTION

BREASTPLATE SNOODS HAT



SEAMLESS TURTLENECK BIB
100% CASHMERE, 4 PLY
AK443 - £245

05 11 31 34



SEAMLESS RIBBED SNOOD
100% CASHMERE, 4 PLY
AK444 - £255

11 31 45



SEAMLESS RIBBED SNOOD
100% CASHMERE, 4 PLY
AK445 - £210

03 05 34 35 46



SEAMLESS RIBBED HAT
100% CASHMERE, 6 PLY
AK446 - £115

03 05 11 31 34 35 45

CAPS



CAP
90% WOOL 10% CASHMERE
A797 - £245

34



DENIM CAP
65% COTTON 35% LINEN
COLOUR: DENIM BLUE
A798 - £190
P. 54 AND 105

ACCESSORIES

PONCHOS



ZIP-NECK PONCHO
100% CASHMERE, 4 PLY
AK475 - £590
P. 66

04 36 45



TURTLENECK PONCHO
100% CASHMERE, 2 PLY
AK476 - £390

04 33 46



LONG PONCHO WITH ONE SLEEVE
100% CASHMERE, 2 PLY
AK419 - £390

05 31 45 46



TARTAN PONCHO WITH ONE SLEEVE
56% WOOL 44% CASHMERE, 4 PLY
AK494 - £490

34



PATCHWORK PONCHO WITH ONE SLEEVE
53% WOOL 23% CASHMERE
24% COTTON, 4 PLY
AK461 - £490

33

CAPE

BOLERO



FRINGED PONCHO
100% CASHMERE
A270 - £490
P. 78

05 34 46



LONG PONCHO
100% CASHMERE, 4 PLY
AK222 - £335
P. 77

01 02 07 27 34 42 46



PONCHO
100% CASHMERE, 2 PLY
AK57 - £190

01 02 05 14 21 28 29 32
34 38 41 42 46



TURTLENECK CAPE WITH ZIPS
100% CASHMERE, 6 PLY
AK462 - £540

34



RIBBED TURTLENECK BOLERO
100% CASHMERE, 4 PLY
AK472 - £320
P. 21, 79 AND 113

05 38 46

BREASTPLATES



TURTLENECK BIB
100% CASHMERE, 6 PLY
AK432 - £245
P. 15 AND 28

02 29 36 46



CABLE TURTLENECK BIB
100% CASHMERE, 4 PLY
AK466 - £280
P. 55

05 35 46



ZIP-NECK BIB
100% CASHMERE, 8 PLY
AK418 - £290
P. 15

01 07 34 38 46



RIBBED HOODED BIB
50% CASHMERE 50% WOOL, 6 PLY
AK467 - £250
P. 17 AND 40

01 07 34 45

TRIANGLES



OFF-GAUGE TRIANGLE
100% CASHMERE, 4 PLY
AK485 - £310
P. 2, 13, 20 AND 77

12 33 46



TARTAN FRINGED TRIANGLE
100% CASHMERE
A791 - £310

44

BELT



TIE BELT
100% LEATHER
COLOURS: HAVANA AND BLACK
CE37 - £95
P. 45, 55, 64, 76 AND 95

ACCESSORIES

PLAIN STOLE



DIP-DYE STOLE
100% CASHMERE, 10 PLY
AK492 - **£350**

34



OFF-GAUGE STOLE
100% CASHMERE, 5 PLY
AK177 - **£290**
P. 86

02 14 31 34 41 46



RIBBED STOLE
100% CASHMERE, 2 PLY
AK481 - **£320**
P. 9, 42, 48, 54, 71 AND 104

02 11 20 24 30 34 42 46



STOLE
100% CASHMERE
A3 - **£360**
P. 98

01 02 05 07 14 24 25 31
34 38 41 44 46



CHEVRON SELVEDGE STOLE
100% CASHMERE
A184 - **£255**

24 29 33 44



GIANT CASHMERE VOILE STOLE
100% CASHMERE, 2 EXTRAFINE PLY
A77 - **£380**

01 05 14 29 34 38 42 46



CASHMERE VOILE STOLE
100% CASHMERE,
2 EXTRAFINE PLY
A12 - **£195**
P. 38 AND 103

01 02 05 07 11 12 14 18 19 20
21 23 24 27 29 30 33 34 37 38
41 42 44 46



TARTAN WEAVE STOLE
80% WOOL 20% CASHMERE,
2 EXTRAFINE PLY
A772 - **£210**
P. 77

04

PRINTED STOLE



HARLEQUIN PRINT STOLE
100% CASHMERE,
2 EXTRAFINE PLY
A758 - **£310**

09 19



MOSAIC PRINT STOLE
100% CASHMERE,
2 EXTRAFINE PLY
A759 - **£310**



MINI SCALES PRINT STOLE
100% CASHMERE,
2 EXTRAFINE PLY
A760 - **£310**

09 26



IRREGULAR STRIPES PRINT STOLE
100% CASHMERE,
2 EXTRAFINE PLY
A768 - **£310**

01



DENIM PATCHWORK PRINT STOLE
100% CASHMERE,
2 EXTRAFINE PLY
A769 - **£350**
P. 69

27



TARTAN PRINT FRINGED STOLE
100% CASHMERE,
2 EXTRAFINE PLY
A770 - **£350**

36



TARTAN PATCHWORK PRINT STOLE
100% CASHMERE,
2 EXTRAFINE PLY
A771 - **£350**

33



MOSAIC PRINT STOLE
100% CASHMERE,
2 EXTRAFINE PLY
A782 - **£310**

39



HERRINGBONE PRINT STOLE
100% CASHMERE,
2 EXTRAFINE PLY
A783 - **£350** - P. 2

04

ACCESSORIES

PLAIN SCARVES



RIBBED SCARF
100% CASHMERE, 10 PLY
AK413 - **£310**
P. 19, 23 AND 61

04 25 34 38 44



CLASSIC SCARF
100% CASHMERE
A18 - **£150**
P. 2, 26, 53, 56, 80 AND 101

01 02 07 11 13 14 16 18 20 21
23 25 27 29 30 32 33 34 37 38
40 41 42 45 46



DOUBLE-FACED SCARF
100% CASHMERE
A2 - **£195**
P. 101

01 05 11 13 34 45



MAXI TARTAN FRINGED SCARF
100% CASHMERE
A794 - **£210**

27



GIANT PATCHWORK SCARF
55% WOOL 23% CASHMERE
22% COTTON, 4 PLY
AK463 - **£520**
P. 32

33



COLOUR BLOCK SCARF
85% CASHMERE 10% WOOL
5% COTTON, 4 PLY
AK490 - **£530**
P. 38

33



CASHMERE VOILE SCARF
100% CASHMERE,
2 EXTRAFINE PLY
A20 - **£140**

01 02 07 11 18 20 21 23 24
27 29 33 34 37 38 41 44 46



SCARF HOOD WITH POCKET
100% CASHMERE, 6 PLY
AK469 - **£410**
P. 5 AND 73

29 46

PLAIN SQUARE SCARVES



PRINCE OF WALES CHECK FRINGED SQUARE SCARF
100% CASHMERE
A790 - **£330**

4 2



FRINGED SQUARE SCARF
100% CASHMERE,
2 EXTRAFINE PLY
A792 - **£280**

01 11 34 46



MINI FRINGED SQUARE SCARF
100% CASHMERE,
2 EXTRAFINE PLY
A793 - **£110**
P. 95

01 12 29 42 46

LES SOIERIES DU MÉKONG



VASARELY SQUARE SCARF
100% SILK
A799 - **£195**
P. 52-53 AND 67

01 40



HARMONY STOLE
25% SILK 75% CASHMERE
A800 - **£290**

02 27



TARTAN STOLE
30% SILK 70% CASHMERE
A801 - **£370**
P. 5 AND 45

38

ACCESSORIES

PRINTED SQUARE SCARVES



ARTICHOKE PRINT SQUARE SCARF
100% CASHMERE,
2 EXTRAFINE PLY
A761 - £320
P. 33

19 21 30



ARTICHOKE PATCHWORK PRINT SQUARE SCARF
100% CASHMERE,
2 EXTRAFINE PLY
A762 - £320

04 19



ARTICHOQUES PRINT SQUARE SCARF
100% CASHMERE,
2 EXTRAFINE PLY
A764 - £320
P. 107

05 19



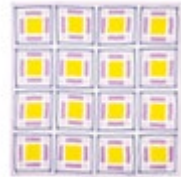
GIANT CIRCLES PRINT SQUARE SCARF
100% CASHMERE,
2 EXTRAFINE PLY
A763 - £320

01



ECLIPSE PRINT SQUARE SCARF
100% CASHMERE,
2 EXTRAFINE PLY
A765 - £320

21 30



CERAMIC PRINT SQUARE SCARF
100% CASHMERE,
2 EXTRAFINE PLY
A766 - £320

30



NEO TARTAN PRINT SQUARE SCARF
100% CASHMERE,
2 EXTRAFINE PLY
A773 - £320
P. 105

27



DENIM MOSAIC PRINT SQUARE SCARF
100% CASHMERE,
2 EXTRAFINE PLY
A774 - £320

11 32



ABSTRACT PRINT SQUARE SCARF
100% CASHMERE,
2 EXTRAFINE PLY
A775 - £320

13



ABSTRACT GEOMETRY PRINT SQUARE SCARF
100% CASHMERE,
2 EXTRAFINE PLY
A777 - £320



WOVEN LINES PRINT SQUARE SCARF
100% CASHMERE,
2 EXTRAFINE PLY
A785 - £320
P. 64

29



CHECKED PRINT SQUARE SCARF
100% CASHMERE,
2 EXTRAFINE PLY
A778 - £330

27



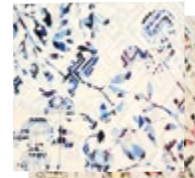
TWO-TONE FLOWERS PRINT SQUARE SCARF
100% CASHMERE,
2 EXTRAFINE PLY
A779 - £320

02



FLOWER AND LEOPARD PRINT SQUARE SCARF
100% CASHMERE,
2 EXTRAFINE PLY
A780 - £320

13



BIRDS AND FLOWERS PRINT SQUARE SCARF
100% CASHMERE,
2 EXTRAFINE PLY
A789 - £320

01 02



LEOPARD PRINT SQUARE SCARF
100% CASHMERE,
2 EXTRAFINE PLY
A786 - £320

18



FAWNS PRINT SQUARE SCARF
100% CASHMERE,
2 EXTRAFINE PLY
A788 - £320

40



TARTAN PRINT SQUARE SCARF
100% CASHMERE,
2 EXTRAFINE PLY
A784 - £330
P. 57

39



CONTRASTING SELVEDGE PRINT SQUARE SCARF
100% CASHMERE,
2 EXTRAFINE PLY
A776 - £330

32

ACCESSORIES

HATS



RIBBED LOOSE HAT
100% CASHMERE, 10 PLY
AK412 - £150
P. 2, 30, 54, 67 AND BACK COVER

01 04 13 29 34 38 42 46



RIBBED HAT
100% CASHMERE, 4 PLY
AK220 - £115
P. 17, 54 AND 56

02 24 34 41 46



DOUBLE-FACED DIP-DYE HAT
100% CASHMERE, 6 PLY
AK493 - £130

34



DOUBLE-FACED HAT
100% CASHMERE, 5 PLY
AK188 - £115

01 02 05 24 34 40 44 46



TWO-TONE DOUBLE-FACED HAT
100% CASHMERE, 5 PLY
AK244 - £115

0 2 5 8 4 2 4 4 5



FAIR ISLE JACQUARD HAT
100% CASHMERE, 4 PLY
AK464 - £120

02 34



CLASSIC HAT
100% CASHMERE, 4 PLY
AK8 - £90
P. 24, 26 AND 61

01 04 07 09 12 14 20 21 25 29 30 32 34 37 41 44 45 46



SAILOR HAT
50% CASHMERE 50% WOOL,
4 PLY
AK465 - £90
P. 13, 15, 27, 68, 69 AND 77

07 34 46

SNOODS



FITTED RIBBED SNOOD
100% CASHMERE, 12 PLY
AK429 - £95
P. 9, 17, 18, 22, 40, 48, 54, 64, 80
AND 106

01 02 04 07 08 09 11 12 13 18 19 21 25 29 31 32 34 35 37 41 45 46



RIBBED SNOOD
100% CASHMERE, 4 PLY
AK320 - £190
P. 24, 28, 29, 40 AND 61

04 07 13 16 18 20 23 24 27 33 38 40 41 44 46



SNOOD
100% CASHMERE, 4 PLY
AK180 - £220

01 05 25 34 42 46



EXTRAFINE SNOOD
70% CASHMERE 30% SILK,
2 EXTRAFINE PLY
AK478 - £95

34

HOODS



SNOOD WITH DRAWSTRINGS
100% CASHMERE, 10 PLY
AK477 - £190
P. 23, 55 AND 78

02 34



HOOD
100% CASHMERE, 6 PLY
AK333 - £110

07 31 34 38 46



EXTRAFINE SNOOD
70% CASHMERE 30% SILK,
2 EXTRAFINE PLY
AK479 - £90

34



BERET HAT
100% CASHMERE, 12 PLY
AK482 - £95

14 33 40 46

ACCESSORIES

HEADBAND



RIBBED HEADBAND
100% CASHMERE, 12 PLY
AK480 - **£80**
P. 5 AND 72

01 05 38 46



ROARING TWENTIES HEADBAND
100% CASHMERE, 6 PLY
AK154 - **£70**

01 02 14 18 24 34 41 44 46



FANCY RIB HEADBAND
100% CASHMERE, 4 PLY
AK483 - **£70**

02 15 25 34

MITTENS



MITTENS
100% CASHMERE, 4 PLY
AK303 - **£90**

02 05 11 14 34 40 42 45 46



LONG RIBBED MITTENS
100% CASHMERE, 2 PLY
AK331 - **£110**

07 16 38 46



MITTENS WITH FLAP
100% CASHMERE, 2 PLY
AK473 - **£110**

04 34 46

GLOVES



MEN GLOVES
100% CASHMERE, 4 PLY
AK7HN - **£90**

04 08 34 42 45 46



WOMEN GLOVES
100% CASHMERE, 4 PLY
AK7N - **£90**
P. 67

01 02 05 07 11 13 16 18 20 21
24 25 31 33 34 38 40 41 44 46



LONG GLOVES
100% CASHMERE, 2 PLY
AK82 - **£110**

02 14 44 46

SOCKS



RIBBED LONG SOCKS
96% CASHMERE 4% ELASTANE,
4 PLY
AK468 - **£140**
P. 23, 26, 67 AND 74

41 46



LONG SOCKS
90% CASHMERE
10% ELASTHANE, 2 PLY
AK166 - **£90**
P. 24

01 05 18 20 24 31
34 40 41 42 46



POINTELLE SOCKS
94% CASHMERE
6% ELASTANE, 2 PLY
AK166 - **£140**
P. 66 AND 81

01



SHORT SOCKS
87% CASHMERE 13% ELASTANE,
2 PLY
AK165 - **£75**
AK495 - **£140**
P. 14 AND 63

02 04 08 21 25 27
32 34 38 41 44 46

LEGWARMERS



RIBBED LEGWARMERS
100% CASHMERE, 4 PLY
AK484 - **£140**

01 04 40 46

THE BABY



BABY HOODED CARDIGAN
100% CASHMERE, 8 PLY
B77 - **£210**
P. 111

01 41



BABY CARDIGAN
100% CASHMERE, 2 PLY
B91 - **£110**
P. 111

01 17 41



BABY TROUSERS
100% CASHMERE, 2 PLY
B149 - **£90**
P. 111

01 41



KNITTED BLANKET
100% CASHMERE, 8 PLY
B28 - **£245**
P. 111

01 17 22 41



NEWBORN BEANIE
100% CASHMERE, 4 PLY
B14N - **£55**
P. 111

01 17 22 41



BABY PERUVIAN HAT
100% CASHMERE, 6 PLY
B139 - **£80**

01 41



BABY MITTENS
100% CASHMERE, 2 PLY
B31 - **£60**

01 17 22 41



BABY SOCKS
100% CASHMERE, 4 PLY
B20 - **£60**

01 17 22 41

THE CHILD



CHILD TURTLENECK PULLOVER
50% CASHMERE 50% WOOL, 2 PLY
B98 - **£130**

02 34 43



CHILD ROUND NECK PULLOVER
100% CASHMERE, 2 PLY
B160 - **£160**

34



CHILD SWEATSHIRT
50% CASHMERE 50% WOOL, 2 PLY
B95 - **£120**
P. 108 AND 109

02 11 27 34



CHILD HOODIE
100% CASHMERE, 2 PLY
B116 - **£210**

34 41



CHILD ZIP-UP HOODIE
100% CASHMERE, 2 PLY
B53 - **£210**
P. 108 AND 109

02 12 24 34 41



CHILD SNOOD
100% CASHMERE, 8 PLY
B151 - **£90**

11 24 27 28 34



CHILD HOOD
100% CASHMERE, 2 PLY
B09 - **£85**

17 34 41 43



CHILD HAT
100% CASHMERE, 4 PLY
B14 - **£70**
P. 108 AND 109

11 24 27 28 34



CHILD GLOVES
100% CASHMERE, 4 PLY
B61 - **£60**

11 24 34

CASHMERE CARE



CEDAR BALL
REF. MKBC01 - £5



CASHMERE COMB
REF. MKPE01 - £9



WASHBAG
REF. MKPL01 - £7



FLEUR-DE-LIS SHAMPOO
REF. MKSH03 - £20



ECODETERGENT
ORGANIC



SIZE GUIDE



PLEASE USE THE QR CODE
TO LOAD OUR BOMPARD SIZE GUIDE

MAIL ORDER

By telephone: + 33 (0)1 40 12 00 40

By post: ERIC BOMPARD S.A.
Mail Order
22, Rue Louis Blanc
93585 Saint-Ouen Cedex - France

ONLINE STORE

Find the full collection at
www.eric-bompard.com

FOLLOW US ON SOCIAL MEDIA



ERIC
BOMPARD
PARIS



COLLECTION LOOKBOOK

AUTUMN WINTER 2023-2024



WOMEN'S SIZES

MODEL	NAME	LENGTH IN CM						SHOULDER WIDTH IN CM						CHEST WIDTH IN CM						SLEEVE LENGTH IN CM					
		XS	S	M	L	XL	XXL	XS	S	M	L	XL	XXL	XS	S	M	L	XL	XXL	XS	S	M	L	XL	XXL
CS204	DÉSIGNATION EN		69	70	71	72			41	43	45	47			51	54	57	60			59	59,5	60	60,5	
CS205	LOOSE SHIRT		64	65	66	67			39	41	43	45			46,5	49,5	52,5	55,5			59	59,5	60	60,5	
CS206	STRAIGHT SHIRT WITH POCKET		60,5	61,5	62,5				44	46	48				54	57	60				22	23	24		
CS207	LOOSE SHORT-SLEEVED SHIRT		62	64	66	68			40	42	44	46			47	50	53	56			59,5	60,5	61,5	62,5	
MO2N	CLASSIC CARDIGAN		63	65	67	69	71		38,5	40,5	42,5	44,5	46,5		47	50	53	56	59		58	59	60	61	62
MO3N	CLASSIC ROUND NECK PULLOVER		57	58	60	62	64		33	35	37	39	41		43	46	49	52	55		59	60	61	62	63
MO7	CLASSIC TURTLENECK PULLOVER	57,5	59,5	61,5	63,5	65,5	67,5	31	33	35	37	39	41	39,5	42,5	45,5	48,5	51,5	54,5	59	60	61	62	63	64
MO9N	CLASSIC CARDIGAN		58	59	61	63	65		33	35	37	39	41		42	45	48	51	54		59	60	61	62	63
MO14N	CLASSIC V-NECK PULLOVER		61,5	63,5	65,5	67,5	69,5		31,5	33,5	35,5	37,5	39,5		42	45	48	51	54		60	61	62	63	64
MO15N	SHORT-SLEEVED ROUND NECK PULLOVER		56,5	58,5	60,5	62,5	64,5		33	35	37	39	41		42	45	48	51	54		25	25,5	26	26,5	27
MO253	FITTED TURTLENECK PULLOVER		58	60	62	64			32	34	36	38			41	44	47	50			60	61	62	63	
MO674N	EXTRAFINE V-NECK PULLOVER		58	60	62	64			33,5	35,5	37,5	39,5			43,5	46,5	49,5	52,5			59	60	61	62	
MO812N	EXTRAFINE VEST TOP		58,5	60,5	62,5	64,5			27	29	31	33			37,5	40,5	43,5	46,5							
MO820	TURTLENECK PULLOVER		59,5	61,5	63,5	65,5			34	36	38	40			41,5	44,5	47,5	50,5			59	60	61	62	
MO940N	EXTRAFINE TURTLENECK PULLOVER		58,5	60,5	62,5	64,5			33	35	37	39			39,5	42,5	45,5	48,5			60	61	62	63	
MO1346N	ZIPPED HOODIE		57,5	59,5	61,5	63,5	65,5		33	35	37	39	41		43	46	49	52	55		61	62	63	64	65
MO1921	OVERSIZED 3/4-SLEEVED V-NECK PULLOVER		55	56	60	64	68		77	80	83	86	89		76	79	82	85	88		14	14	14	15	15
MO2241N	EXTRAFINE ROUND NECK PULLOVER		57	58	60	62			35	37	39	41			44,5	47,5	50,5	53,5			59	60	61	62	
MO2243	EXTRAFINE CARDIGAN		55	57	59	61	63		34,5	36,5	38,5	40,5	42,5		40	43	46	49	52		60	61	62	63	64
MO2407	SEAMLESS EXTRAFINE ROLL-NECK		60,5	62,5	64,5	66,5									26	29	32	35			74	75	76	77	
MO2409	SEAMLESS EXTRAFINE ROUND NECK PULLOVER		61	63	65	67	69								26	29	32	35	38		72	73	74	75	76
MO2828	EXTRAFINE V-NECK PULLOVER WITH PUFF SLEEVES		55	56	58	60			35	37	39	41			40,5	43,5	46,5	49,5			24,5	25	25,5	26	
MO2853	EXTRAFINE BOAT NECK PULLOVER		54,5	56,5	58,5	60,5			35	37	39	41			45	36	39	42			59	60	61	62	
MO2856	SLEEVELESS V-NECK PULLOVER		55,5	57,5	59,5	61,5			35	37	39	41			49	37	40	43							
MO2857	POINTELLE LINES ROUND NECK PULLOVER		55	57	59	61									47	50	53	56			65,5	66,5	67,5	68,5	
MO2897	SHORT-SLEEVED LONG DRESS		116	117	118				33,2	35,2	37,2				37,5	40,5	43,5				26	26,5	27		
MO2899	ROUND NECK PULLOVER		53	54	56	58			35	37	39	41			41,5	44,5	47,5	50,5			61	62	63	64	
MO2900	LOOSE ROUND NECK PULLOVER		57	58	60	62	64		34	36	38	40	42		50,5	53,5	56,5	59,5	62,5		60	61	62	63	64
MO2934	STRAIGHT V-NECK PULLOVER		57	59	61	63			35	37	39	41			43	46	49	52			57	58	59	60	
MO2936	LOOSE ROUND NECK PULLOVER		62	64	66	68	69		42	44	46	48	50		49	52	55	58	61		51,5	52,5	53,5	54,5	55,5
MO2964	LOOSE HIGH NECK PULLOVER		60	62	64	66	68		52	54	56	58	60		55	58	61	64	67		46	47	48	49	50
MO2966N	ROUND NECK T-SHIRT		57	59	61	63			34	36	38	40			41	44	47	50			18	18,5	19	19,5	
MO2975	SLEEVELESS BUTTONED PULLOVER		58,5	60,5	62,5	64,5			37	39	41	43			49,5	52,5	55,5	58,5							
MO2994	HIGH NECK PULLOVER WITH GUERNSEY DETAILS		59,5	61,5	63,5	65,5			36	38	40	42			53,5	56,5	59,5	62,5			60,5	61,5	62,5	63,5	
MO3113	RAGLAN-SLEEVED CARDIGAN		52,5	53,5	55,5	57,5									41	44	47	50			65,5	67	68,5	70	
MO3114	RAGLAN-SLEEVED CARDIGAN		48	49,5	51,5	53,5									44	47	50	53			64,5	66	67,5	69	
MO3115	LOOSE CARDIGAN WITH POCKETS		70	71	72	73			37	39	41	43			53	56	59	62			60	61	62	63	
MO3156	SLEEVELESS GRANDAD-STYLE PULLOVER		65	67	69	71			38,5	40,5	42,5	44,5			52,5	55,5	58,5	61,5							

WOMEN'S SIZES

MODEL	NAME	LENGTH IN CM						SHOULDER WIDTH IN CM						CHEST WIDTH IN CM						SLEEVE LENGTH IN CM					
		XS	S	M	L	XL	XXL	XS	S	M	L	XL	XXL	XS	S	M	L	XL	XXL	XS	S	M	L	XL	XXL
MO3171	FANCY RIB TURTLENECK PULLOVER	58,5	60,5	62,5	64,5	66,5							58	60	62,5	64,5	67			61	62	63	65	67	
MO3222	OVERSIZED SLEEVELESS V-NECK PULLOVER	78						71						73											
MO3256	RIBBED HIGH NECK PULLOVER		64	66	68	70			45,5	48,5	50,5	52,5			52,5	55,5	57,5	59,5			54	55	56	57	
MO3421	3/4-SLEEVE V-NECK PULLOVER		50,5	51,5	53,5	55,5			37	39	41	43			43	46	49	52			51	52	53	54	
MO3436	COSY JACKET		72	74	75				38	40	42				48	51	54				56,5	57,5	58,5		
MO3437	PLAIN KNIT CARDIGAN		57	59	61	63			31	33	35	36,5			39,5	42	44,5	47			59	60	61	62	
MO3439	TURTLENECK PULLOVER WITH FANCY STITCHING		55	56	58	60			35,5	37,5	39,5	41,5			41,5	44,5	47,5	50,5			57,5	58,5	59,5	60,5	
MO3443	LOOSE ROUND NECK T-SHIRT	63	64	65	66	67		38	40	42	44	46		46,5	49,5	52,5	55,5	58,5		22	22,5	23	23,5	24	
MO3444	CASHMERE AND LINEN POINTELLE ROUND NECK PULLOVER	63	64	65	66	67		38	40	42	44	46		46,5	49,5	52,5	55,5	58,5		22	22,5	23	23,5	24	
MO3445	EXTRAFINE PRINTED ROUND NECK PULLOVER		56	57	59	61			35	37	39	41			39	42	45	48			59	60	61	62	
MO3447	RIBBED CARDIGAN		65	67	69				41	43	45				54	57	60				59	60	61		
MO3448	POINTELLE V-NECK PULLOVER		57	58,5	60	61,5			30	32	34	36			55,5	58,5	61,5	64,5			58,5	60	61,5	61,5	
MO3449	POINTELLE ROUND NECK PULLOVER		50,5	52	53,5	55			32	34	36	38			39	42	45	48			24	24,5	25	25,5	
MO3450	ARTICHOKE PRINT T-SHIRT		64	65	66				40	42	44				49,5	52,5	55,5				22,5	23	23,5		
MO3451	CERAMIC PRINT BOAT NECK PULLOVER		54	56	58				34,5	36,5	38,5				43	46	49				47	48	49		
MO3452	CERAMIC PRINT VEST TOP		55	57	59	60,5			32	34	36	37,5			35,5	38	40,5	43							
MO3453	FANCY CASHMERE AND SILK POLO SHIRT		55	57	59				53	55	57				52	55	58				19	19,5	20		
MO3454	BELTED SLEEVELESS COSY JACKET		58,5	60,5	62,5	64,5			37	39	41	43			46,5	49,5	52,5	55,5							
MO3455	SEAMLESS EXTRAFINE BALLERINA NECKLINE PULLOVER		56	58	60	61,5			24	26	28	29,5			29,5	32	34,5	37			66	67	68	69	
MO3456	COLOUR BLOCK POINTELLE ROUND NECK PULLOVER		50	51	53				34,5	36,5	38,5				40,5	43,5	46,5				54	55	56		
MO3459	LOOSE HOODIE		49,5	50,5	52,5				51	54	56				51	54	56				47,5	48,5	49,5		
MO3460	LINEN AND SILK EXTRAFINE POLO SHIRT		51	52	54				42,5	44,5	46,5				43	46	49								
MO3461	ECLIPSE V-NECK PULLOVER		60,5	62,5	64,5				53	55	57				56	59	61				50	51	52		
MO3462	PLAIN KNIT CARDIGAN		48	49	51				30,5	32,5	34				41,5	44	46,5				58	59	60		
MO3463	PLAIN KNIT HIGH NECK VEST TOP		49,5	50,5	52,5	54,5			24,5	25,5	26,5	27,5			30	32,5	35	37,5							
MO3464	CABLE OVERSIZED CARDIGAN		45,5	46,5	48,5				62	65	67				60	63	65				45,5	46	47		
MO3465	MOSAIC PRINT T-SHIRT		57	59	61	63			34,5	36,5	38,5	40,5			44,5	47,5	50,5	53,5			17,5	18	18,5	19	
MO3467	MILANO JACKET WITH POCKETS		70	72	74				35	37	39				49	52	55				58,5	59,5	60,5		
MO3469	CABLES SLEEVELESS ROUND NECK PULLOVER		57	59	61				36,5	38,5	40,5				50,5	53,5	56,5								
MO3470	POINTELLE CARDIGAN		48,5	50	51,5	53			33	35	37	39			40	43	46	49			59,5	61	62,5	62,5	
MO3471	PLAIN KNIT BUTTONED HIGH NECK PULLOVER		56	58	60				29,5	31,5	33				35,5	38	40,5				41,5	42,5	43,5		
MO3472	CABLES ROUND NECK PULLOVER		50	51	53	55			32	34	36	38			38	41	44	47			59	60	61	62	
MO3473	TEXTURED STRIPED ROUND NECK PULLOVER	52	53	54	56				31,5	33,5	35,5	37,5			39	42	45	48			58	59	60	61	
MO3474	CABLES V-NECK PULLOVER		60	62	64										55,5	58,5	61,5				64	65,5	67		
MO3475	BLAZER WITH POCKETS		59,5	61,5	63,5				33,5	35,5	37,5				43	46	49				56,5	57,5	58,5		
MO3476	SLEEVELESS POLO SHIRT WITH TOPSTITCHED MOTIF		66	67	69				39	41	43				51,5	54,5	57,5								
MO3477	LOOSE DRESS WITH TOPSTITCHED MOTIF		109,5	111,5	112,5				15	15	15				47	50	53				71	72,5	74		

WOMEN'S SIZES

MODEL	NAME	LENGTH IN CM						SHOULDER WIDTH IN CM						CHEST WIDTH IN CM						SLEEVE LENGTH IN CM					
		XS	S	M	L	XL	XXL	XS	S	M	L	XL	XXL	XS	S	M	L	XL	XXL	XS	S	M	L	XL	XXL
MO3478	POLO SHIRT WITH TOPSTITCHED MOTIF		58	60	62				39,5	41,5	43,5				51	54	57				52,5	53,5	54,5		
MO3479	TEXTURED STRIPED POLO COLLAR DRESS		115	117	119				34	36	38				40,5	43	45,5				26	27	28		
MO3480	EXTRAFINE PRINTED ROUND NECK PULLOVER		55	57	59				35	37	39				38,5	41,5	44,5				59	60	61		
MO3481	HERRINGBONE AND POINTELLE V-NECK PULLOVER		55	56	58	60			35	37	39	41			45,5	48,5	51,5	54,5			59,5	60,5	61,5	62,5	
MO3482	LOOSE V-NECK PULLOVER		55,5	56	58				32	34	36				51	54	57				65,5	67	68,5		
MO3483	MINI HERRINGBONE V-NECK PULLOVER		54,5	55,5	57,5	59,5			34	36	38	40			44,5	47,5	50,5	53,5			60	61	62	63	
MO3484	ROUND NECK PULLOVER WITH PUFF SLEEVES		55	56	58				30,5	32,5	34,5				44,5	47,5	50,5				60	61	62		
MO3485	SLANTED RIB ROUND NECK PULLOVER		55	56	58				36	38	40				43	46	49				58,5	59,5	60,5		
MO3486	FANCY STITCH SLEEVELESS V-NECK PULLOVER		55,5	57,5	59,5	61,5			37	39	41	43			48,5	51,5	54,5	57,5							
MO3487	FANCY RIB HIGH NECK PULLOVER		56	57	59	61			12	12	13	13			38,5	41,5	44,5	47,5			68,5	70	71,5	73	
MO3488	CABLE CARDIGAN		50	51	53	55									43,5	46,5	49,5	52,5			65,5	67	68	69	
MO3489	JACKET WITH SUEDE EFFECT TRIMS		55	56	58				16	16	17				53	56	59				69,5	71	72,5		
MO3490	HIGH NECK LONG DRESS		110	112	113	114									36	39	42	45			66	67,5	69	70,5	
MO3492	SLEEVELESS CARDIGAN WITH POCKETS		69	71	72				41,5	43,5	45,5				54	57	60								
MO3493	MARL ROUND NECK PULLOVER		55	56	58	60			28,5	30,5	32,5	34,5			47,5	50,5	53,5	56,5			68,5	70	71,5	73	
MO3494	DOUBLE-FACED QUILTED TEDDY JACKET		60	62	63				46	48	50				48,5	51,5	54,5				56,5	57,5	58,5		
MO3495	COLOUR BLOCK SLEEVELESS V-NECK PULLOVER		49	50	52	54			31	33	35	37			41	44	47	50							
MO3496	COLOUR BLOCK ROUND NECK PULLOVER		57	58	60	62			17,5	17,5	18,5	18,5			52	55	58	61			66	67,5	69	70,5	
MO3497	ZIP-UP JACKET WITH DENIM INSERTS		52	53	55	57			34	36	38	40			45	48	51	54			57,5	58,5	59,5	60,5	
MO3498	ROUND NECK PULLOVER WITH DENIM INSERTS	52	53	54	56	58		34	36	38	40	42		40	43	46	49	52		58,5	59,5	60,5	61,5	62,5	
MO3499	ROUND NECK PULLOVER WITH SUEDE EFFECT INSERTS		53	54	56				37	39	41				44	47	50				60,5	61,5	62,5		
MO3500	PATCHWORK ROUND NECK PULLOVER		50	51	55				61	66,5	68,5				61	66,5	68,5				46	45	46		
MO3501	REVERSIBLE TECHNICAL JACKET		56	58	60				33,5	35,5	37,5				42,5	45,5	48,5								
MO3502	CHECKED PRINT ROUND NECK PULLOVER		53	54	56	58			33,5	35,5	37,5	39,5			41,5	44,5	47,5	50,5			59	60	61	62	
MO3503	CABLE DETAIL ROUND NECK PULLOVER		56	57	59	61									44,5	47,5	50,5	53,5			67	68,5	70	71,5	
MO3504	PATCHWORK EFFECT ROUND NECK PULLOVER		61,5	63,5	65,5				57	60	62				58	61	63				47	48	49		
MO3505	DONEGAL ROUND NECK PULLOVER		56	58	60	62			34,5	36,5	38,5	40,5			44,5	47,5	50,5	53,5			61	62	63	64	
MO3506	OVERSIZE TURTLENECK PULLOVER		67	69	70				57,5	59,5	61,5				60,5	63,5	66,5				53	54	55		
MO3507	TARTAN PRINT ROUND NECK PULLOVER		58	60	62				51,5	54,5	56,5				56	59	61				49	50	51		
MO3508	HOODIE WITH DENIM INSERTS		55	56	58				52	54	56				57,5	60,5	63,5				56	57	58		
MO3509	CABLES HIGH NECK PULLOVER		50	51	53	55			36,5	38,5	40,5	42,5			46	49	52	55			57	58	59	60	
MO3510	ABSTRACT PRINT V-NECK PULLOVER		60	62	64				53	56	58				53	56	58				47,5	48,5	49,5		
MO3511	HOODIE WITH SUEDE EFFECT INSERTS		55	56	58				52	54	56				57,5	60,5	63,5				56	57	58		
MO3512	V-NECK PULLOVER WITH GUERNSEY DETAIL		56	57	59				54	57	59				54	57	59				48	49	50		
MO3513	DRESS WITH GEOMETRIC SLEEVES		86	88	89				35	37	39				49	52	55				60	61	62		
MO3515	ABSTRACT PRINT ROUND NECK PULLOVER		57	59	61				52	55	57				52	55	57				49	50	51		
MO3517	RAGLAN-SLEEVED ROUND NECK PULLOVER		56	58	60	62			25	27	29	31			44	47	50	53			67,5	69	70,5	72	

WOMEN'S SIZES

MODEL	NAME	LENGTH IN CM						SHOULDER WIDTH IN CM						CHEST WIDTH IN CM						SLEEVE LENGTH IN CM					
		XS	S	M	L	XL	XXL	XS	S	M	L	XL	XXL	XS	S	M	L	XL	XXL	XS	S	M	L	XL	XXL
MO3518	RIBBED ROUND NECK PULLOVER		55	57	59																67,5	69	70,5		
MO3519	HERRINGBONE HIGH NECK PULLOVER		60	62	64				53	56	58										49	50	51		
MO3520	SLIT TURTLENECK PULLOVER		49	50	52																63,5	65	66,5		
MO3522	MOSAIC PRINT V-NECK PULLOVER		56	57	59	61			34,5	36,5	38,5	40,5									59	60	61	62	
MO3523	CHEQUERBOARD CABLES ROUND NECK PULLOVER		60	62	64				53	56	58										49	50	51		
MO3524	BIRDS PRINT ROUND NECK PULLOVER		55	57	59	61			32,5	34,5	36,5	38,5									58,5	59,5	60,5	61,5	
MO3525	RAGLAN-SLEEVED TURTLENECK PULLOVER		59	61	63				34	36	38										67,5	69	71		
MO3526	TURTLENECK DRESS WITH BUTTONED SLEEVES		82,5	83,5	84,5				53	56	58										47,5	48,5	49,5		
MO3528	MINI HERRINGBONE TURTLENECK PULLOVER		56	57	59	61			35	37	39	41									59	60	61	62	
MO3529	HERRINGBONE STRIPED ROUND NECK PULLOVER		56	58	60	62			33	35	37	39									59	60	61	62	
MO3530	MAXI TARTAN JACQUARD ROUND NECK PULLOVER		56	58	60				32,5	34,5	36,5										63	64	65		
MO3531	HOUNDSTOOTH JACQUARD ROUND NECK PULLOVER		54,5	55,5	57,5				34	36	38										20	20,5	21		
MO3532	HOUNDSTOOTH JACQUARD JACKET		50	51	53				33,5	35,5	37,5										57	58	59		
MO3533	CABLES TURTLENECK PULLOVER		61	63	65				34	36	38										69,5	71	72,5		
MO3536	FANCY RIB V-NECK PULLOVER		55	56	58				33	35	37										60,5	61,5	62,5		
MO3537	TEXTURED HERRINGBONE V-NECK PULLOVER		54,5	55,5	57,5	59,5			35	37	39	41									58	59	60	61	
MO3538	RIBBED TURTLENECK PULLOVER		50	51	53				68	71	74										22,5	23,5	24,5		
MO3539	EXTRAFINE PRINTED HIGH NECK PULLOVER		56	58	60	62			32	34	36	38									60,5	61,5	62,5	63,5	
MO3540	BELTED COSY JACKET		57	59	61	63			39,5	42	44,5	47									55	56	57	58	
MO3542	CABLE HOODIE		50	51	53				51,5	54,5	56,5										47	48	49		
MO3544	HAMMER-SLEEVED TURTLENECK PULLOVER		55	56	58	60			20	21,5	23	24,5									68	69,5	71	72,5	
MO3545	SLEEVELESS QUILTED ROUND NECK		46,5	47	49				24	26	28														
MO3546	QUILTED BUTTONED JACKET		46,5	48,5	50,5				34	36	38										59	60	61		
MO3547	SLUB STRIPES ROUND NECK PULLOVER		53,4	54,5	56,5	58,5			36,5	38,5	40,5	42,5									59	60	61	62	
MO3548	SLUB STRIPES HIGH NECK PULLOVER		59	61	63				52,5	55,5	57,5										49	50	51		
MO3549	HIGH NECK PULLOVER WITH PUFF SLEEVES		54,5	56,5	58,5	60,5			33	35	37	39									70	71	72	73	
MO3551	CABLES LOOSE ROUND NECK PULLOVER		62	64	66	68			35	37	39	41									60,5	61,5	62,5	63,5	
MO3552	RIBBED TEDDY JACKET		53	54	56				34,5	36,5	38,5										57,5	58,5	59,5		
MO3553	STRIPED ROUND NECK PULLOVER		50	51	53				58	61	64										50	51	52		
MO3554	GILET WITH DETACHABLE SLEEVES		61,5	63,5	65,5				46,5	48,5	50,5										52	53	54		
MO3555	ZIP-NECK PULLOVER WITH SUEDE EFFECT DETAIL		53,5	54,5	56,5				53,5	56,5	58,5										50	51	52		
MO3556	ZIP-UP HIGH NECK PULLOVER		55	56	58				23,5	26	28,5										67,5	69,5	71,5		
MO3557	DIAMOND POINTELLE TURTLENECK PULLOVER		58	60	62				38,5	40,5	42,5										59	60	61		
MO3558	CABLES ROUND NECK PULLOVER		54	55	57	59			26	28	30	32									42,5	45,5	48,5	51,5	
MO3559	CABLES SLEEVELESS ROUND NECK PULLOVER		47	48	50				25	27	29														
MO3560	FANCY CABLE BOAT NECK PULLOVER		54	55	57	59			25,5	27,5	29,5	31,5									63	65	67	69	
MO3561	EMBROIDERED ROUND NECK PULLOVER		52	53	55	57			33	35	37	39									59	60	61	62	
MO3562	ANIMAL MOTIF ROUND NECK PULLOVER		53	54	56	58			32,5	34,5	36,5	38,5									61	62	63	64	

WOMEN'S SIZES

MODEL	NAME	LENGTH IN CM						SHOULDER WIDTH IN CM						CHEST WIDTH IN CM						SLEEVE LENGTH IN CM					
		XS	S	M	L	XL	XXL	XS	S	M	L	XL	XXL	XS	S	M	L	XL	XXL	XS	S	M	L	XL	XXL
MO3563	LOOSE V-NECK PULLOVER	58	60	62	64	66		50	53	56	59	62		53	56	59	62	65		50	50,5	51	51,5	52	
MO3564	OVERSIZED BOAT NECK PULLOVER		59	61	63				63,5	66,5	68,5				65	68	70				44,5	45,5	46		
MO3565	LOOSE TURTLENECK PULLOVER WITH HAMMER SLEEVES		61,5	63,5	64,5	65,5			45	47	49	51			55	58	61	64			68	69,5	71	72,5	
MO3566	LOOSE V-NECK PULLOVER		58,5	60,5	62,5	64,5			53,5	56,5	59,5	62,5			52	55	58	61			49,5	50	50,5	51	
MO3567	LOOSE ROUND NECK PULLOVER		60	62	64	66			53	55	57	59			56	59	61	63			48	49	50	51	
MO3568	CARDIGAN WITH POCKETS		54	55	57				59	62	64				58	61	63				47,5	48,5	48,5		
MO3569	SLEEVELESS CROPPED ROUND NECK PULLOVER		48	49	51				30	32	34				41	44	47								
MO3570	HIGH NECK PULLOVER		49	50	52				34	36	38				42	45	48				58,5	59,5	60,5		
MO3571	PLAIN KNIT V-NECK PULLOVER		56	58	60	62			27,5	29,5	31,5	33			34	36,5	39	41,5			63	64	65	66	
MO3572	PLAIN KNIT ROUND NECK PULLOVER		55	57	59	60,5			30	32	34	36			33,5	36	38,5	41			18	18,5	19	19,5	
MO3573	FITTED HIGH NECK PULLOVER		53	54	56				34,5	36,5	38,5				39	42	45				61	62	63		
MO3574	FITTED TURTLENECK PULLOVER		54	55	57				34	36	38				40	43	46				59	60	61		
MO3575	RAGLAN-SLEEVED ROUND NECK PULLOVER		55	57	59										40,5	43,5	46,5				66	67,5	69		
MO3614	SEAMLESS HIGH NECK PULLOVER		54	55	57				39	41	43				53,5	56,5	59,5				67,5	69	71		
MO3615	SEAMLESS ROUND NECK PULLOVER		50,5	51,5	53,5	55,5			32	34	36	38			43	46	49	52			65,5	67	68,5	70	
MO3618	FAIR ISLE JACQUARD ROUND NECK PULLOVER		54	55	57				34	36	38				41,5	44,5	47,5				63	64	65		
MO3620	FAIR ISLE JACQUARD TURTLENECK PULLOVER		56	58	60	62									48	51	54	57			62,5	64	65,5	67	
MO3621	STRIPED PLAIN KNIT ZIP-NECK PULLOVER		57,5	58,5	59,5	60,5									36	38,5	41	43,5			68,5	70	71,5	73	
MO3624	STRIPED HIGH NECK ZIP-UP JACKET		56	58	60				35	37	39				42,5	45,5	48,5				59	60	61		
MO3628	PLAIN KNIT POLO SHIRT		56	58	60				29	31	33				35,5	38	40,5				59	60	61		
MO3629	SEAMLESS LOOSE ROUND NECK PULLOVER		51	52	55,5				56	59	60				59,5	64	66				62,5	65	65		
MO3630	LOOSE SEAMLESS TURTLENECK PULLOVER		66	68	70				48,5	50,5	52,5				56	59	62				67,5	69	71		
MO3631	POINTELLE DETAILS CARDIGAN		55	57	59				38	40	42				53	56	59				59,5	60,5	61,5		
MT112	DOUBLE-FACED OVERSIZED COAT		87,5	89	90,5										61	64	67				74,5	75,5	75,5		
MT113	LONG DOUBLE-FACED COAT		105,5	107	108,5				44	46	48				54	57	60				55	56	56		
MT121	OVERSIZED QUILTED COAT			82	84					59	64				67,5	72,5						42	44		
MT122	HERRINGBONE DOUBLE-BREADED COAT			77	79					65	68				63	66						49	50		
MT123	BUTTONED JACKET WITH POCKETS			66	67					51	53				63	66						57	58		

WOMEN'S SIZES

SKIT, TROUSER, JEANS, LEGGINGS, CYCLING SHORTS

MODEL	NAME	LENGHT IN CM					HIP WIDTH IN CM					WAIST WIDTH IN CM				
		XS	S	M	L	XL	XS	S	M	L	XL	XS	S	M	L	XL
MO1770	SECOND SKIN LEGGINGS		95	98	101			31	33	35			33	35	37	
MO2875	LONG FLARED SKIRT		84	85	86			31	34	37			54	57	60	
MO2917	CROPPED TROUSERS WITH POCKETS		85	87	88	89		32,5	35	37,5	40		39,5	42,5	45,5	48,5
MO3172	FLARED LONG SKIRT WITH BUTTONS		83,5	84,5	85,5	85,5		31	33,5	36	38,5					
MO3182	CARROT TROUSERS WITH DARTS		95	96	96	96		35	37,5	39,5	41,5		44,5	47	49	51
MO3185	TROUSERS WITH POCKETS		110	112	112	112		32,5	35	37	39		44,5	47	49	51
MO3255	RIBBED TROUSERS		103	105	105			32,5	35	37,5			39	41,5	44	
MO3457	FLARED MILANO SKIRT		72	73	74			34,5	37,5	40,5			55	58	61	
MO3458	POINTELLE LONG SKIRT		81,5	82,5	83,5	83,5		32,5	35	37,5	40		67	70	73	76
MO3466	RIBBED CYCLING SHORTS		43	44	44,5	45		26,5	29	31,5	34		29,5	32	34,5	37
MO3468	MILANO MIDI SKIRT		70	72	72	72		34	36,5	39	41,5		44,5	47	49,5	52
MO3491	MILANO MINI SKIRT		37	38	38,5	39		33	35,5	38	40,5		42,5	45	47,5	50
MO3514	PENCIL SKIRT WITH DARTS		73,5	75,5	76	76,5		32,5	35	37,5	40		35,5	38	40,5	43
MO3516	MILANO TROUSERS WITH POCKETS		101	103	103,5			32,5	35	37,5			46,5	49	51,5	
MO3521	TARTAN JACQUARD MINI SKIRT		38	39	39,5	40		31,5	34	36,5	39		40	42,5	45	47,5
MO3527	HERRINGBONE STRIPED FLARED SKIRT		81	82	83	84		32	34,5	37	39,5		70	73	76	79
MO3535	TARTAN JACQUARD WRAPOVER SKIRT		80	82	83	84		32,5	35	37,5	40		42	45	48	51
MO3541	MARL FLARED SKIRT		78	80	80,5			33,5	36	38,5			52,5	55	57,5	

MEN'S SIZES

MODEL	NAME	LENGTH IN CM							SHOULDER WIDTH IN CM							CHEST WIDTH IN CM							SLEEVE LENGTH IN CM								
		XS	S	M	L	XL	XXL	XXXL	XS	S	M	L	XL	XXL	XXXL	XS	S	M	L	XL	XXL	XXXL	XS	S	M	L	XL	XXL	XXXL		
CS208	LOOSE DENIM SHIRT		72	74	76	78				45,5	47,5	49,5	51,5				53	56	59	62				64	65	66	67				
MO4N	CLASSIC V-NECK PULLOVER		66	68	70	72	74	76			39	41	43	45	47	49		51	54	57	60	64	68		64,5	65,5	66,5	67,5	68,5	68,5	
MO5	CLASSIC CARDIGAN		67	69	71	73	75	77			40	42	44	46	48	50		51	7	10	13	17	21		64	65	66	67	68	69	
MO6	SLEEVELESS V-NECK PULLOVER		64	66	68	70	72				39	41	43	45	47			49,5	8	11	14	18									
MO8	CLASSIC TURTLENECK PULLOVER		65	67	69	71	73				40	42	44	46	48			60	9	12	15	19			65	66	67	68	69		
MO10N	CLASSIC ROUND NECK PULLOVER		66	68	70	72	74				39	41	43	45	47			51	10	13	16	20			64,5	65,5	66,5	67,5	68,5		
MO294	TURTLENECK PULLOVER		66,5	68,5	70,5	72,5	74,5				39	41	43	45	47			49,5	14	17	20	24			65	66	67	68	69		
MO378	TWO-TONE HIGH NECK PULLOVER		66	68	70	72	74				39	41	43	45	47			50	15	18	21	25			65	66	67	68	69		
MO609	EXTRAFINE ROUND NECK PULLOVER		66	68	70	72	74				38	40	42	44	46			48,5	16	19	22	26			65	66	67	68	69		
MO610	EXTRAFINE TURTLENECK PULLOVER		66,5	68,5	70,5	72,5	74,5				38	40	42	44	46			49	17	20	23	27			65,5	66,5	67,5	68,5	69,5		
MO891	EXTRAFINE V-NECK PULLOVER		66,5	68,5	70,5	72,5	74,5				38,5	40,5	42,5	44,5	46,5			49	18	21	24	28			65	66	67	68	69		
MO1079	BUTTONED POLO SHIRT		66	68	70	72	74	76				39	41	43	45	47	49		50	19	22	25	29	67		64,5	65,5	66,5	67,5	68,5	69,5
MO1081	ZIP-NECK PULLOVER		66	68	70	72	74	76				41	43	45	47	49	51		50,5	20	23	26	30	67,5		64,5	65,5	66,5	67,5	68,5	68,5
MO1082	ZIPPED HOODIE		66	68	70	72	74				40	42	44	46	48			52	21	24	27	31			64	65	66	67	68		
MO1083	REVERSIBLE ZIP-UP JACKET		66	68	70	72	74				40	42	44	46	48			52	22	25	28	32			64	65	66	67	68		
MO1372	ZIP-NECK PULLOVER		66	68	70	72	74				39	41	43	45	47			50	24	27	30	34			65	66	67	68	69		
MO1609	ZIPPED TEDDY		67	69	71	73	75				39,5	41,5	43,5	45,5	47,5			50,5	26	29	32	36			64,5	65,5	66,5	67,5	68,5		
MO1838N	EXTRAFINE ZIP-NECK PULLOVER		66	68	70	72	74				39	41	43	45	47			53	56	59	62	66			65,5	66,5	67,5	68,5	69,5		
MO2945	MARL ZIP-NECK PULLOVER		65	67	69	71					40	42	44	46				48	28	31	34				65	66	67	68			
MO2949	ROUND NECK PULLOVER WITH SUEDE EFFECT ELBOW PATCHES		65	67	69	71	73				31	33	35	37	39			48,5	30	33	36	40			75,5	77,5	78,5	80	81,5		
MO3071N	ROUND NECK T-SHIRT		66	68	70	72	74				42	44	46	48	50			50	53	56	59	62			24	24,5	25	25,5	26		
MO3143N	DOUBLE-FACED SHIRT		71,5	73,5	75,5	77,5					39,5	41,5	43,5	45,5				54	57	60	63				65	66	67	68			
MO3201N	QUILTED SLEEVELESS JACKET		64	66	68	70					38	40	42	44				49,5	52,5	55,5	58,5										
MO3248	BUTTONED TEDDY JACKET WITH SUEDE EFFECT DETAILS		65	67	69	71	73				42	44	46	48	50			52	50	53	56	60			62,5	63,5	64,5	65,5	66,5		
MO3576	RIBBED HOODIE		64,5	66,5	68,5	70,5					50	52	54	56				54	57	60	63				75,5	76,5	77,5	78,5			
MO3578	MINI HERRINGBONE ROUND NECK PULLOVER		66	68	70	72					42	44	46	48				51	54	57	60				67	68	69	70			
MO3579	EXTRAFINE V-NECK PULLOVER WITH CONTRASTING COLLAR		65	67	69	71					39	41	43	45				50,5	53,5	56,5	59,5				64,5	65,5	66,5	67,5			
MO3580	EXTRAFINE TEXTURED CHEQUERBOARD V-NECK PULLOVER		66,5	68,5	70,5	72,5					39	41	43	45				50,5	53,5	56,5	59,5				67	68	69	70			
MO3581	CASUAL HOODIE	62	64	67	69	71					40	42	44	46	48			51	54	57	60	63			61,5	63	65	66	67		
MO3583	RIBBED HIGH NECK JACKET		65	67	69	71					41	43	45	47				51,5	54,5	57,5	60,5				63	64	65	66			
MO3584	EXTRAFINE ZIP-UP POLO SHIRT		65	67	69	71	73				41	43	45	47	49			50,5	53,5	56,5	59,5	63,5			66,5	67,5	68,5	69,5	70,5		
MO3585	ZIP-UP TEDDY JACKET WITH SUEDE EFFECT TRIMS		65	67	69	71					42	44	46	48				52	55	58	61				63	64	65	66			
MO3586	MARL ROUND NECK PULLOVER WITH ELBOW PATCHES		65	67	69	71					33	35	37	39				50	53	56	59				77	78,5	80,5	82,5			
MO3587	REVERSIBLE TECHNICAL JACKET		66	68	70	72					57,5	59,5	61,5	63,5				49,5	52,5	55,5	58,5										
MO3589	SLANTED RIB ROUND NECK PULLOVER		65	67	69	71					31	33	35	37				49	52	55	58				76,5	78	79,5	81			
MO3590	HERRINGBONE DETAIL ROUND NECK PULLOVER		65	67	69	71	73				39,5	41,5	43,5	45,5	47,5			49	52	55	58	62			65	66	67	68	69		
MO3591	ROUND NECK PULLOVER WITH SUEDE EFFECT INSERTS		65	67	69	71					39,5	41,5	43,5	45,5				49,5	52,5	55,5	58,5				65	66	67	68			

MEN'S SIZES

TROUSER, JEANS

MODEL	NAME	LENGHT IN CM					HIP WIDTH IN CM					WAIST WIDTH IN CM				
		XS	S	M	L	XL	XS	S	M	L	XL	XS	S	M	L	XL
MO3440	CASUAL TROUSERS	97,5	99	100,5	101	101,5	29,5	32	34,5	37	39,5	44,5	47	49,5	52	54,5
MO3626	CASUAL TROUSERS WITH STRIPED DETAILS	97,5	99	100,5	101	101,5	30	32,5	35	37,5	40	45	47,5	50	52,5	55

CHILDREN'S SIZES

MODEL	NAME	LENGTH IN CM						SHOULDER WIDTH IN CM						WIDTH IN CM						SLEEVE LENGTH IN CM					
		2 YEARS	4 YEARS	6 YEARS	8 YEARS	10 YEARS	12 YEARS	2 YEARS	4 YEARS	6 YEARS	8 YEARS	10 YEARS	12 YEARS	2 YEARS	4 YEARS	6 YEARS	8 YEARS	10 YEARS	12 YEARS	2 YEARS	4 YEARS	6 YEARS	8 YEARS	10 YEARS	12 YEARS
B09	HOOD	31	32	33				18,5	18,5	19															
B14	HAT	24						19																	
B53	ZIP-UP HOODIE	37	41	45	49	52	55	25	27	29	31	33	35	30	32	35	38	41	43	31	36	40	43	47	50
B61	GLOVES			18,5	18,5	19,5	19,5			6	6	6,5	6,5			8,5	8,5	9	9						
B95	SWEATSHIRT	35	39	43	47	50	53	24	26	28	30	32	34	28	30	33	36	39	42	32	37	41	44	47	49
B98	TURTLENECK PULLOVER	35	39	43	47	50	53	22	24	26	28	30	32	26	28	31	34	37	40	32	37	41	44	47	49
B116	HOODIE	34	38	42	49	49	52	12,5	12,5	13	13	13	13,5	28	30	33	36	39	41	37	42	46	49	53	56
B151	SNOOD	20						25																	
B160	ROUND NECK PULLOVER	36	40	44	48	51	54	23	25	27	29	31	33	27	29	32	35	38	40	31	36	40	43	47	49

BABIE'S SIZES

MODEL	NAME	LENGTH IN CM				SHOULDER WIDTH IN CM				WIDTH IN CM				SLEEVE LENGTH IN CM			
		3 MONTHS	6 MONTHS	12 MONTHS	18 MONTHS	3 MONTHS	6 MONTHS	12 MONTHS	18 MONTHS	3 MONTHS	6 MONTHS	12 MONTHS	18 MONTHS	3 MONTHS	6 MONTHS	12 MONTHS	18 MONTHS
B14N	BEANIE	15								15							
B20	SOCKS	9,5								10							
B28	BLANKET	85								67							
B31	MITTENS	14								6							
B77	HOODED CARDIGAN		27	29	31		25	26	27		28	29	30		21	23	25
B91	CARDIGAN		28	30	32		17	18	19		26	28	30		22	24	26
B139	PERUVIAN HAT	25								16,5							
B149	TROUSERS		34	38	43						22	23	24				

ACCESSORIES SIZES

MODEL	NAME	LENGTH IN CM	WIDTH IN CM
A1B	CLASSIC SCARF	170	35
A2	DOUBLE-FACED SCARF	170	35
A3	STOLE	210	75
A12	CASHMERE VOILE STOLE	180	85
A20	CASHMERE VOILE SCARF	155	55
A77	GIANT CASHMERE VOILE STOLE	250	120
A184	CHEVRON SELVEDGE STOLE	180	85
A270	FRINGED PONCHO	160	130
A758	HARLEQUIN PRINT STOLE	180	85
A759	MOSAIC PRINT STOLE	180	85
A760	MINI SCALES PRINT STOLE	180	85
A761	ARTICHOKE PRINT SQUARE SCARF	120	120
A762	ARTICHOKE PATCHWORK PRINT SQUARE SCARF	120	120
A763	GIANT CIRCLES PRINT SQUARE SCARF	120	120
A764	ARTICHOKES PRINT SQUARE SCARF	120	120
A765	ECLIPSE PRINT SQUARE SCARF	120	120
A766	CERAMIC PRINT SQUARE SCARF	120	120
A768	IRREGULAR STRIPES PRINT STOLE	180	85
A769	DENIM PATCHWORK PRINT STOLE	180	85
A770	TARTAN PRINT FRINGED STOLE	180	85
A771	TARTAN PATCHWORK PRINT STOLE	180	85
A772	TARTAN WEAVE STOLE	180	48
A773	NEO TARTAN PRINT SQUARE SCARF	120	120
A774	DENIM MOSAIC PRINT SQUARE SCARF	120	120
A775	ABSTRACT PRINT SQUARE SCARF	120	120
A776	CONTRASTING SELVEDGE PRINT SQUARE SCARF	120	120
A777	ABSTRACT GEOMETRY PRINT SQUARE SCARF	120	120
A778	CHECKED PRINT SQUARE SCARF	120	120
A779	TWO-TONE FLOWERS PRINT SQUARE SCARF	120	120
A780	FLOWER AND LEOPARD PRINT SQUARE SCARF	120	120
A782	MOSAIC PRINT STOLE	180	85
A783	HERRINGBONE PRINT STOLE	180	85
A784	TARTAN PRINT SQUARE SCARF	120	120
A785	WOVEN LINES PRINT SQUARE SCARF	120	120
A786	LEOPARD PRINT SQUARE SCARF	120	120
A788	FAWNS PRINT SQUARE SCARF	120	120
A789	BIRDS AND FLOWERS PRINT SQUARE SCARF	120	120
A790	PRINCE OF WALES CHECK FRINGED SQUARE SCARF	125	125
A791	TARTAN FRINGED TRIANGLE	170	85
A792	FRINGED SQUARE SCARF	120	120
A793	MINI FRINGED SQUARE SCARF	65	65

ACCESSORIES SIZES

MODEL	NAME	LENGTH IN CM		WIDTH IN CM	
A794	MAXI TARTAN FRINGED SCARF	170		35	
A799	VASARELY SQUARE SCARF	90		90	
A800	HARMONY STOLE	195		65	
A801	TARTAN STOLE	200		95	
AK7HN	MEN GLOVES	T1 : 27,5	T2 : 28,5	T1 : 9,7	T2 : 10,7
AK7N	WOMEN GLOVES	T1 : 22	T2 : 23,5	T1 : 8,5	T2 : 9,5
AK8	CLASSIC HAT	27		20	
AK57	PONCHO	64		55	
AK82	LONG GLOVES	40		7,3	
AK154	ROARING TWENTIES HEADBAND	60		13,5	
AK177	OFF-GAUGE STOLE	200		50	
AK180	SNOOD	65		65	
AK188	DOUBLE-FACED HAT	28		26	
AK220	RIBBED HAT	28		20	
AK222	LONG PONCHO	70		80	
AK244	TWO-TONE DOUBLE-FACED HAT	28		27	
AK303	MITTENS	27,5		7	
AK320	RIBBED SNOOD	57,5		28,5	
AK331	LONG RIBBED MITTENS	46		10	
AK333	HOOD	42		24	
AK461	PATCHWORK PONCHO WITH ONE SLEEVE	67,5		79	
AK462	TURTLENECK CAPE WITH ZIPS	69		32,5	
AK463	GIANT PATCHWORK SCARF	180		52	
AK464	FAIR ISLE JACQUARD HAT	19		25	
AK465	SAILOR HAT	16		25	
AK466	CABLE TURTLENECK BIB	33		36	
AK467	RIBBED HOODED BIB	38		37	
AK469	SCARF HOOD WITH POCKET	104		32	
AK472	RIBBED TURTLENECK BOLERO	31		70	
AK473	MITTENS WITH FLAP	26,5		9	
AK475	ZIP-NECK PONCHO	68		81	
AK476	TURTLENECK PONCHO	65		65	
AK477	SNOOD WITH DRAWSTRINGS	41,5		26	
AK478	EXTRAFINE SNOOD	52		24	
AK479	EXTRAFINE SNOOD	39		27	
AK480	RIBBED HEADBAND	9,5		24	
AK481	RIBBED STOLE	200		50	
AK482	BERET HAT	26		26	
AK483	FANCY RIB HEADBAND	9		25	

ACCESSORIES SIZES

MODEL	NAME	LENGTH IN CM		WIDTH IN CM	
AK484	RIBBED LEGWARMERS	52		14	
AK485	OFF-GAUGE TRIANGLE	220		85	
AK487	MITTENS WITH STRIPED DETAILS	44,5		11	
AK488	HAT WITH STRIPED DETAIL	21		24	
AK490	COLOUR BLOCK SCARF	198		60	
AK491	FAIR ISLE JACQUARD HAT	21		25	
AK492	DIP-DYE STOLE	200		50	
AK493	DOUBLE-FACED DIP-DYE HAT	28		26	
AK494	TARTAN PONCHO WITH ONE SLEEVE	79		76	

SOCKS SIZES

MODEL	NAME	LENGTH IN CM			WIDTH IN CM		
		37/39	40/42	43/45	37/39	40/42	43/45
AK165	SHORT SOCKS	21		25	22		24
AK166	LONG SOCKS	21		25	22		24
AK468	RIBBED LONG SOCKS	42	43		10,5	11	
AK495	POINTELLE SOCKS	23	24		8,5	9	

BELTS SIZES

MODEL	NAME	LENGTH IN CM		WIDTH IN CM	
		T1	T2	T1	T2
CE37	TIE BELT	115	129	2	2